

Exporting Models

You can use the export function to save your developments. The scope of the model export depends on whether you start the export at the top level of the editor, for example after calling the project tile, or in an editor on a lower level. In this way, you can export a specific app project, EPC model or form to keep the export file small. The export includes all levels including the one from which the export is started.

You can export entire projects and process apps also directly from the cockpit (BPaaS 17.3).

To save and open the code of exported models, you need a text editor on your computer, for example Windows Editor, Notepad++,



Important Note for Transporting Apps with Roles

Roles are managed centrally in the [administration](#). When transporting role-based models from one system to another (for example, from a test system to a production system), you must ensure that the roles are also imported to the relevant administration. Further information on this topic can be found in the [Administration Guide > Reusing Central Roles](#).

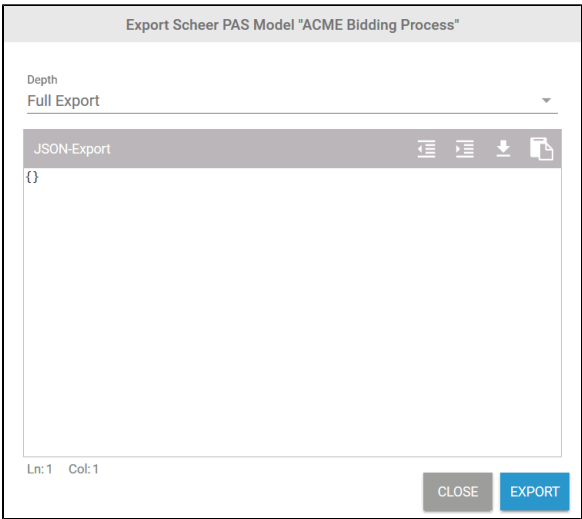
Exporting from the Cockpit

You can export entire projects and process apps directly from the cockpit.



To open the export dialog, click on the icon  in the tile menu.

In our example, Irene Adler opens the project ACME Bidding Process.



The export dialog is displayed in a separate pop-up window.

Irene opens the **Depth** drop-down list to select the depth of her export.

On this Page:

- [Exporting from the Cockpit](#)
- [Exporting from the BPaaS Editor](#)
 - [Export Options](#)

Related Pages:

- [Importing Models](#)
- [Starting BPaaS](#)
 - [The Scheer PAS Cockpit](#)
- [Working with BPaaS Editor](#)

Related Documentation:

- [Administration Guide](#)
 - [Administering Users](#)

Full Export

Current Model Only

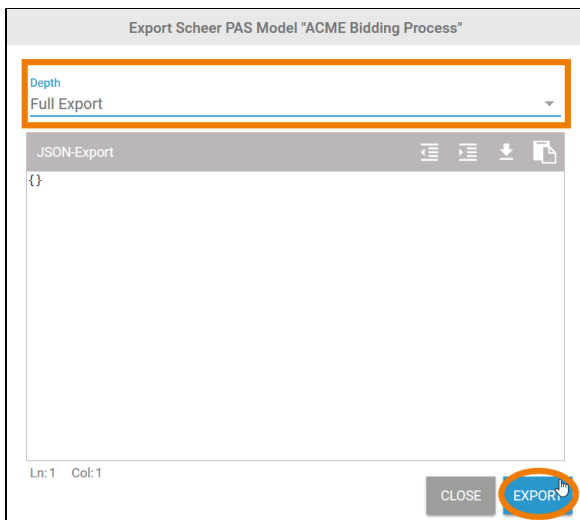


She has the choice between two options:

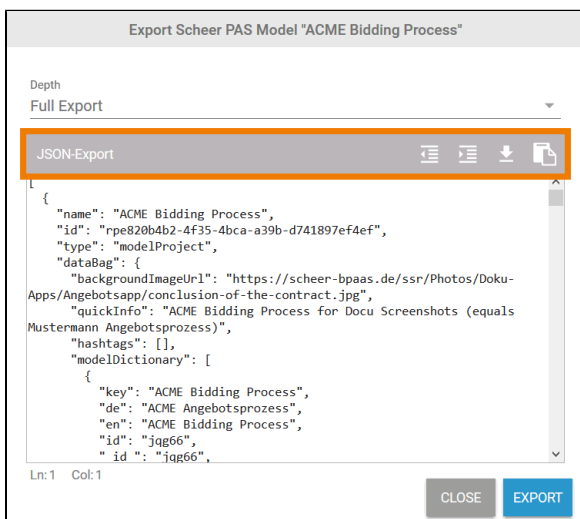
- Full Export
- Current Model Only



The differences between the available options are explained in more detail in section [Export Options](#).



Then she starts the export by clicking the **Export** button.



The code of the selected model is displayed in the editor. Ir

For the **display options** she has the choice between:

-  **Condensed Layout**
-  **Formatted Layout**

The following options are available for **saving** the export:

-  **Save Export as File**
-  **Copy to Clipboard**



The differences between the available options are explained in more detail in section [Export Options](#).

Export Scheer PAS Model "ACME Bidding Process"

Depth

Full Export

JSON-Export

```
[
{
  "name": "ACME Bidding Process",
  "id": "rpe820b4b2-4f35-4bca-a39b-d741897ef4ef",
  "type": "modelProject",
  "dataBag": {
    "backgroundImageUrl": "https://scheer-bpaas.de/ssr/Photos/Doku-Apps/Angebotsapp/conclusion-of-the-contract.jpg",
    "quickInfo": "ACME Bidding Process for Docu Screenshots (equals Mustermann Angebotsprozess)",
    "hashtags": [],
    "modelDictionary": [
      {
        "key": "ACME Bidding Process",
        "de": "ACME Angebotsprozess",
        "en": "ACME Bidding Process",
        "id": "jqg66",
        "id ": "jqg66",
```

Ln:1 Col:1

CLOSEEXPORT

The default setting is **for matted layout**. The code is displayed in readable format.

Export Scheer PAS Model "ACME Bidding Process"

Depth

Full Export

JSON-Export

```
[{"name": "ACME Bidding Process", "id": "rpe820b4b2-4f35-4bca-a39b-d741897ef4ef", "type": "modelProject", "dataBag": {"backgroundImageUrl": "https://scheer-bpaas.de/ssr/Photos/Doku-Apps/Angebotsapp/conclusion-of-the-contract.jpg", "quickInfo": "ACME Bidding Process for Docu Screenshots (equals Mustermann Angebotsprozess)", "hashtags": [], "modelDictionary": [{"key": "ACME Bidding Process", "de": "ACME Angebotsprozess", "en": "ACME Bidding Process", "id": "jqg66", "id_": "jqg66", "fr": "ACME Processus de soumission"}, {"key": "ACME Bidding Process for Docu Screenshots (equals Mustermann Angebotsprozess)", "id": "jqg67", "id_": "jqg67"}, {"key": "App Project-7kjr", "id": "jqg68", "id_": "jqg68"}, {"key": "Frame-SVET", "id": "jqg69", "id_": "jqg69"}, {"key": "Proposal Preparation", "id": "jqg70", "id_": "jqg70"}, {"key": "Main App", "id": "jqg71", "id_": "jqg71"}, {"key": "Frame-SUT0", "id": "jqg72", "id_": "jqg72"}, {"key": "Apps linked in main app", "id": "jqg73", "id_": "jqg73"}, {"key": "\\Child\\ Apps linked in Main App", "id": "jqg74", "id_": "jqg74"}, {"key": "App Project-Anbw", "id": "jqg75", "id_": "jqg75"}, {"key": "Customer"}]}
```

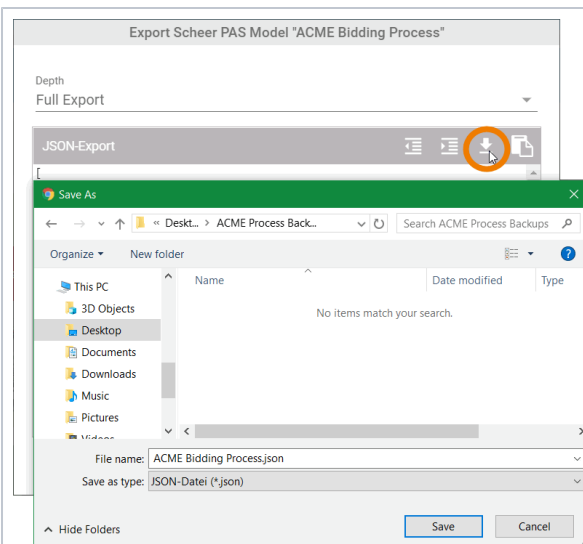
Ln:1 Col:1


CLOSE

EXPORT

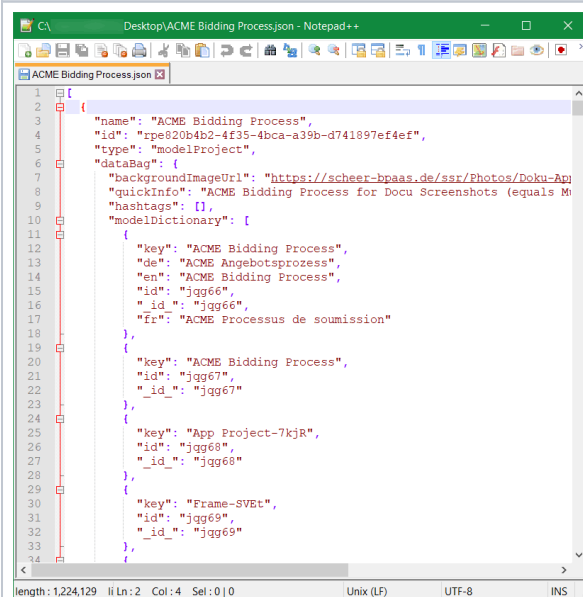
If you want to export the code in a space-saving way, select the option **Condensed Layout**. The code is displayed in a single line. For large models, several MB of memory can be saved compared to the formatted export.

i The condensed layout is mainly used by developers.





Irene wants to save the code directly as a file, so she uses the  button.

It opens the **Save As** dialog of Irene's computer and she can select the storage location.

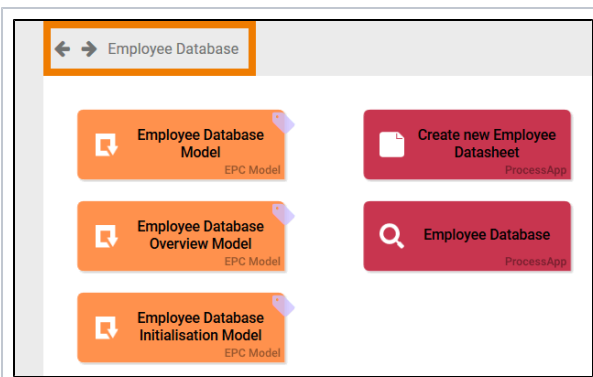
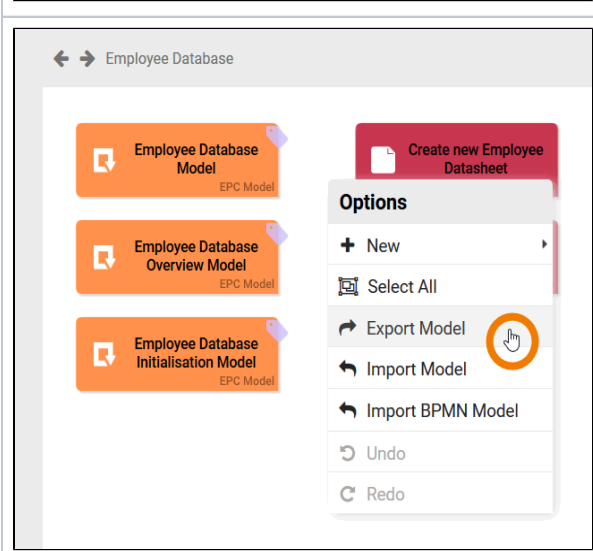
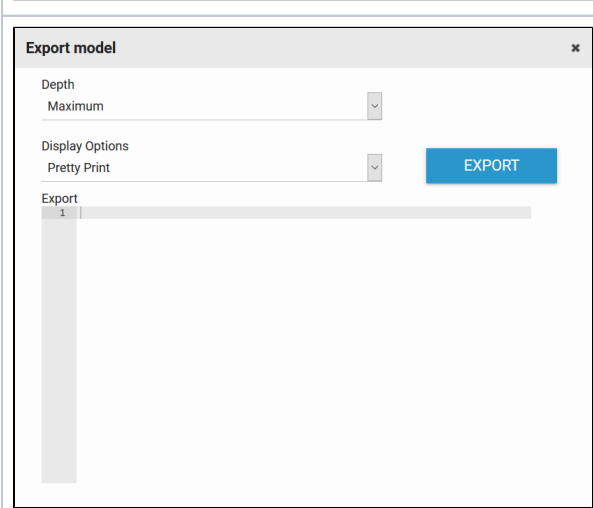
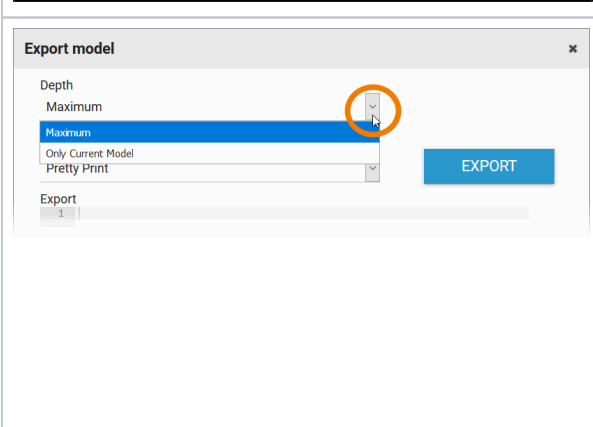


The export file is saved on Irene's computer. Now she is able to open the file with a text editor, for example Windows Editor or Notepad++.

<div><div>Export Scheer PAS Model "ACME Bidding Process"</div><div>Depth Full Export</div><div><div>JSON-Export</div><div><div><div><div></div><div></div><div></div><div></div></div><div></div></div><div><pre>[{"#customerDatabase"}, {"translations": null}], {"runInitEpcModelSearch": {"label": "Customer Database Initialization Model", "value": "Customer Database Initialization Model", "data": {"name": "Customer Database Initialization Model", "id": "42975694-939d-4bef-a27f-ce464bfff5ea", "type": "modelEpc", "hashtags": [{"#customerDatabase"}, {"translations": null}], "backgroundImageUrl": "https://scheer-bpaas.de/oauth/img/logos/Login%20Hintergrund.png", "collectionName": "AnbW", "containsInteriorObjects": true, "hashtags": [{"#customerDatabase"}], "undefined": {"data": {"name": "Customer Database Model", "label": "Customer Database Model", "name": "Customer Database Model", "value": "Customer Database Model"}, "quickInfo": "App project containing ACME's customer database.", "currentValue": null, "quickInfo": "App project containing ACME's customer database."}}, {"quickInfo": "", "meta": {"id": "fffd136c1-8ccb-4e61-969e-4cec345221e0", "version": 1, "current": true, "createdAt": 1576047657711, "createdBy": "", "changedAt": 1576047657711, "changedBy": "irene.adler"}, "deleted": false}]</pre></div><div>Ln:1 Col:1</div><div><div>CLOSE</div><div>EXPORT</div></div></div></div></div>	<p>You could also copy the content of the export editor and paste it to a text editor.</p> <ul style="list-style-type: none">• To copy the code to the clipboard, press the button .• If the code was successfully copied, the button changes briefly to another view  and the content of the export editor is highlighted. <p>You can now paste the contents of the clipboard into a document of your choice (CTR L+V).</p>
<div><div>quickInfo: "ACME Bidding Process for Docu Screenshots (equals Mustermann Angebotsprozess)",</div><div>hashtags: [],</div><div>modelDictionary: [<div><div>"key": "ACME Bidding Process",</div><div>"de": "ACME Angebotsprozess",</div><div>"en": "ACME Bidding Process",</div><div>"id": "jqg66",</div><div>"id": "jqg66",</div></div></div></div> <div>Ln:39569 Col:2</div> <div><div><div></div></div><div><div>CLOSE</div><div>EXPORT</div></div></div>	<p>Irene has saved her export, so she clicks the Close button to exit the export dialog.</p>

Exporting from the BPaaS Editor

Projects, EPC models, app projects and even individual forms can be exported directly from of the BPaaS Editor.

	<p>Open the model you want to export.</p> <p>In our example, Irene Adler opens the app project Employee Database.</p>
	<p>In the Project Editor Irene opens the context menu (right-click on the work area) and selects the option Export Model.</p>
	<p>The export dialog is displayed in a separate pop-up window.</p>
	<p>Irene opens the Depth drop-down list to select the depth of her export.</p> <p>She has the choice between two options:</p>

- Maximum
- Only Current Model



The differences between the available options are explained in more detail in section [Expo Options](#).

Export model ✕

Depth
Maximum

Display Options
Pretty Print

EXPORT

Pretty Print
Unformatted

Then Irene opens the Display Options drop-down list to choose the display of the export.

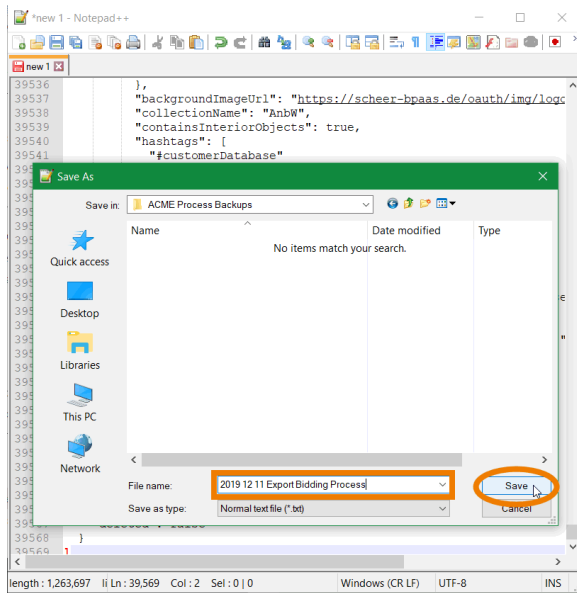
She has the choice between two options:

- **Pretty Print**
- **Unformatted**



The differences between the available options are explained in more detail in section [Export Options](#).

<div><div>Export model</div><div><div>Depth</div><div>Maximum</div></div><div><div>Display Options</div><div>Pretty Print</div></div><div>EXPORT</div><div>Export</div><div>1</div></div>	<p>It is recommended not to change the default export options.</p> <p>Irene keeps the default settings and starts the model export by clicking on the button Export.</p>
<div><div>Export model</div><div><div>Depth</div><div>Maximum</div></div><div><div>Display Options</div><div>Pretty Print</div></div><div>EXPORT</div><div>Export</div><div>1 Model export started.</div><div>2 Please wait.</div></div>	<p>The following message appears for a short moment:</p> <ul style="list-style-type: none">• Model export started • Please wait.
<div><div>Export model</div><div><div>Depth</div><div>Maximum</div></div><div><div>Display Options</div><div>Pretty Print</div></div><div>EXPORT</div><div>Export</div><div>1 {</div><div>2 {</div><div>3 "name": "Employee Database",</div><div>4 "id": "rpf06da7fc-b285-4d71-8953-fa8d8b5e5966",</div><div>5 "type": "paProject",</div><div>6 "dataBag": {</div><div>7 "headerText": "processAppProjectLabel",</div><div>8 "label": "Employee Database",</div><div>9 "disableWidgetTypeInfo": false,</div><div>10 "translationKeys": [</div><div>11 "App Project-r9qc"</div><div>12],</div><div>13 "idRepo": "rpf06da7fc-b285-4d71-8953-fa8d8b5e5966",</div><div>14 "runMainEpcModelNew": {</div><div>15 "label": "Employee Database Model",</div><div>16 "value": "Employee Database Model",</div><div>17 "data": {</div><div>18 "name": "Employee Database Model",</div><div>19 "id": "3e6f1a70-b7f6-49b1-a45c-b7c1a375c580",</div><div>20 "type": "modelEpc",</div><div>21 "hashtags": [</div><div>22 "#staffDatabase"</div><div>23 <</div></div>	<p>After successful export, the result is displayed in the export window.</p> <p>Irene selects the whole content window with CTRL+A and copies it to the clipboard with CTRL+C.</p>
	<p>Irene opens her text editor (Note pad++) and uses CTRL+V to paste the content of the clipboard to a new file. Then she saves the file on her computer. Irene has now created a backup copy of her app project.</p>



The content of the export is JSON (JavaScript Object Notation). Instead of the file extension *.json, you can also use *.txt to save the export.



To get a full backup of your Scheer PAS BaaS content, repeat the previous steps

Export Options

In the export editor you will find the two options **Depth** and **Display Options**.

Depth

Export model

Depth

Maximum

Maximum

Only Current Model

Only Current Model

EXPORT

- Maximum /Full Export:** All components of all parts of the model are exported from the Editor level in which the export window is opened downwards.
- Only Current Model:** Only the content of the currently opened Editor level is exported.



It is recommended that you keep the default. The option **Only Current Model** is mainly used by developers.

Display Options

Export model

Depth

Maximum

Display Options

Pretty Print

Pretty Print

Unformatted

EXPORT

- **Pretty Print /Formatted Layout:**

The code is formatted, which means that it is displayed in readable format.

- **Unformatted /Condensed Layout:**

Output of the result in a single row. For large models, several MB of memory can be saved compared to the formatted export.



The condensed layout is mainly used by developers.