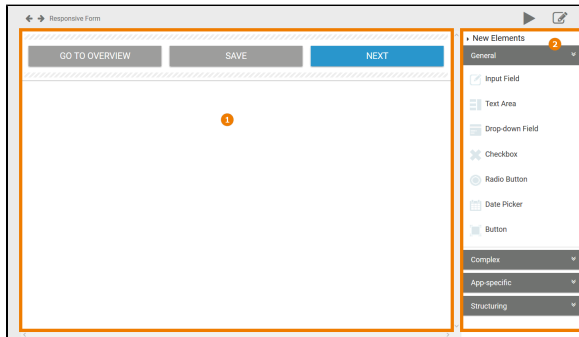


Creating Forms

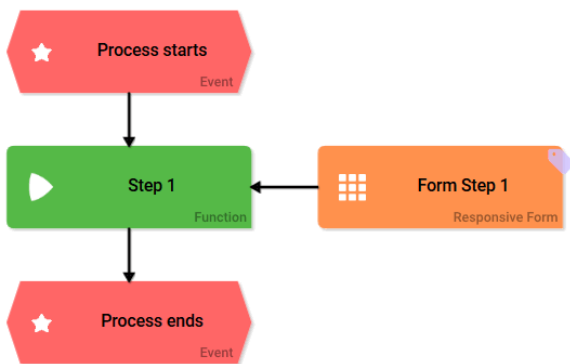
Just like EPCs, forms are created in an editor. The Forms Editor differs only marginally from the working environment in EPC models:

1. On the left side of the **Forms Editor** you will find the work area, where you design your form.
2. The **Sidebar New Elements** on the right side provides an overview of all available form elements.
Expand the categories [General](#), [Complex](#), [App-specific](#) and [Structuring](#) to display and use the elements.



Related Pages:

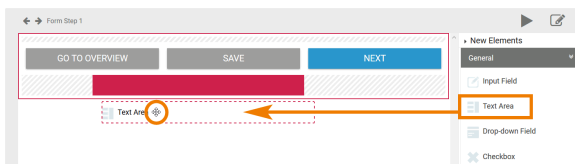
- [Working with BPaaS Editor](#)
- [Form Elements](#)
 - [General](#)
 - [Complex](#)
 - [App-specific](#)
 - [Structuring](#)



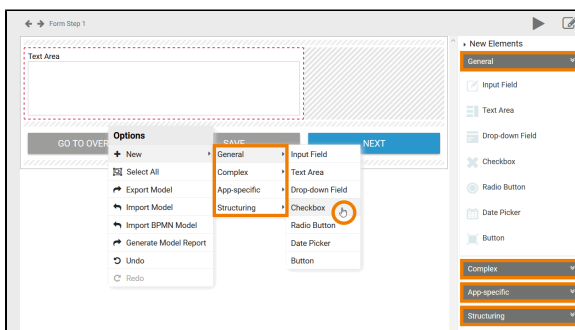
A **Responsive Form** was added to an EPC model:

- Forms are always attached to **functions!**
- **Events** are status descriptions and therefore do not contain any forms.
- The direction of the **connection** leads from form to function.

Open the form to design its content.



You can drag and drop fields from the **Sidebar New Elements** onto the work area. The red frame indicates where the element will be placed.



You can also use the context menu to create new elements.

Use a right click on the work area to open the menu.

In the submenu **New** you can find all available form elements, displayed in the same way as in the **Sidebar New Elements**. Move the mouse over a category to display the available elements.

Create the new element via mouse click, for example a **checkbox**.

After you have created a new form element, you will find the **Edit Sidebar** next to the Sidebar New Elements.

Here you can edit the settings of the currently marked form element, for example rename it, define it as mandatory and much more.



A form must contain at least one **Button** so that the user can save data or call up the next form, if available.

Once you designed the form, you can test it using the **Play** button.

View Desktop:

A new window opens. Use the icons in the top left corner to select the view:



The following options are available to view your form:




- Display on **PC**
- Display on **Tablet**
- Display on **Mobile Phone**



Use the display to optimize your forms for the required device.

View Tablet:

Show Form



Contact Data

First Name

Last Name

E-mail

Phone

GO TO OVERVIEW

SAVE

NEXT

View Mobile Phone:

Show Form

Contact Data

First Name

Last Name

E-mail

Phone



Please be aware that **no synchronization** will occur between simultaneously opened browser tabs and windows while working on models and forms. Changes made in one window/tab will not automatically appear in a second window/tab. In order to display changes made in a separate window/tab you need to reload your current page.