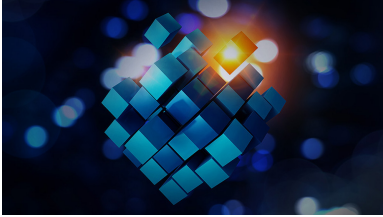


# Home



The **Scheer PAS Business Modeler** supports companies on their way to digital transformation. It is an easy to use, innovative and cloud-based modeling tool that provides the ability to create and evaluate business processes via a graphical, browser-based user interface.

Thanks to the intuitive web-based user interface, users are able to design and optimize their own processes, process maps, organizational and IT data structures including requirements and risks in just a few minutes. This approach forms the basis for subsequent process automation in the **Scheer Process Automation Suite (PAS)**.

## Related Pages:

- [Introduction to Scheer PAS Business Modeler](#)
- [Working with Scheer PAS Business Modeler](#)
- [Model Processes](#)
- [Video Tutorials](#)