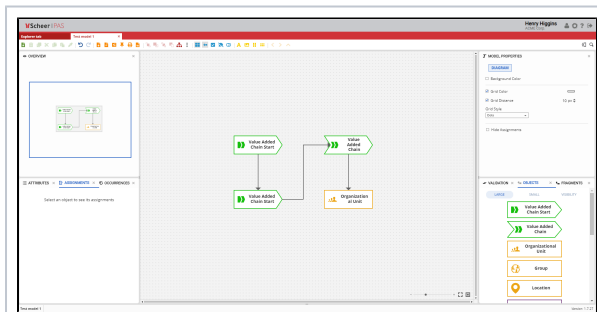


Overview

Overview Location



The **Overview panel** gives you the option to navigate to specific sections of the model.

It is located by default on the upper left side of the Canvas.

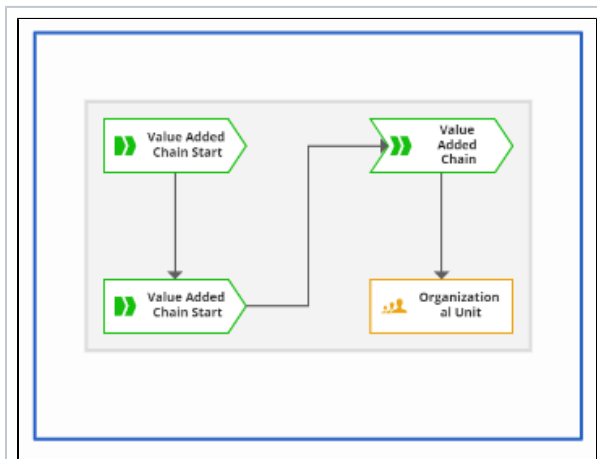
On this Page:

- [Overview Location](#)
 - [Overview Window](#)
 - [Moving Canvas](#)

Related Pages:

- [Overview](#)
- [Attributes](#)
- [Assignments](#)
- [Occurrences](#)
- [Model-Object Properties](#)
- [Objects](#)
- [Fragments](#)
- [Validation](#)
- [Language Panel](#)
- [Compare Model](#)

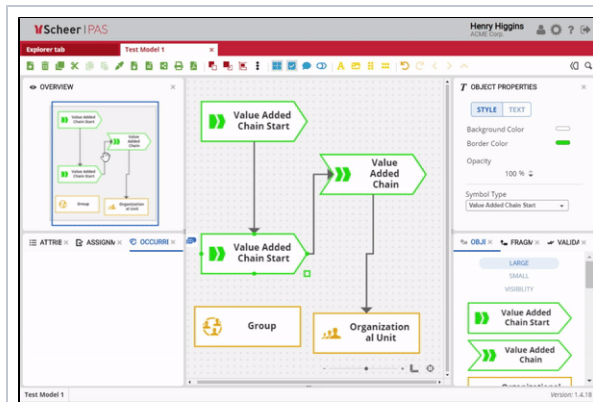
Overview Window



You can see a full presentation of the model on the **Overview panel**.

The image inside the blue frame presents your current zoomed view of the whole model in the Canvas.

Moving Canvas



You are able to quickly move the Canvas through the **Overview panel**. Just hold left click on your mouse and move it around to see the objects on the Canvas moving.