

Testing the Service with the E2E Analyzer Lesson 3 MD18

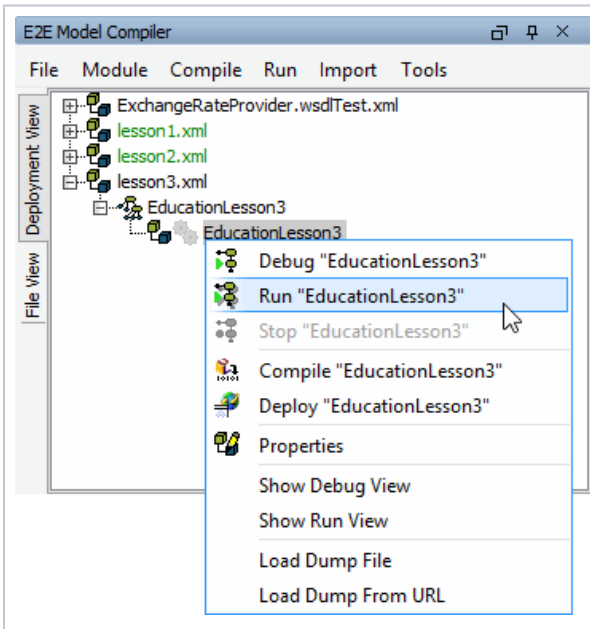
Remember that E2E Analyzer is the interface to the trace feature with which you can test all operations on the fly. It traces the execution path of a service that is run through the test. You can view this path graphically, e.g. in order to debug Web services or verify their correct functioning. Each operation defined on a port type can be tested with this tool. It makes no difference whether the service is running in the E2E Embedded Runtime or has been deployed to a server.

For detailed information on the E2E Analyzer and it's features see the [ANALYZER User's Guide](#). If you want to try out the Analyzer, refer to the [Analyzer Installation Guide](#). There you will also find a link for downloading the Analyzer from the E2E homepage.



Test Case Properties

Starting the Service and the Analyzer



Start the education service of lesson 3 in the Embedded Runtime and start the E2E Analyzer.

? Unknown Attachment

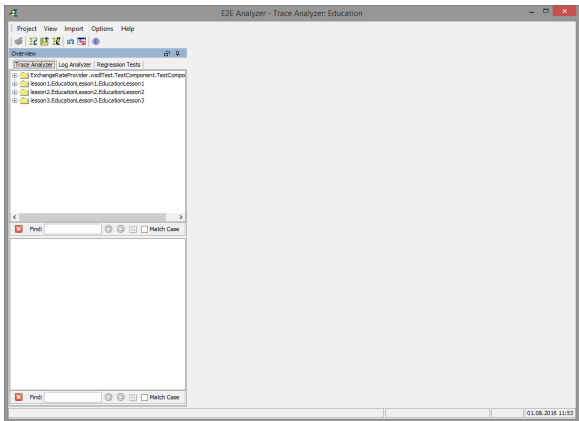
On this Page:

- [Starting the Service and the Analyzer](#)

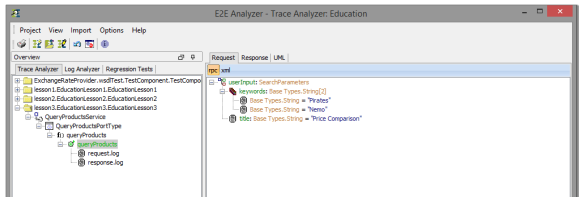
Related Pages:

- [Analyzer User's Guide](#)
- [Analyzer Installation Guide](#)

As you have used the Analyzer before with lesson2, E2E Builder Project **Education** reopens automatically.



Expand the tree of the lesson3 service **lesson3.EducationLesson3.EducationLesson3**.



You can see the request and response log from the earlier running of the test case with the **E2E SOAP Test Tool**.