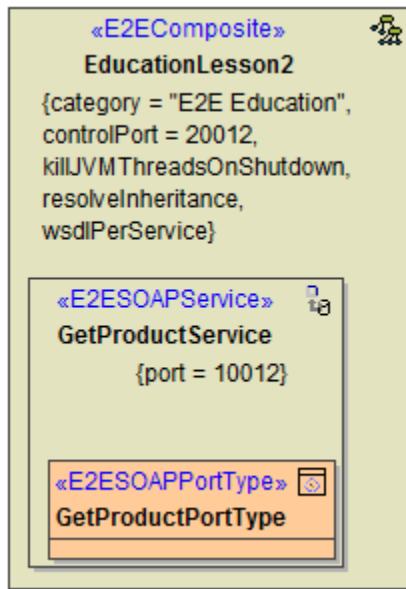


Components Lesson 3.1 MD18



In the picture below, the component diagram, which results from the work in lesson 2, is displayed. The component diagram will be extended now by using the E2E Components Wizard.

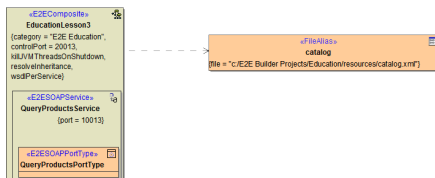


Compilation

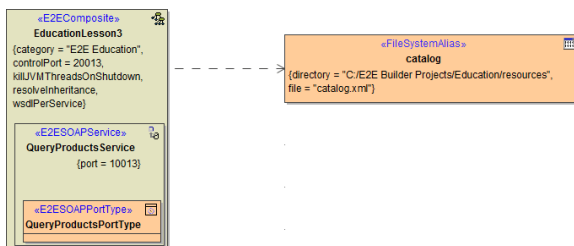
On this Page:

- [Reworking the Component Diagram](#)
- [Extending the Component Diagram](#)

Bridge 7 You will specify a `<<FileAlias>>` in the xUML service **Education**. After running the E2E Components Wizard, the component diagram will look like shown in the following picture.



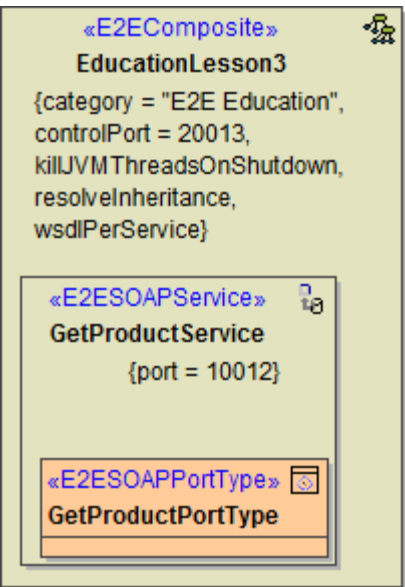
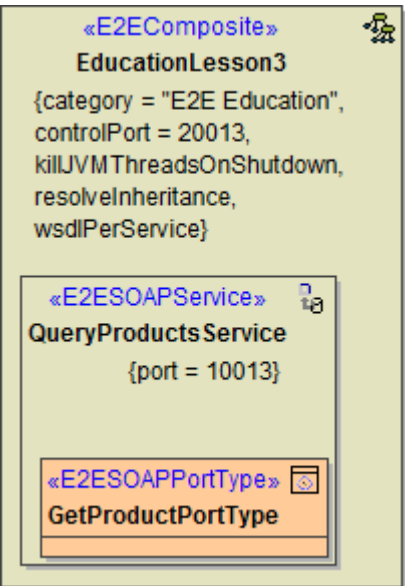
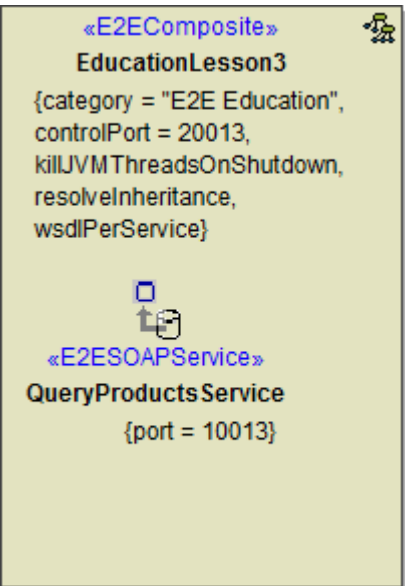
You will specify a `<<FileSystemAlias>>` in the xUML service **Education**. After running the E2E Components Wizard, the component diagram will look like shown in the following picture.




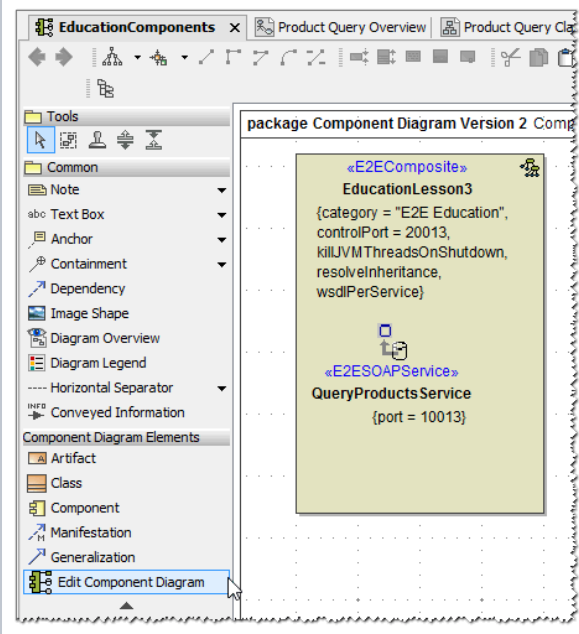
Reworking the Component Diagram

For extending the existing configuration you created in lesson 2, you will use the Components Wizard to define a file backend. But first, you will do some renaming.

Open the component diagram **EducationComponents** in node **Component View** of the containment tree.

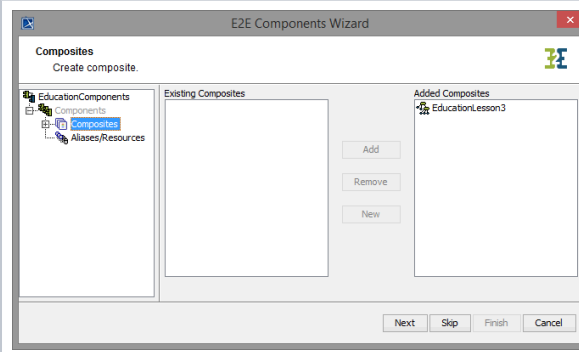
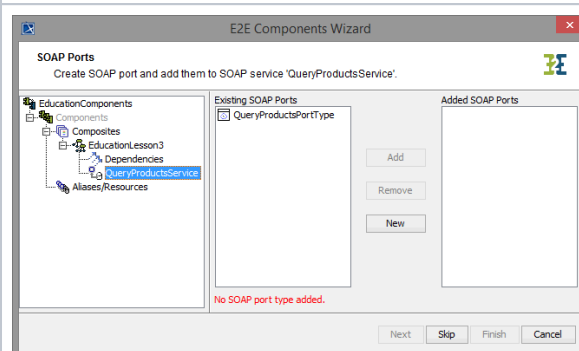
 <p>«E2EComposite» EducationLesson3</p> <pre>{category = "E2E Education", controlPort = 20013, killJVMThreadsOnShutdown, resolveInheritance, wsdlPerService}</pre> <p>«E2ESOAPService» GetProductService {port = 10012}</p> <p>«E2ESOAPPortType» GetProductPortType</p>	<p>Rename the xUML service EducationLesson2 and assign the new name EducationLesson3.</p> <p>Change the control port of the service to 20013.</p>
 <p>«E2EComposite» EducationLesson3</p> <pre>{category = "E2E Education", controlPort = 20013, killJVMThreadsOnShutdown, resolveInheritance, wsdlPerService}</pre> <p>«E2ESOAPService» QueryProducts Service {port = 10013}</p> <p>«E2ESOAPPortType» GetProductPortType</p>	<p>Rename the service component GetProductService and assign the new name QueryProductsService.</p> <p>Change port number of the service component artifact to 10013.</p>
 <p>«E2EComposite» EducationLesson3</p> <pre>{category = "E2E Education", controlPort = 20013, killJVMThreadsOnShutdown, resolveInheritance, wsdlPerService}</pre> <p>«E2ESOAPService» QueryProducts Service {port = 10013}</p>	<p>Delete the port type definition GetProductPortType.</p> <p>Use Ctrl - D for the deletion, as you not only want to delete the symbol from the diagram pane, but also the port type definition from the containment tree.</p>

Click the icon  **Edit Component Diagram** from the diagram toolbar to start the Components Wizard.

	<p>Do not use the icon E2E Components Wizard in the MagicDraw menu bar, as this would create a new component diagram.</p>
---	--

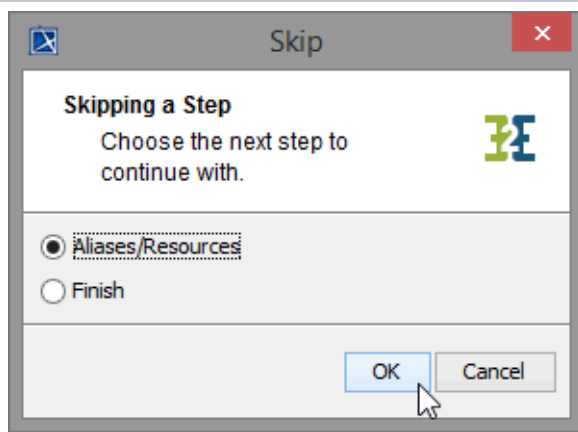
Extending the Component Diagram

The **E2E Components Wizard** dialog window opens.

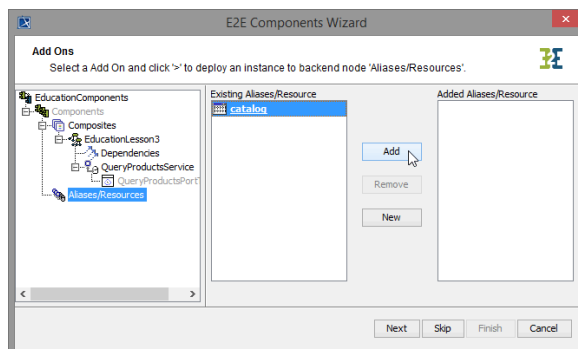
	<p>The wizard displays the service composite EducationLesson3.</p>
	<p>Expand the tree on the left and navigate to the component QueryProductsService.</p>

	<p>Select QueryProductsPortType and click Add to create the composite.</p>
	<p>Leave the name QueryProductsPortType and click OK.</p>
	<p>In the customization panel on the right, you will find the new port type composite QueryProductsPortType.</p> <p>You now have completed the frontend of your Web service for lesson 3.</p> <p>Click Skip.</p>

As the Web service will read data from an XML file, you need to define a backend. As you read a file using the file system adapter, you need to define a file system alias in the component diagram in order to access the XML file. You will add the alias defined in step [Reading the XML File](#) to the component diagram. By that, you can link the physical definition of the backend with the logical definition in the activity diagram, where the backend adapter is used.

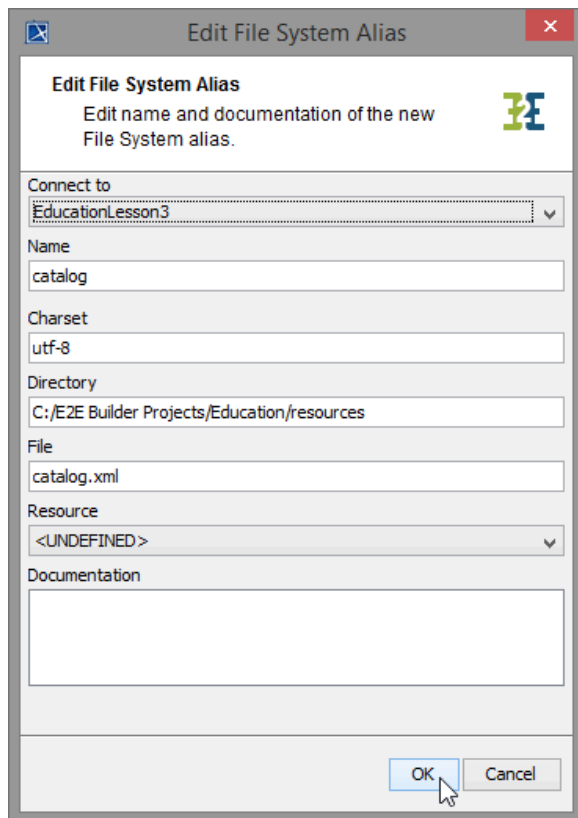


Choose the option **Aliases/Resources** in the **Skip** dialog.



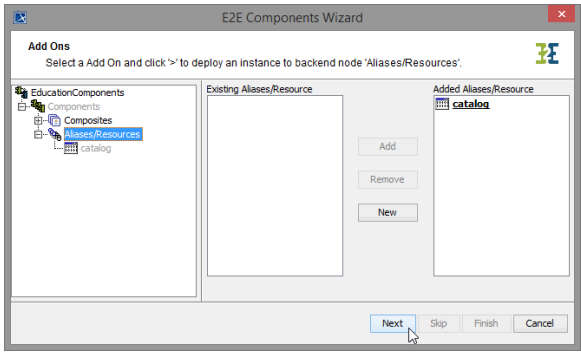
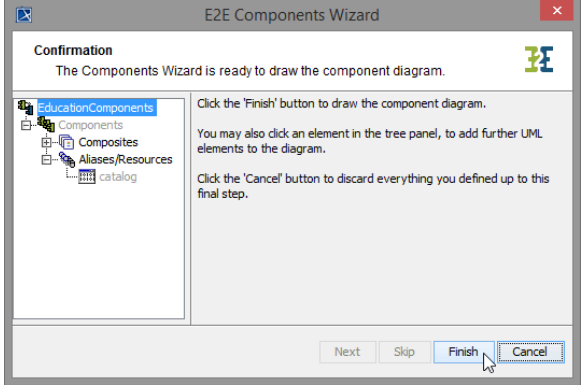
In the list of **Existing Aliases/Resources**, the Components Wizard displays your previously defined alias **catalog**.

Select it and click **Add** to add it to the component diagram.

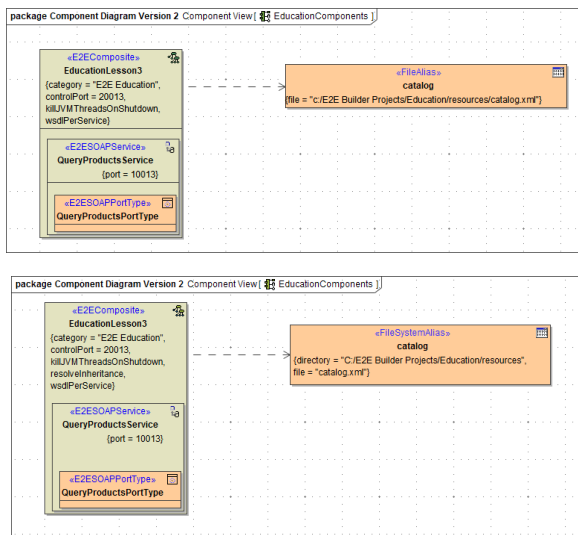


The details of the alias are displayed.

Click **OK**.

 <p>The screenshot shows the 'Add Ons' step of the E2E Components Wizard. On the left, a tree view shows 'EducationComponents' expanded, with 'Composites' and 'Aliases/Resources' visible. 'Aliases/Resources' is selected, and 'catalog' is listed below it. In the center, there are 'Add', 'Remove', and 'New' buttons. On the right, the 'Added Aliases/Resource' list contains 'catalog'. At the bottom, the 'Next' button is highlighted with a mouse cursor.</p>	<p>The file system alias catalog has been added to the component diagram.</p> <p>Click Next.</p>
 <p>The screenshot shows the 'Confirmation' step of the E2E Components Wizard. It states 'The Components Wizard is ready to draw the component diagram.' and instructs the user to click the 'Finish' button. The tree view on the left is the same as in the previous step. The 'Finish' button at the bottom is highlighted with a mouse cursor.</p>	<p>All necessary components and artifacts have been defined. Therefore, the wizard skips to the final step. You need to confirm drawing the component diagram.</p> <p>Click Finish.</p>

Bridge 7 The component diagram will be re-drawn in MagicDraw. The defined components are saved in the package **Data / Component View** and the generated component diagram will open.



The xUML service artifact **EducationLesson3** contains the SOAP service **QueryProductsService** and its port type **QueryProductsPortType**. At the backend side, the file system alias **catalog** connects the file **catalog.xml** to the service composite.

Save  the UML model.

Now, the xUML service **EducationLesson3** can be compiled.