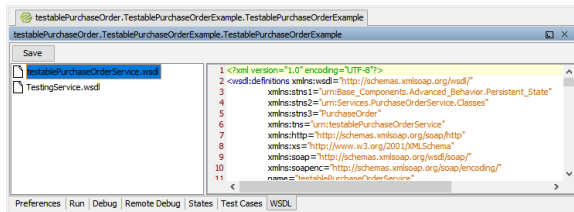


Overview on the WSDL View

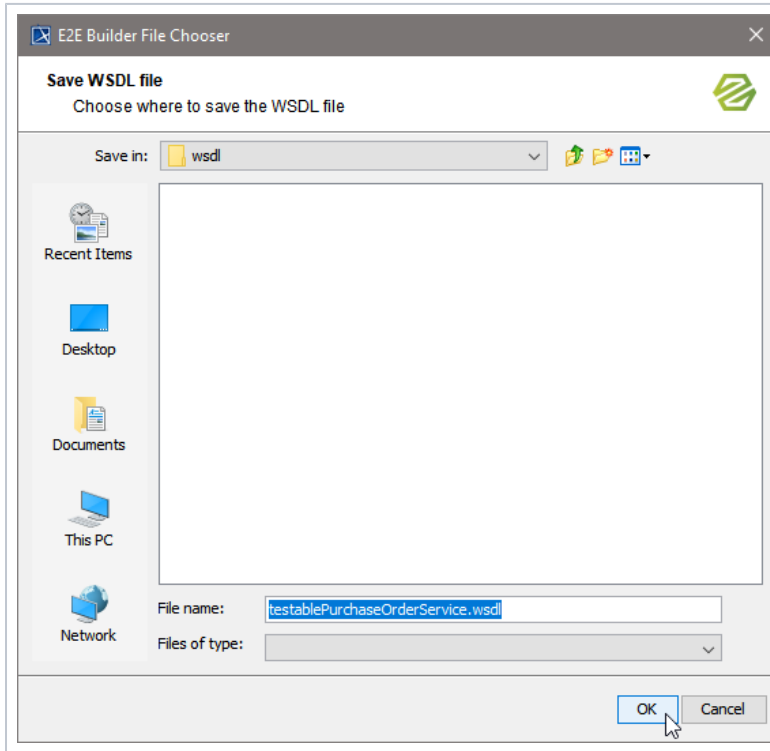
Use the **WSDL** view to inspect and download the WSDL files of the service.



Related Pages:

- [xUML Service Details](#)

Select a WSDL file in the left window pane to display the WSDL file in the right window pane. Refer to [xUML Service Details](#) for more information on how to access the WSDL file on the E2E Bridge.



To save a WSDL file, click **Save** and select a folder to save the WSDL file to.
Click **OK** to save the file.