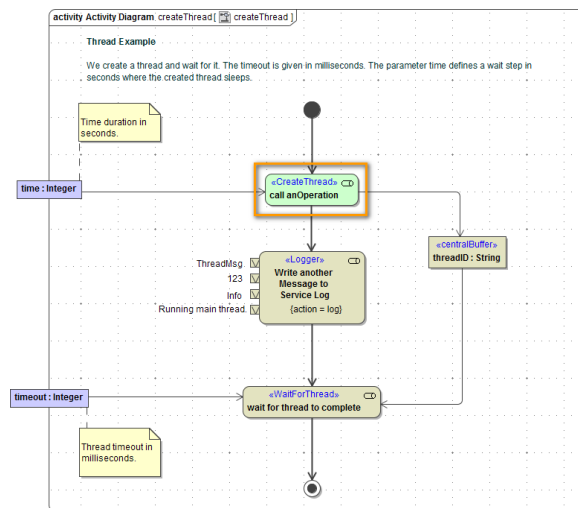


Create a Thread

With the **Create Thread Adapter** deprecated, you can create threads from a service call or independent threads. Each new thread runs an operation parallel to the main thread.



On this Page:

- [Parameters](#)

Related Pages:

- [Block a Thread](#)
- [Wait for a Thread \(deprecated\)](#)
- [Thread Adapter Reference](#)

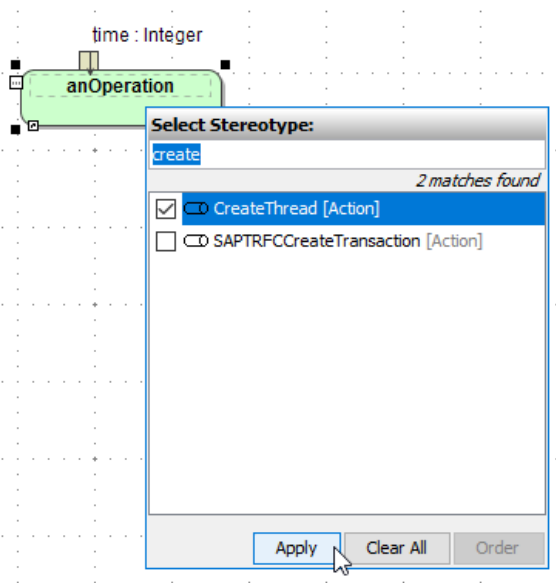
You can create a new thread using a **Call Operation Action** with stereotype **<<CreateThread>>**.

The screenshot shows a context menu for the 'anOperation' call operation action. The menu options are:

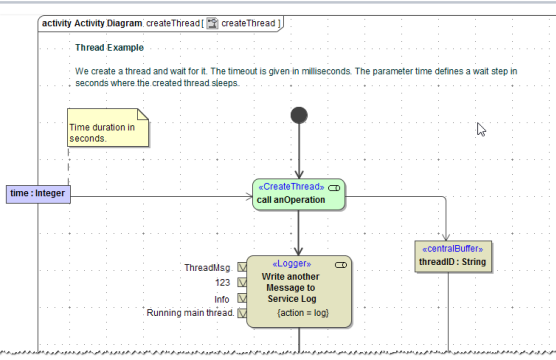
- Specification
- Symbol Properties
- Add Breakpoint
- Remove Breakpoint
- Go To
- Select in Containment Tree
- Related Elements
- Refactor
- Tools
- Edit Compartments
- Stereotype** (highlighted)
- Select Operation
- REST Adapter

Drag and drop the operation you want to call onto the diagram pane. The call operation action is displayed including the related pins.

Choose **Stereotype** from the context menu.



Use the search field to find the `<<CreateThread>>` action. Activate the checkbox to assign it.



A thread has no output besides the automatically generated **threadID** (see [Parameters](#)).

You cannot use the Action Wizard to add a `<<CreateThread>>` action. The wizard is only usable for `<<BlockThread>>` and `<<WaitForThread>>`.

Parameters

Name	Type	Direction	Description	Allowed Values
threadID	String	out	For every thread a distinct ID is automatically generated.	any string

The **createThread** action has no default input parameters, you can define as many input parameters as needed.