

# Dynamic Configuration of SQL Adapters



This page explains the **SQL Adapter** in Bridge context. If you were looking for the same information regarding the **PAS Designer**, refer to **SQL Adapter** in the Designer guide.

## Related Pages:

- [SQL Adapter Reference](#)

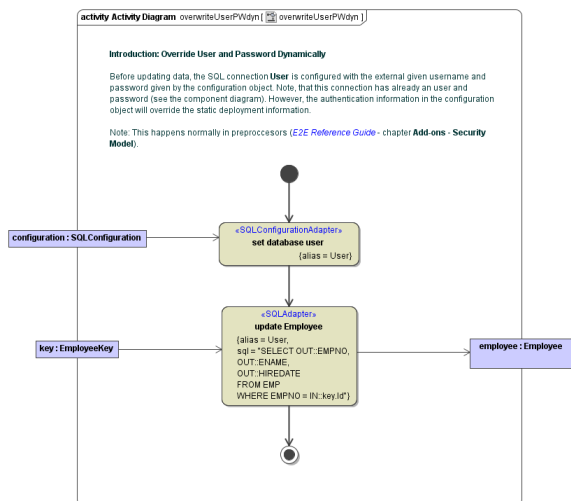
The SQL connection can be configured statically in the component diagram on the [SQL alias](#). However, sometimes it is necessary to set user and password at runtime. This can be done using the `<<SQLConfigurationAdapter>>`.

### Example File (Builder projectAdd-ons/SQL):



<your example path>\Add-ons\SQL\uml\sqlConfiguration.xml

The SQL Configuration Adapter can be used to set the authentication parameters only, as is explained in the following diagram:



Class **SQLConfiguration** contains the authentication information:

