

Static Sending and Receiving

To communicate statically with a message queue means, that the connection to a queue is defined in the component diagram (and not dynamically within action script). Once a JMS session has been opened by a service by sending or receiving a message, this session stays open and is used for further send or receive operations as long as the service is running. Listeners maintain their own JMS session. See [JMS Connection and Session Pooling](#) for more information on connections to a JMS.

On this Page:

- [Sending](#)
- [Receiving](#)

Example Files (Builder project Add-ons/JMS):

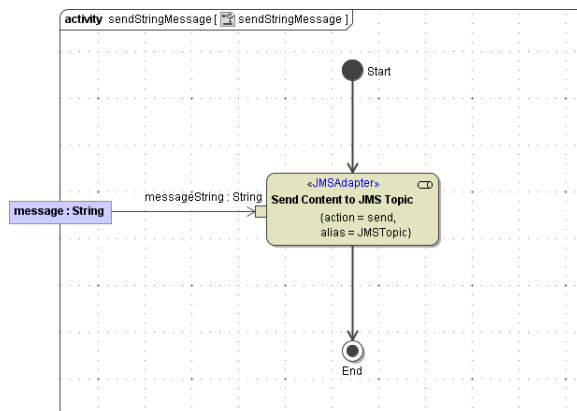


```
<your example path>\Add-ons\JMS\uml\simpleStatSendReceive.xml  
<your example path>\Add-ons\JMS\uml\simpleStatSendReceive_Depl_ActivMQ.xml  
<your example path>\Add-ons\JMS\uml\simpleStatSendReceive_Depl_WebLogic.xml  
<your example path>\Add-ons\JMS\uml\simpleStatSendReceive_Depl_GlassFish.xml  
<your example path>\Add-ons\JMS\uml\simpleStatSendReceive_Depl_GlassFish_FileJNDI.xml
```

Sending

The sending of messages to a JMS provider is done by the use of the `<<JMSAdapter>>`. The figure below illustrates the basic structure of an activity diagram using it. The JMS connection settings are specified in the component diagram.

Figure: Activity Diagram for Sending a JMS Message Staticly



JMS adapters are able to send messages of type String or of type Blob.

The `<<JMSAdapter>>` action can be defined by the help of the Action Wizard.

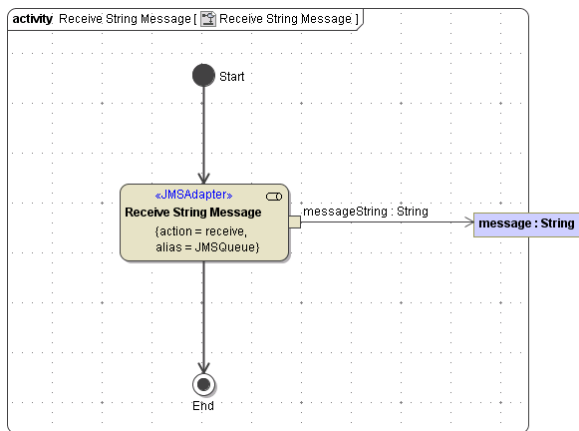
For sending messages to a JMS provider the following parameters are applicable to the JMS adapter action:

- messageString or messageBlob
- jmsStringMessage or jmsBlobMessage (For more details on the JMS Header see [JMS Message Header Fields](#).)
- sendParameter (For more details see chapter [JMS Send Parameter](#).)

Receiving

The manual receipt of messages from a JMS provider is done by the use of the `<<JMSAdapter>>`. The figure below illustrates the basic structure of an activity diagram using it. The JMS connection settings are specified in the component diagram.

Figure: Activity Diagram for Reveiving a JMS Message Staticly



JMS adapters are able to receive messages of type String or of type Blob.

The <<JMSAdapter>> action can be defined by the help of the Action Wizard.

For receiving messages from a JMS provider the following parameters are applicable to the JMS adapter action:

- messageString or messageBlob
- jmsStringMessage or jmsBlobMessage (For more details on the JMS Header see chapter [JMS Message Header Fields](#).)
- receiveParameter (For more details see chapter [JMS Receive Parameter](#).)

The receipt of messages with **Active MQ** is only reliable using `millisecondsToWait >= 10` . This receive parameter can only be specified using dynamic JMS.