

Calling Java Methods from a xUML Model

In the activity diagram, you can call methods of imported classes with the Java adapter.

Example Files (Builder project Add-ons\Java):



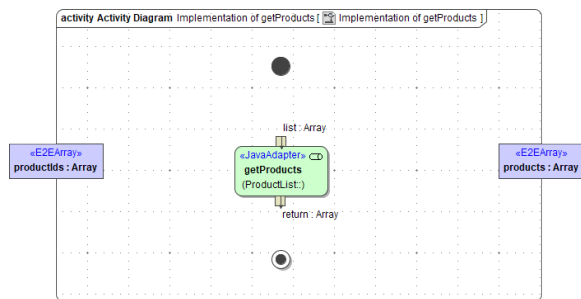
<your example path>\Add-ons\Java\uml\javaCollections.xml

Related Pages:

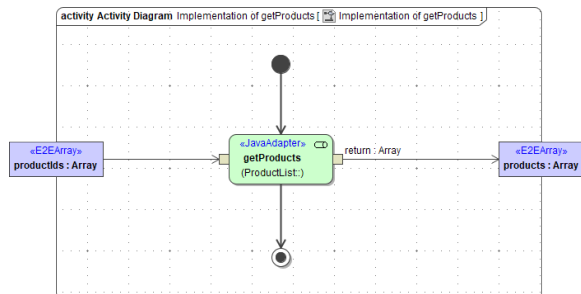
- [Getting Started with the Java Adapter > Java Class Development Hints](#)

Generally, class methods are called by **Call Operation Actions** in an activity diagram. You can select the imported Java method you want to call from the containment tree, and drag and drop in onto the diagram pane.

In the following examples, the Java adapter is used to call method **getProducts**, which is a member method of class **ProductList**. It takes a number of product ids as input and returns an array of product objects.



The action pins correspond to the parameters of the class operation. The Java adapter has one input and one output pin. Input pin **list** represents the input parameter of the Java method **getProducts** with exactly that same name, output pin **return** respectively represents the return value of the Java method.



Also have a look at the development hints on [Getting Started with the Java Adapter > Java Class Development Hints](#).