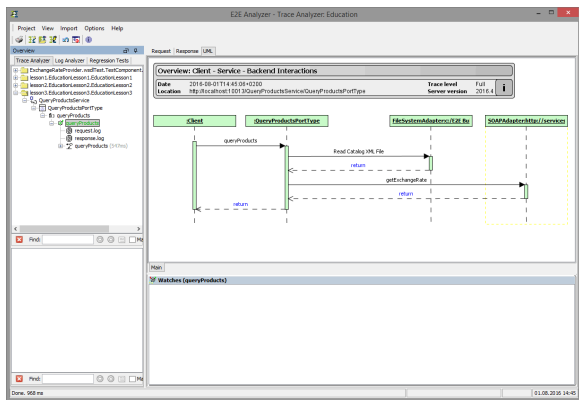
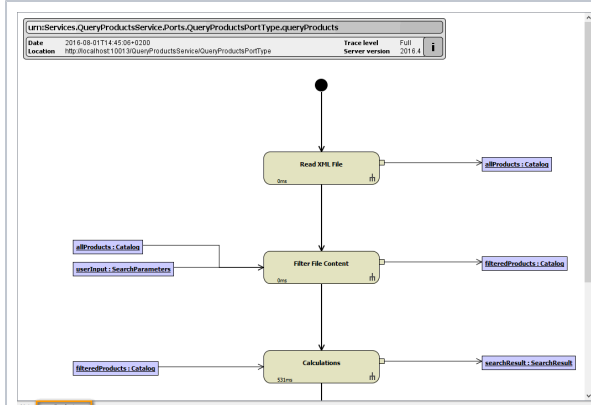
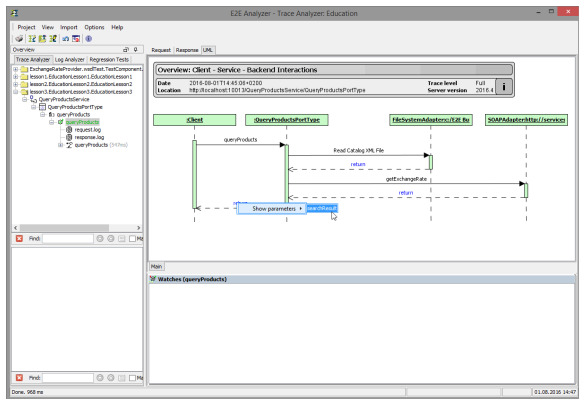


Tracing through the Service Lesson 3 MD18

Switch to the **UML** tab.

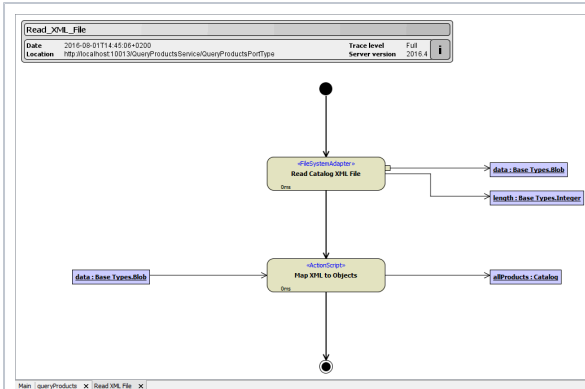


You can see the **Query Products** service reading the XML file and calling the external Web service on **services.e2ebridge.com**. Trace through the UML model. The output parameters can be visualized in the Watches panel by right-clicking the message **return** and selecting **Show Parameters**.



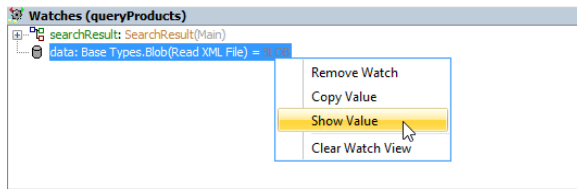
Clicking the operation name **queryProducts** in the main diagram (tab **Main**), the new tab **queryProducts** will be displayed (see bottom of the window). It shows the activity diagram **QueryProducts**, which is assigned to the selected operation.

Click action node **Read XML File**.

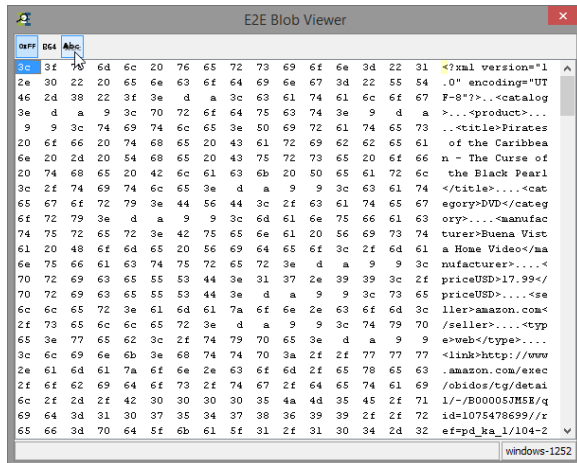


The behavior of this action, the activity diagram **Read XML File**, is displayed.

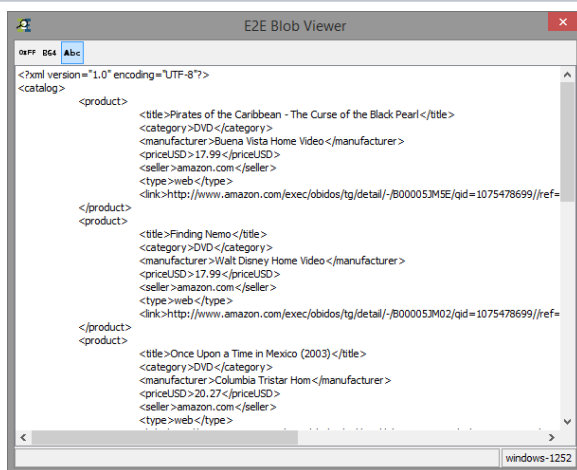
Click the object **data**. The object will be added to the Watches list.



Double-clicking the object data in the watches panel or selecting **Show Value** from the context menu will open the **E2E Blob Viewer** showing the complete content of the blob.

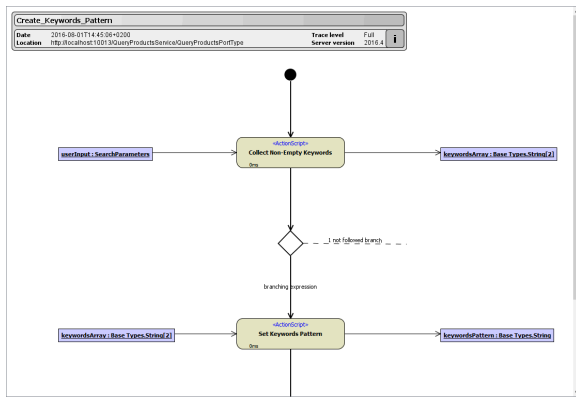


If the Blob Viewer shows the blob in hexadecimal encoding, click **ABC** to decode it.

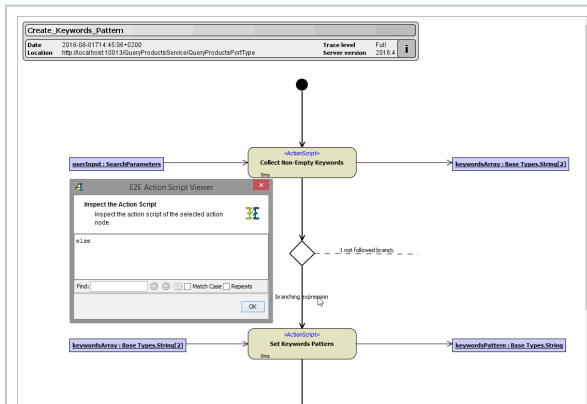


The Blob Viewer shows the decoded blob so that the content of the XML file is viewable in plain text.

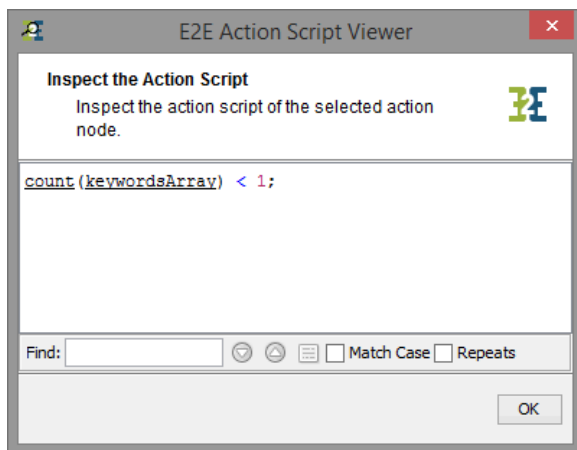
Switch back to the tab **queryProducts** and navigate through **Filter File Content** to **Create Keywords Pattern**.



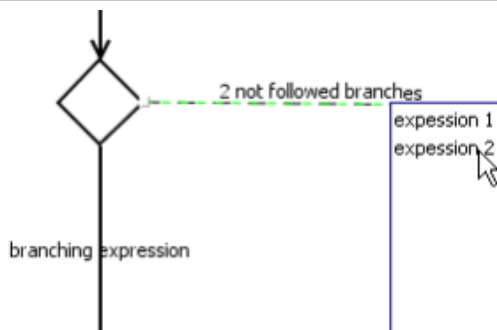
Note the branch, which was followed according to the evaluated expression in the decision node.



Clicking on the term **branching expression** displays the branching expression.



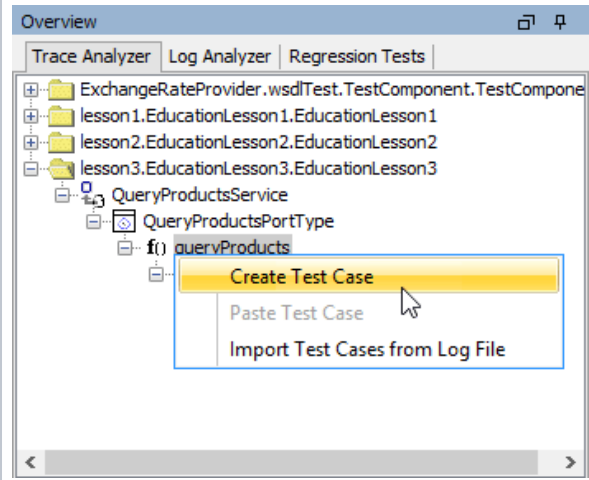
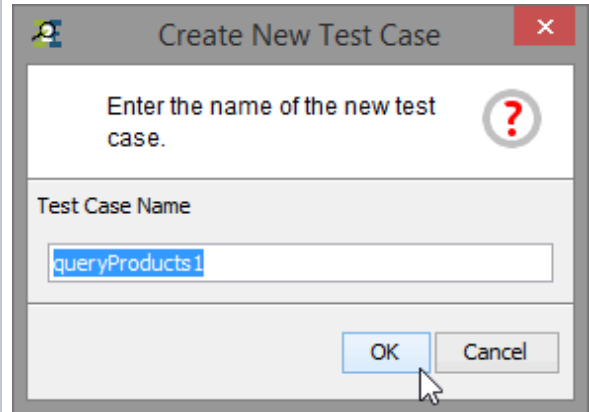
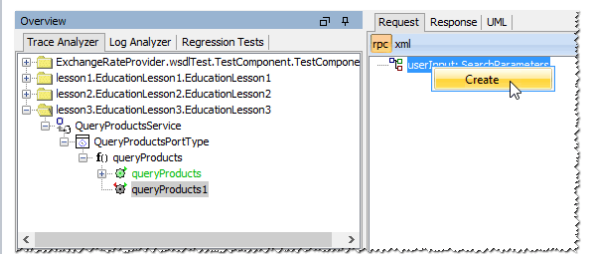
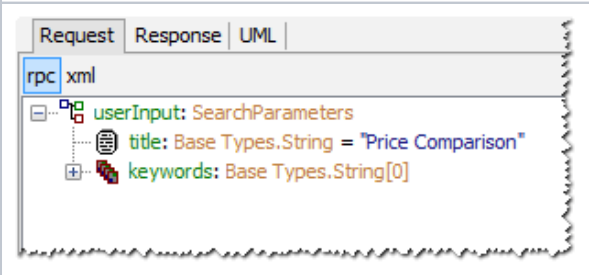
On the right side of the decision, you can see **1 not followed branch**. Clicking it and the branching expression is displayed.



If there is more than one unfollowed branch (which is possible as well), a box with a list of all not followed branches is displayed. By clicking e.g. **expression1** the not matching expression is displayed.

Q
f
e
r
t
h
e
X
J
N
L
S
e
r
j
ic
e
s
T
e
r
e
n
c
e
G
U
d
f
o
r
n
o
r
e
ir
f
o
r
n
e
ti
o
n
t
h
e
p
o
s
s
i
b
l
ie
s
o
f
t
h
e
E
N
E
n
g
e

You can run a second test case with other parameters.

	<p>Select queryProducts from the left tree and create a second test case.</p>
	<p>Leave the default name for the new test case and click OK.</p>
	<p>Create userInput and the keywords array.</p>
	<p>Enter a title and no keywords and run the test case.</p>

Switch to the UML tab and navigate to **Create Keywords Pattern**. Note, that now the branching expression and the control flow differs from the previous test case.

