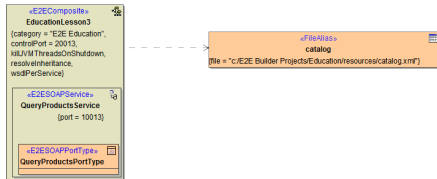


Components Lesson 3.2 MD18



Bridge 7 In the picture below, the component diagram, which results from the first iteration, is displayed. You now are going to insert a SOAP Adapter to access the E2E Exchange Rate Converter.

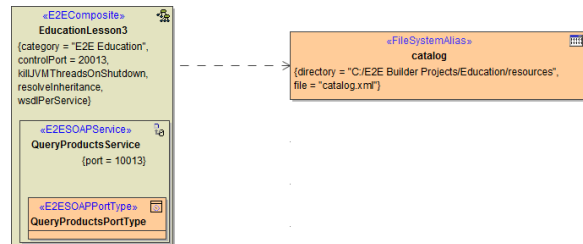
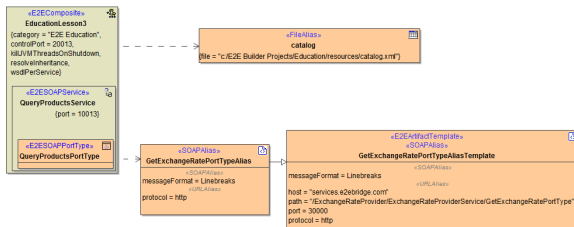


Compilation

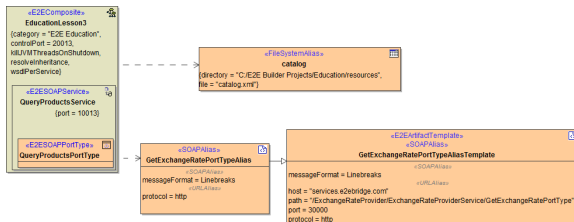
On this Page:

- [Reworking and Extending the Component Diagram](#)

After adding the SOAP Alias, the component diagram will look like shown in the following picture.



After adding the SOAP Alias, the component diagram will look like shown in the following picture.

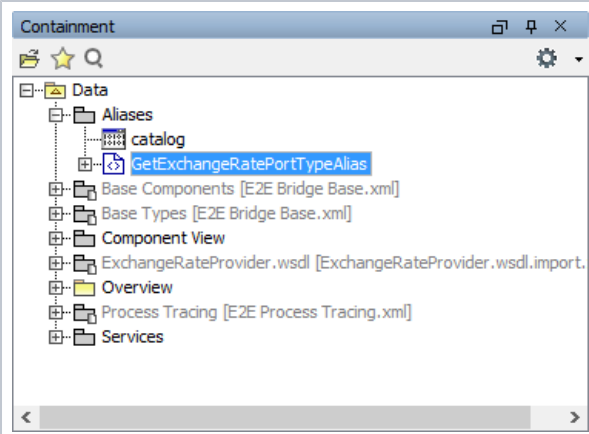
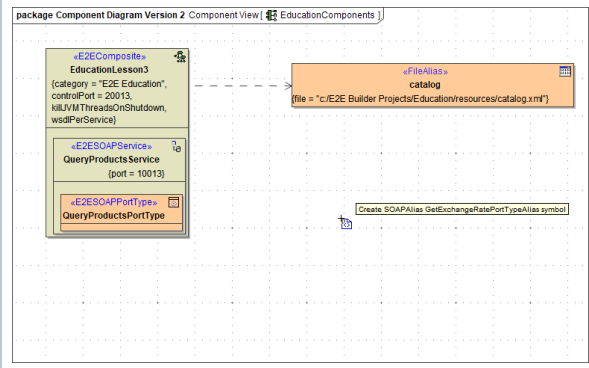
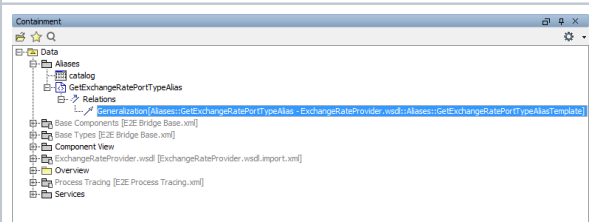
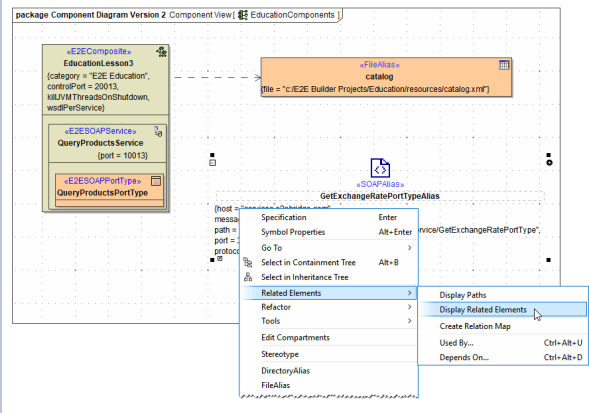


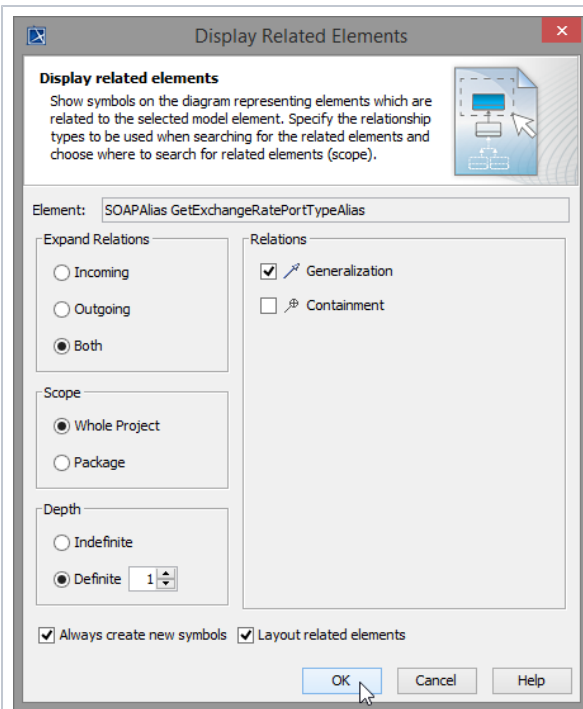
Reworking and Extending the Component Diagram

The existing configuration you created in the first iteration of lesson 3, will now be extended to be able to access the ExchangeRateProvider service. To do this, you have to add a `<<SOAPAlias>>` artifact to the component diagram.

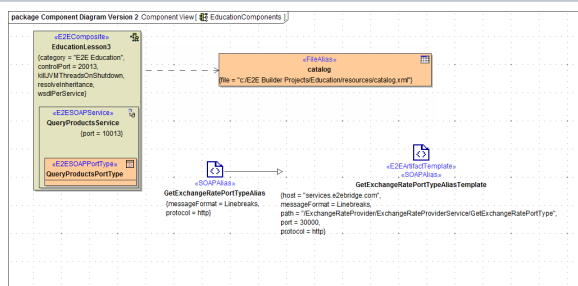
Open the component diagram **EducationComponents**.

All elements you need for accessing the ExchangeRateProvider service have been provided during the import of the service's WSDL - including the SOAP alias. Now you have to add the alias to the component diagram.

	<p>Expand the package Data > Aliases and select GetExchangeRatePortTypeAlias.</p>
	<p>Bridge 7 Drag and drop the alias on the diagram pane.</p> <p>Bridge 6 The component diagram looks slightly different, see top of page.</p>
	<p>If you expand the alias in the containment tree, you see that it is related to the GetExchangeRatePortTypeAliasTemplate of the imported service.</p>
	<p>To display this relation on the diagram pane, right-click the <<SOAPAlias>> and choose Related Elements > Display Related Elements from the context menu.</p>

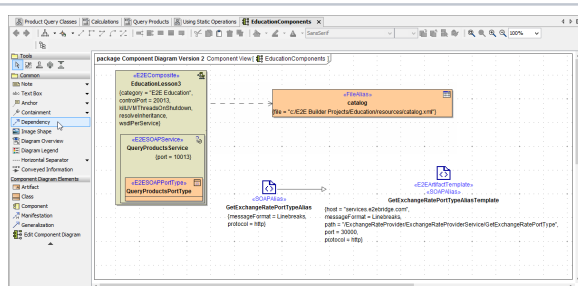


Keep the default settings in dialog **Display Related Elements** and click **OK**.



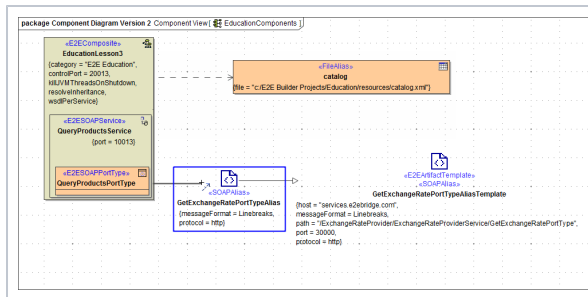
On the diagram pane, the connection between the **<<SOAPAlias>>** and the **<<E2EArtifactTemplate>>** **<<SOAPAlias>> GetExchangeRatePortTypeAliasTemplate** is now displayed.

Through their relation, the information displayed in the **<<E2EArtifactTemplate>>** such as host, path and port can be used by the **<<SOAPAlias>>**.



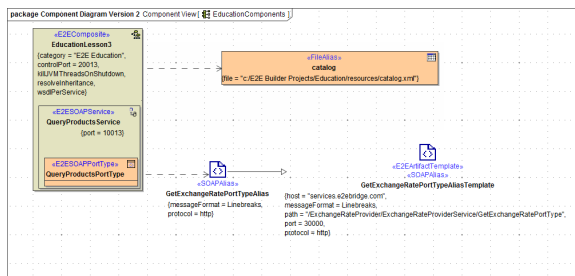
Finally, you just have to connect the **<<SOAPAlias>>** to the **<<E2EComposite>> EducationLess3** by a dependency.

Select the dependency icon from the diagram toolbar and ...

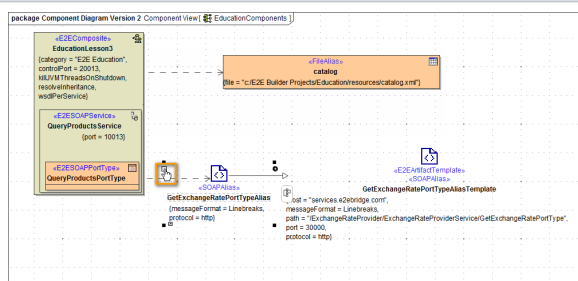


... draw a dependency from **Educatio**
nLesson3 to
the alias.

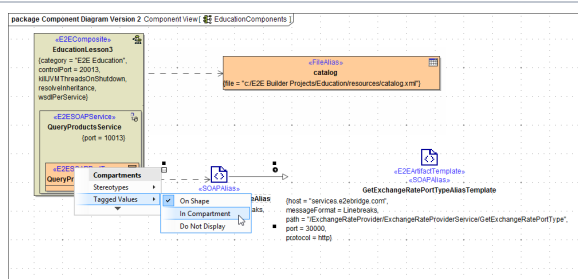
The component diagram is finished.



Note the difference between the **<<FileAlias>>** and the **<<SOAPAlias>>** artifact. MagicDraw elements can be displayed with different presentation options.

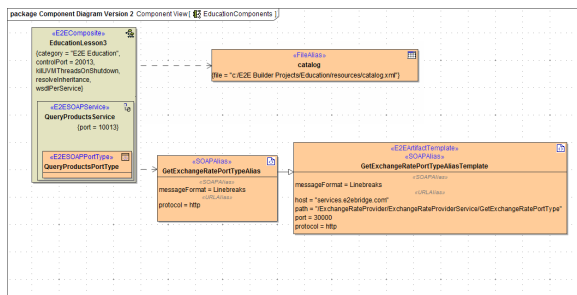


If you want to match the presentation of the **<<SOAPAlias>>** artifact to the one of the **<<FileAlias>>**, select the **<<SOAPAlias>>** artifact and click on the **□** sign in the left upper corner of the symbol.



In the context menu **Tagged Values** choose **In Compartment**. Assign the same to the **<<E2EArtifactTemplate>>**.

If you prefer the presentation of the **<<SOAPAlias>>**, apply **On Shape** to the **<<FileAlias>>** artifact.



Now, the xUML service **EducationLesson3** can be compiled.