

Activities Lesson 3.2 MD18



Outlining the Activity

After the second iteration the **QueryProductsService** will provide more output than just the list of products. First, you will extend the activity diagram **Query Products** of the port type operation.

```
graph TD
    Data --> Aliases
    Data --> BaseComponents["Base Components [E2E Bridge Base.xml]"]
    Data --> BaseType["Base Types [E2E Bridge Base.xml]"]
    Data --> ComponentView
    Data --> Overview
    Data --> ProcessTracing["Process Tracing [E2E Process Tracing.xml]"]
    Data --> Services
    Services --> GetProductService
    Services --> QueryProductsService
    QueryProductsService --> Classes
    QueryProductsService --> Ports
    Ports --> QueryProductsPortType
    QueryProductsPortType --> queryProducts["+queryProducts( userInput : Services:::"]
    queryProducts --> Calculations
    Calculations --> Calculations
    Calculations --> CreateKeywordsPattern["Create Keywords Pattern( userInput : S"]
    Calculations --> FilterFileContent["Filter File Content( userInput : SearchPa"]
    Calculations --> QueryProducts["Query Products( userInput : SearchPara"]
    Calculations --> ReadXMLFile["Read XML File( allProducts : Catalog )"]
```

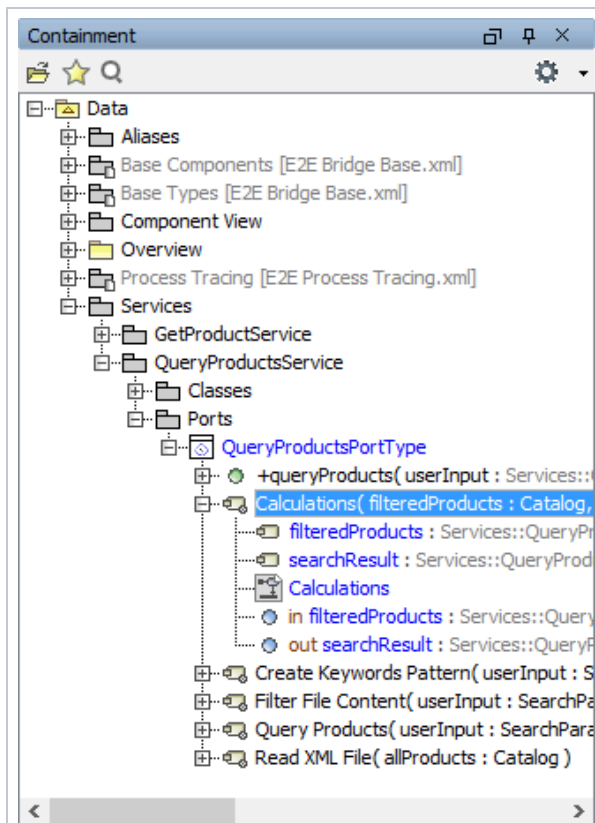
Create the new activity diagram **Calculations** in the package **Services > QueryProductsService > Ports > QueryProductsPortType**.



Implementing the Currency Calculator

On this Page:

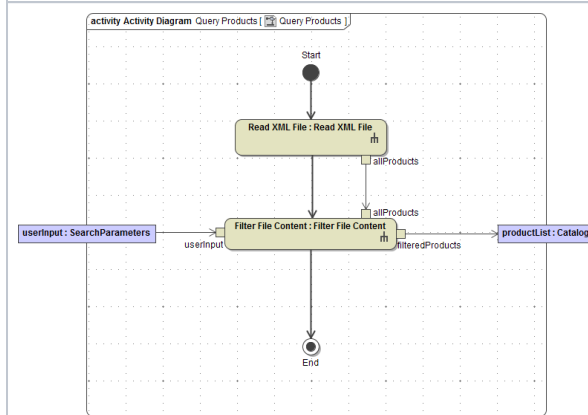
- [Outlining the Activity](#)



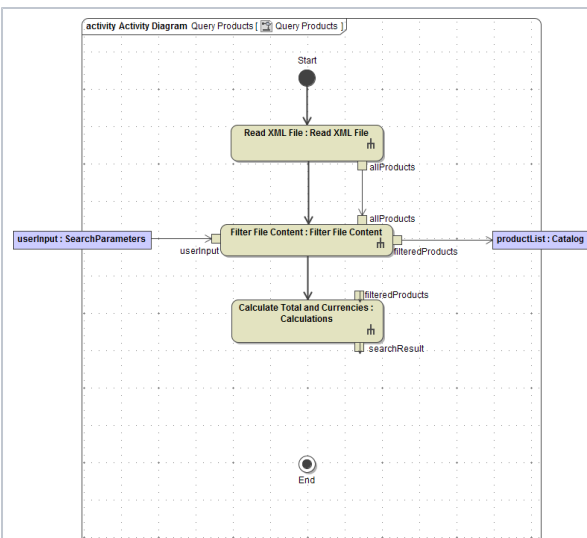
Calculations will receive the filtered data from **Filter File Content**, add some calculations to it and deliver a new search result.

Add the necessary parameters to **Calculations**:

- **filteredProducts** : Catalog, in.
- **searchResult** : SearchResult, out.



Open the activity diagram **Query Products**.

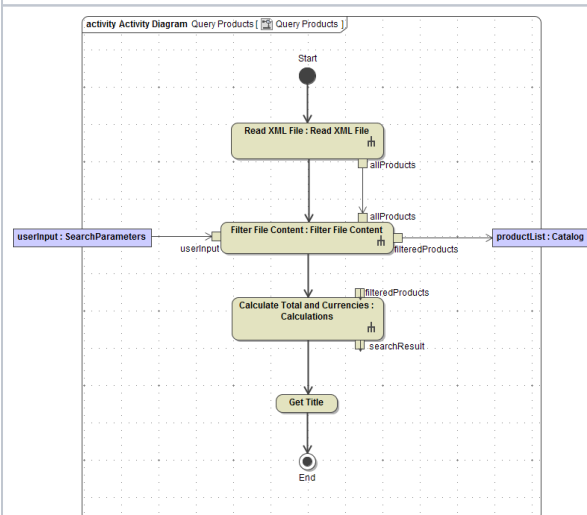


Delete the control flow between the action node **Filter File Content** and the activity final **End**.

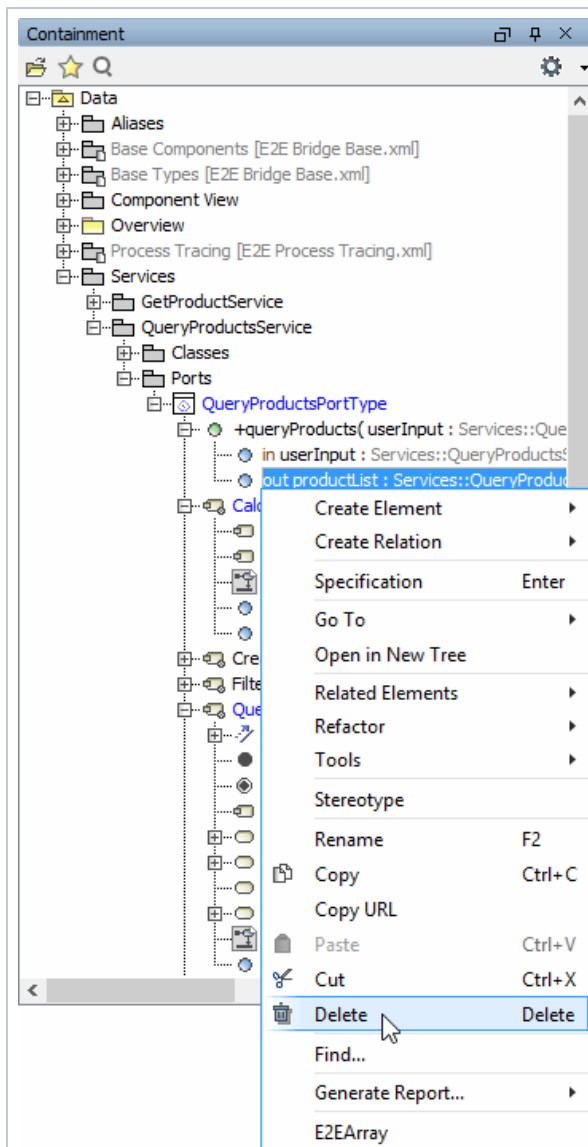
Drag and drop the activity **Calculations** on the diagram pane. Assign the name **Calculate Total and Currencies**.

Move the pins **filteredProducts** and **searchResult** on the right side of the action node.

Draw a control flow from **Filter File Content** to **Calculate Total and Currencies**.

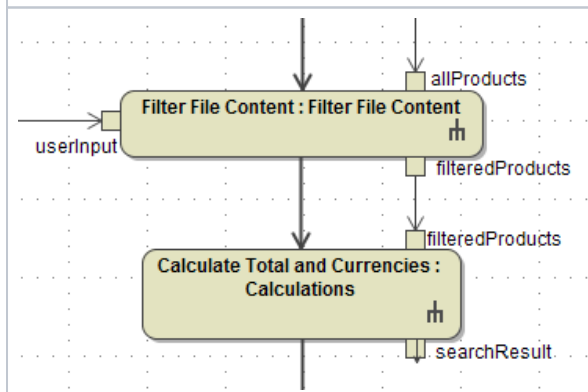


Draw the new action node **Get Title** and add the missing control flows as shown in the picture on the left.

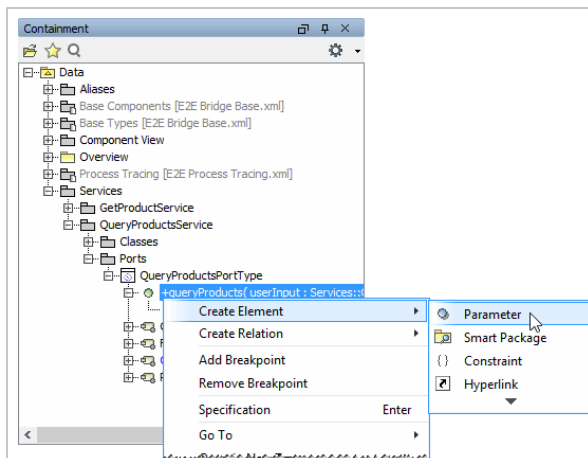


Remove the output parameter **productList** from the diagram as well as from the containment tree as it is not needed any longer.

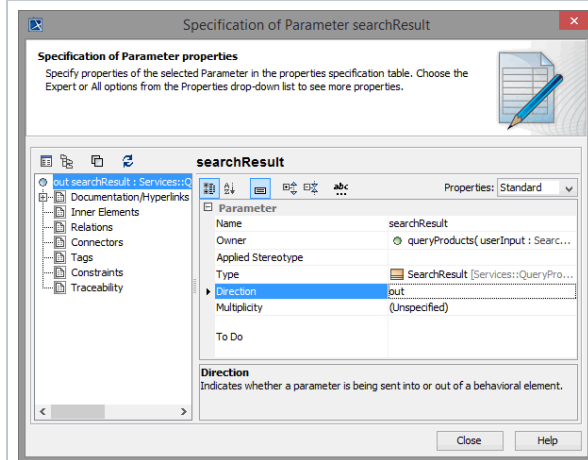
Also remove it from the port type operation **queryProducts**.



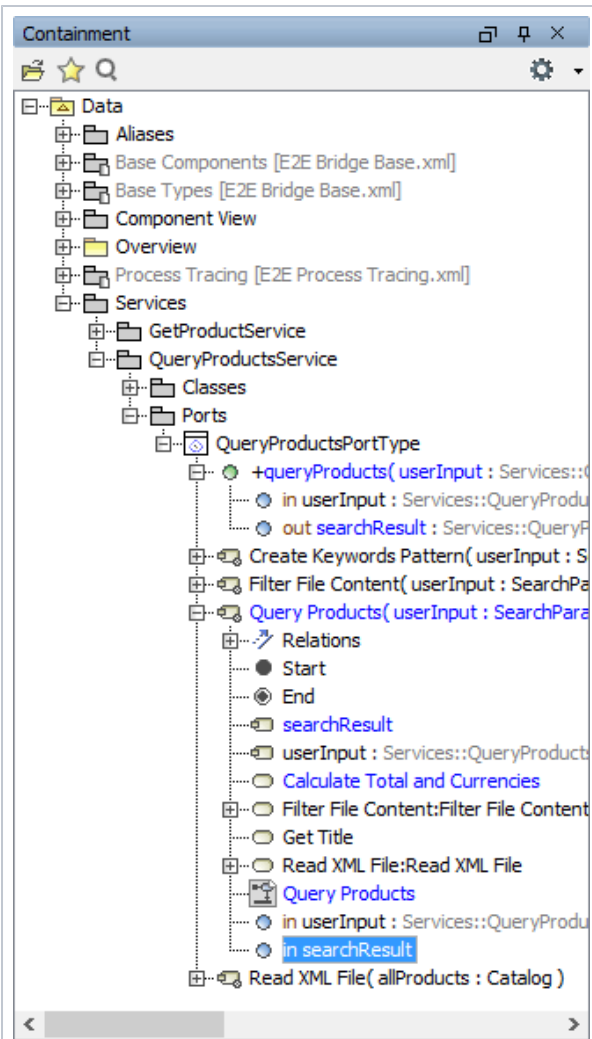
Then, move the output pin **filteredProducts** as shown on the left and connect it to the corresponding input pin of **Calculate Total and Currencies**.



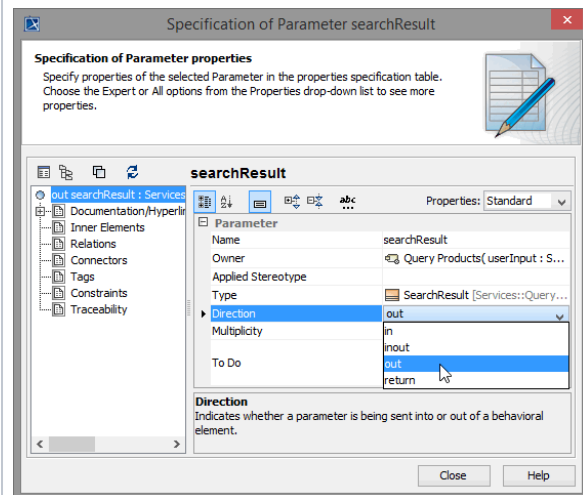
Add the new parameter **searchResult** to the port type operation **queryProducts**.



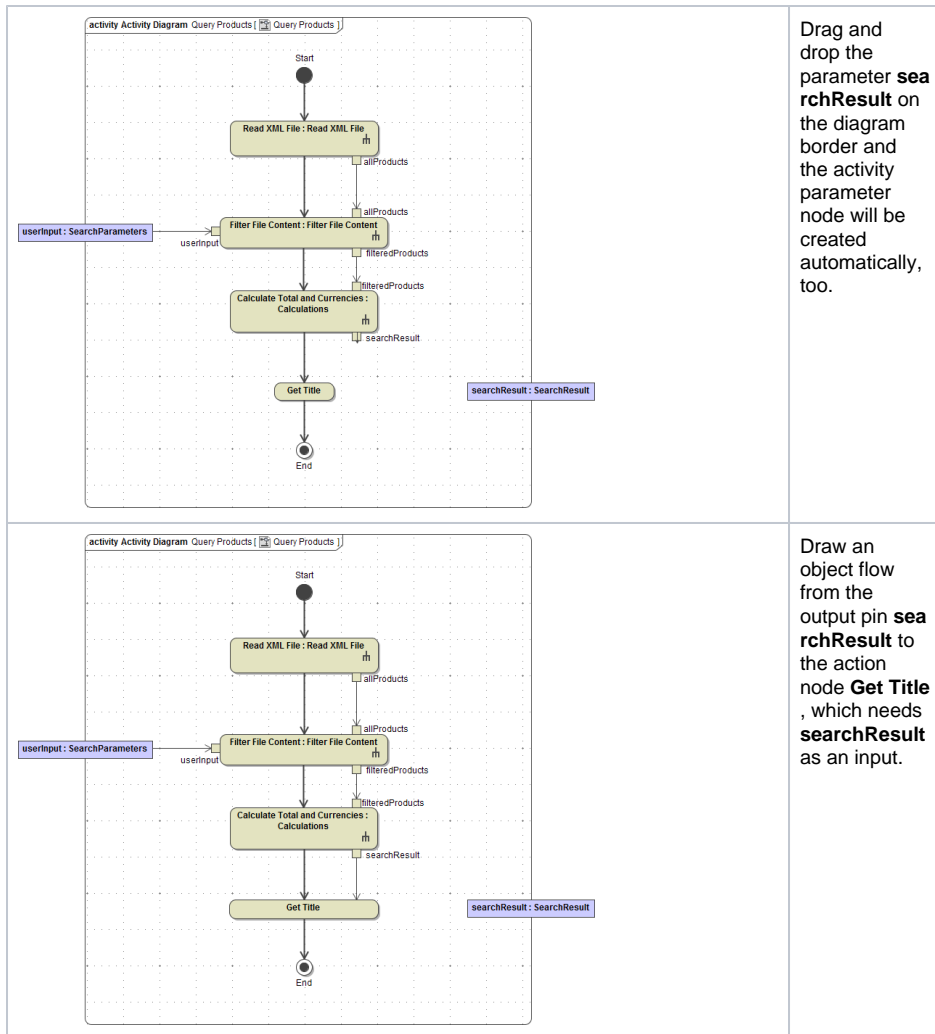
Define it as of type **SearchResult** and direction **out**.



Note that the parameter of the related activity was created automatically.

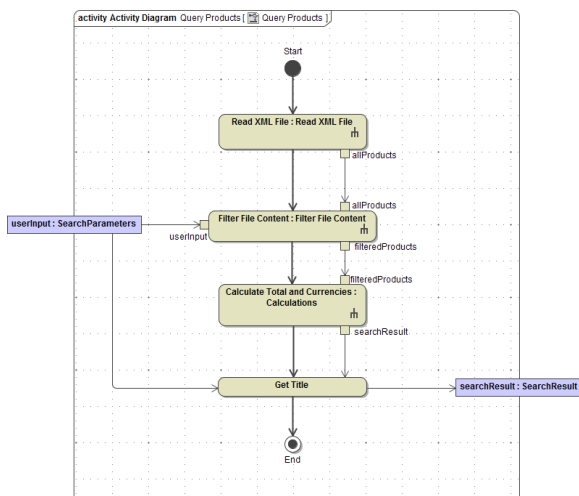


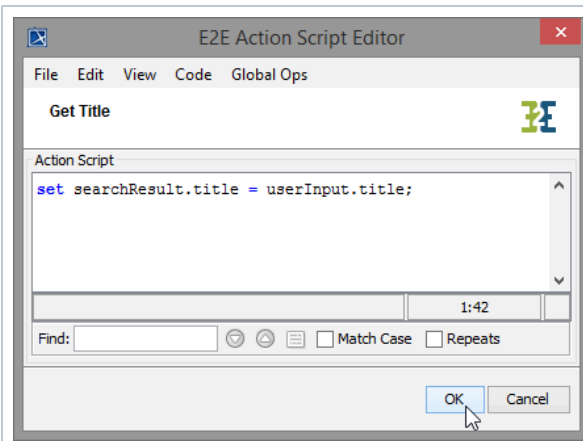
Check the type and the direction of this automatically created parameter and set it to **searchResult** and **out** if necessary.



In the last step, you will set the title to be returned in the action node **Get Title**. It will be assigned to the corresponding attribute in the output object **searchResult**. You need to set the value of attribute **title** of object **searchResult**. Therefore, the object is used as input of the action node **Get Title**. Connect the input parameter **userInput** to the action node **Get Title**.

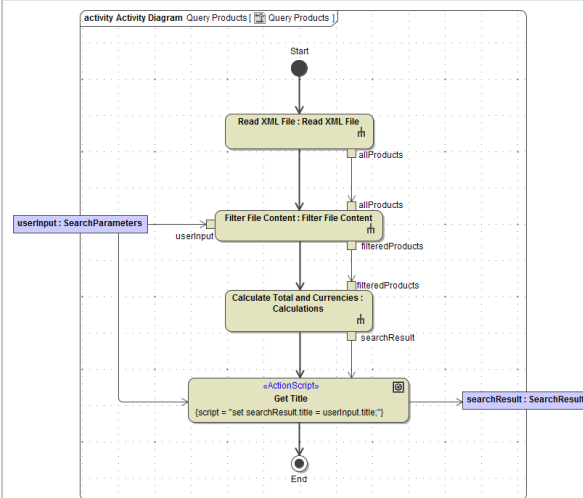
As you change an attribute of the object **searchResult**, you need to draw an object flow from the action node to the activity parameter node **searchResult**. The object will be passed to the caller, the port type operation **queryProducts**.






Finally, add the following action script to the action node **Get Title**:

```
set
searchResult
t.title =
userInput.
title;
```



The activity diagram **Query Products** is finalized.

Save  the UML model.