

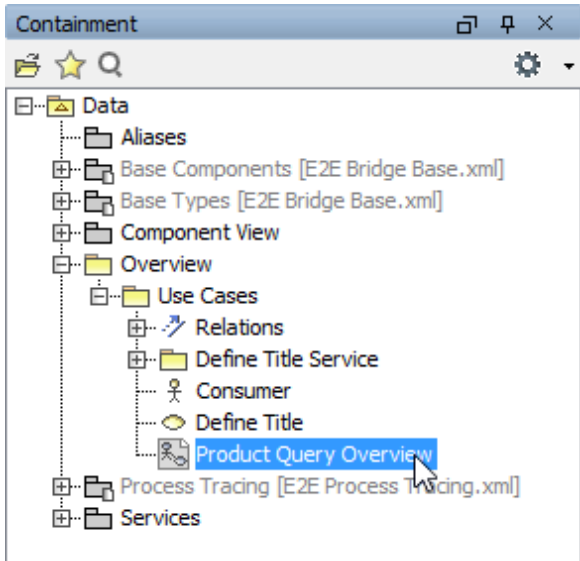
# Use Cases Lesson 2 MD18



First, you will update the use case diagrams to consider the new functionality of the Web service.

## Linking a Use Case to a Use Case Diagram

You already drew a more detailed use case diagram for the first use case **Define Title** in lesson 1. Now, you will link the use case **Define Title** to this use case diagram **Define a Title**. This facilitates navigating through the model and makes complex models easier to understand.



In the containment tree, navigate to the use case diagram **Product Query Overview** in the package **Data / Overview / Use Cases**, and double-click it to open it.

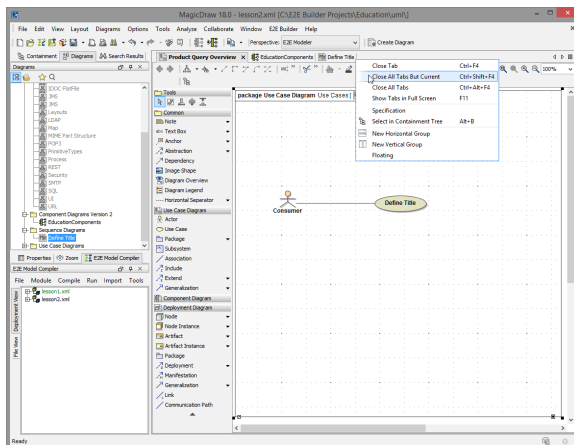


Building a New Service Structure

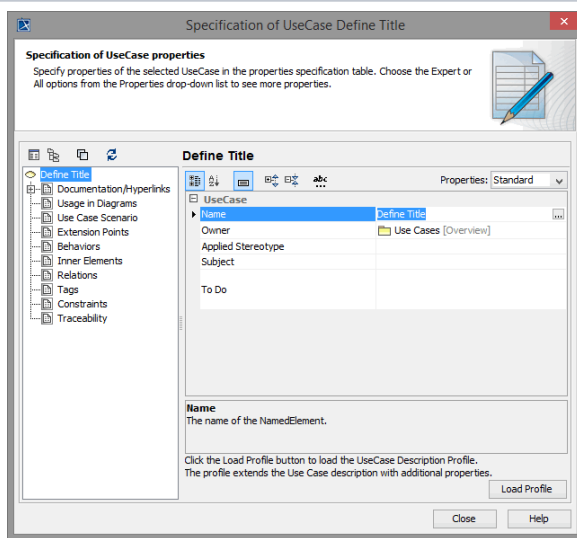
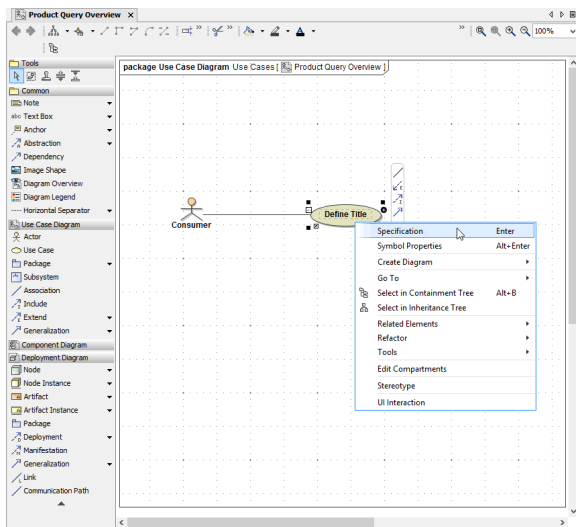
### On this Page:

- [Linking a Use Case to a Use Case Diagram](#)
- [Extending Use Case Diagram "Product Query Overview"](#)
- [Creating Use Case Diagram "Insert Product Data into List"](#)
- [Linking UML Elements via Drag & Drop](#)

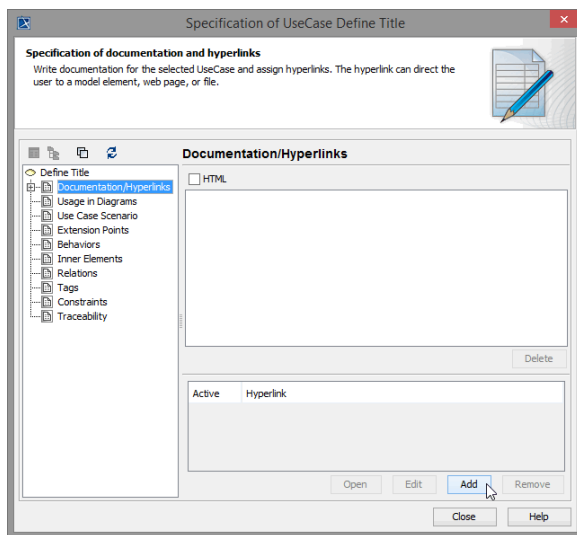
Right-click the tab of **Product Query Overview** and select **Close All Tabs But Current**. This will close all open diagrams except the use case diagram **Product Query Overview**.



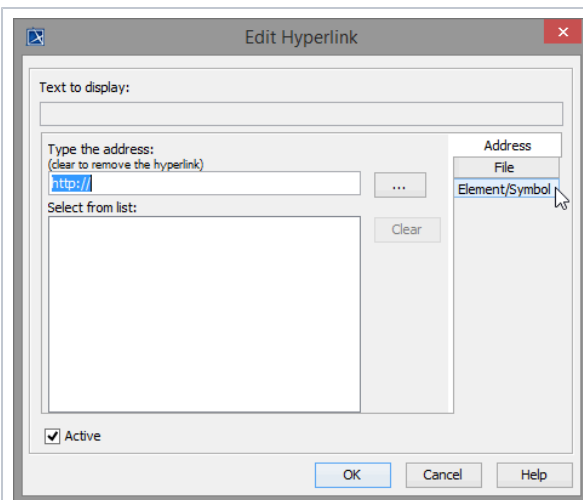
Select the use case **Define Title** with the right mouse button and choose **Specification** from the context menu as shown below.



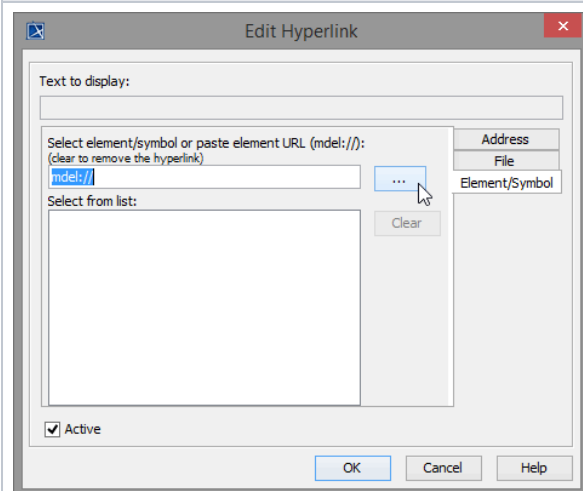
The **UseCase Specification** dialog opens. Select the entry **Documentation / Hyperlinks** in the left panel.



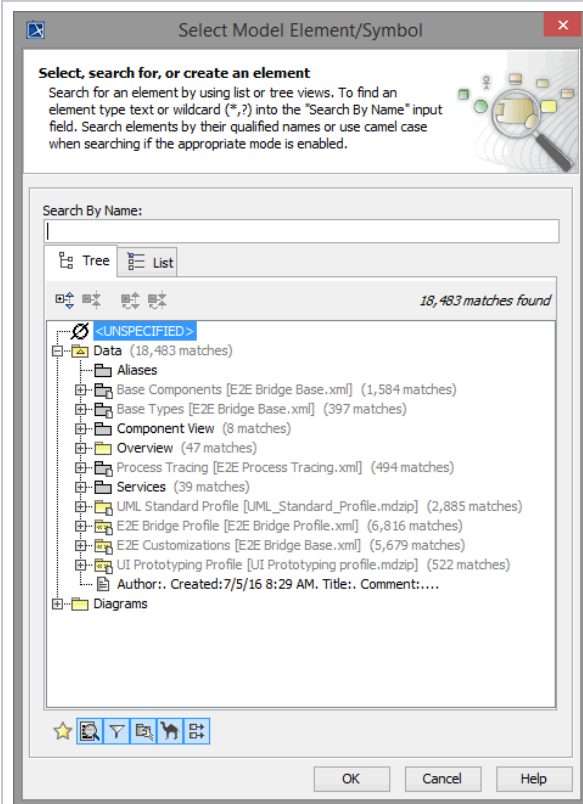
Click **Add** to insert a hyperlink.



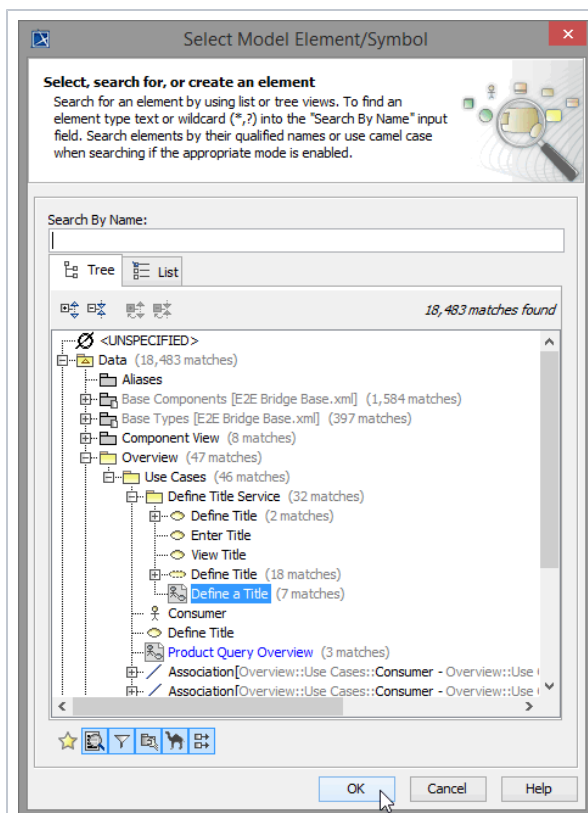
Change to the tab **Element /Symbol** to select a UML diagram.



To choose a diagram of your UML model, click the button ....

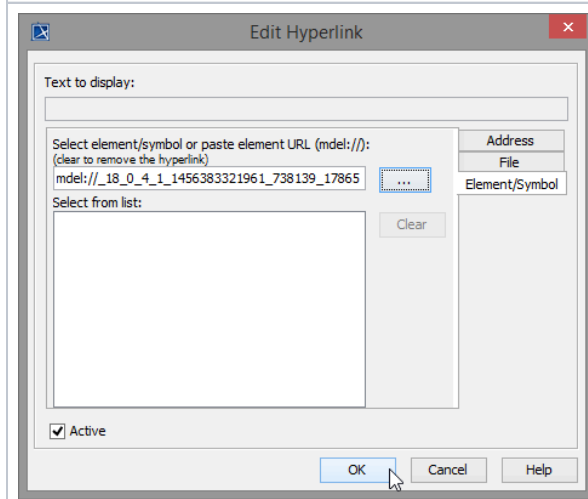


The containment tree with a collection of UML models is listed.



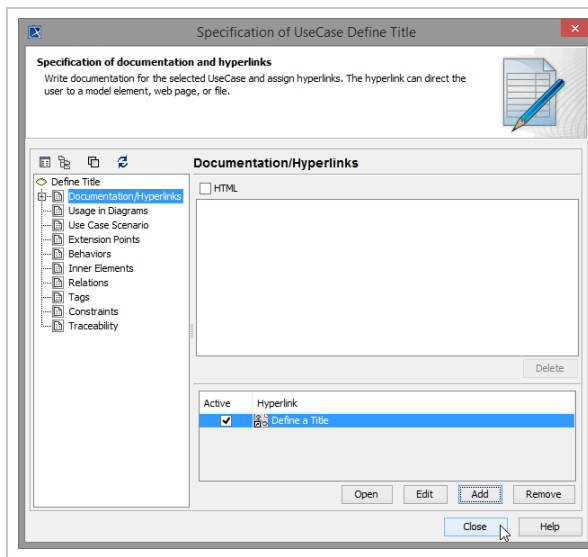
Select the use case diagram  
**Define a Title.**

Click **OK**.





The path of the selected diagram is displayed in the field **Select element /symbol or paste element URL.**

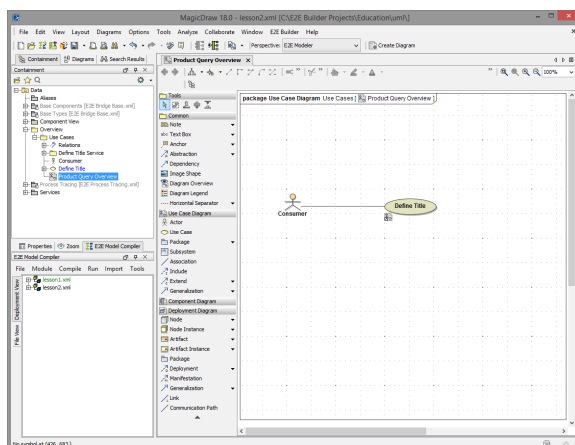
Click **OK**.



The hyperlink to the use case diagram **Define a Title** is set.

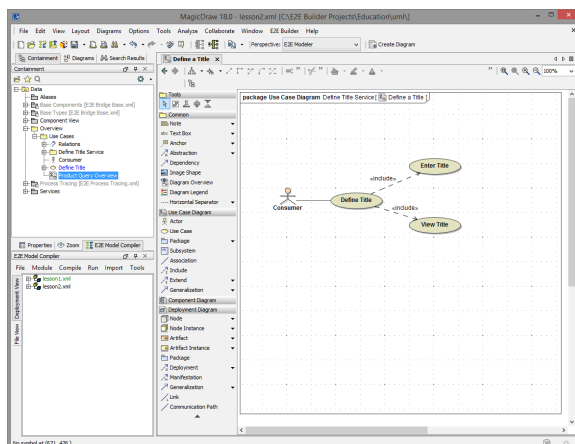
Click **Close**.

When selecting a UML element, it shows the symbol  to add a hyperlink. If a hyperlink has been added to a use case symbol, the icon of the target diagram  will be embedded in the UML symbol (if the UML element has not the focus). The use case **Define Title** is linked to use case diagram **Define a Title** now. Whenever you double-click a UML element having defined a hyperlink, the linked diagram will open:



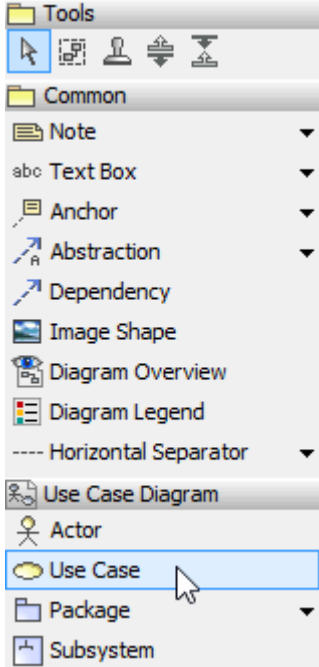
After changing any element in MagicDraw, the color of its corresponding entry in the containment tree will change to blue. When you save the model, the color will turn to black again.

Double-click the use case **Define Title** either on the diagram pane or in the containment tree in the package **Data / Overview / Use Cases**. The linked use case diagram opens:



# Extending Use Case Diagram "Product Query Overview"

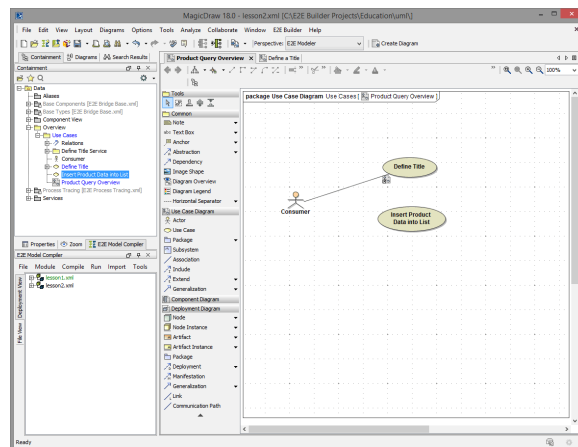
You now will extend the use case diagram **Product Query Overview** considering the additional functionality of the Web service.



The screenshot shows the UML Tools palette with the 'Use Case' tool selected. The palette is organized into sections: Tools, Common, and Use Case Diagram. The 'Use Case' tool is highlighted with a mouse cursor.

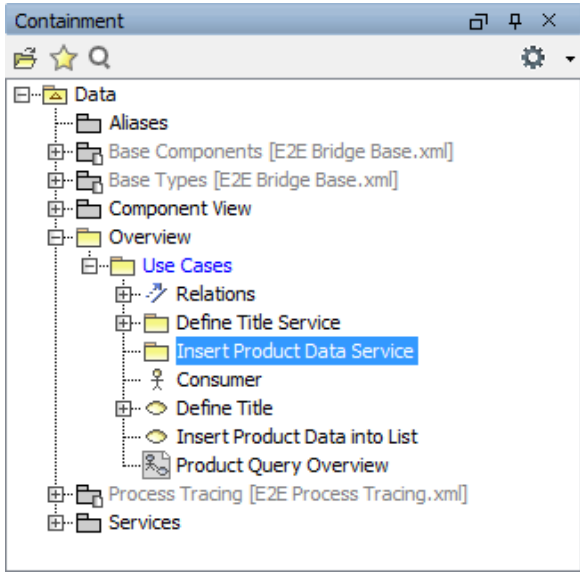
In order to draw another use case, you will use a different technique. Select the **Use Case** symbol from the diagram toolbar, place it on the diagram pane, and start immediately typing the name **Insert Product Data into List**. Then, press **Enter** to finish entering the use case name.

Rearrange the UML elements on the diagram pane as shown below:



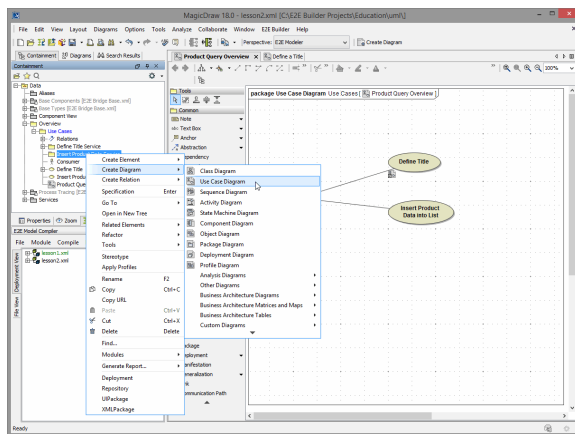
Draw an association between the actor **Consumer** and the use case **Insert Product Data into List**.

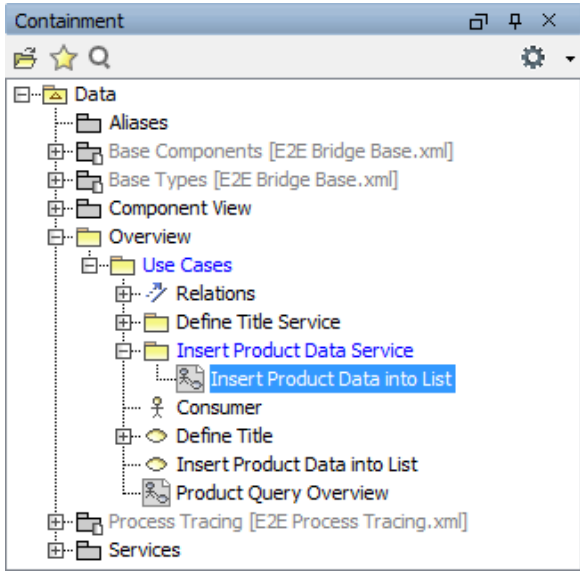




Assign the name **Insert Product Data Service**.

Select the package **Insert Product Data Service** with the right mouse button and create a new use case diagram as shown below:

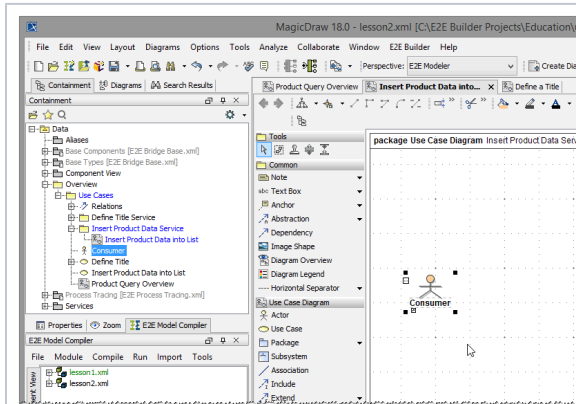
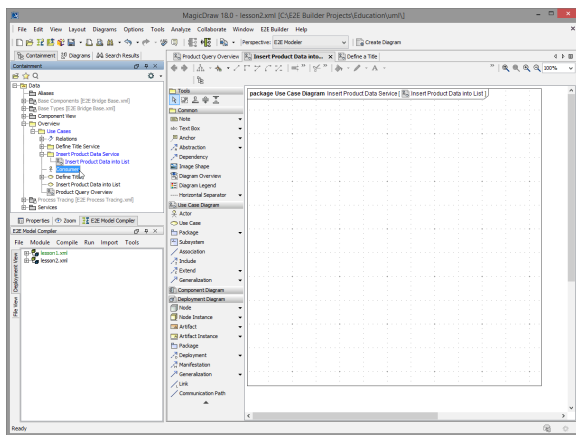




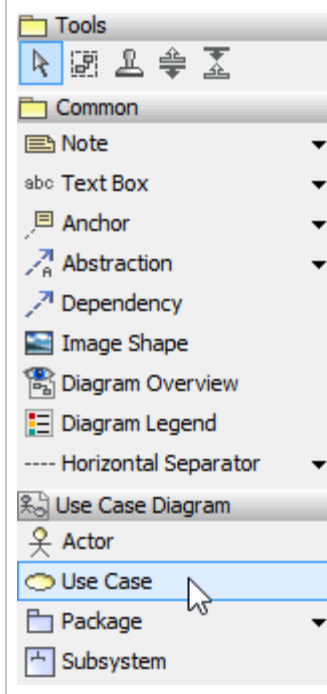
Name the use case diagram **Insert Product Data into List**.

You will now add the actor and the use cases to the new use case diagram **Insert Product Data into List**. Reuse the actor **Consumer** from package **Data / Overview / Use Cases**.



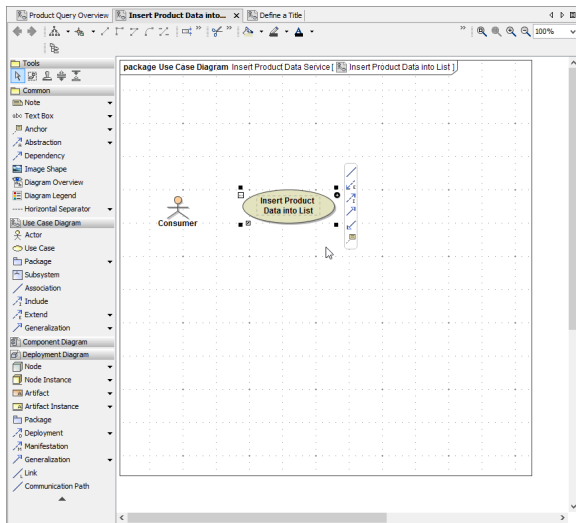


Drag and drop the actor **Consumer** onto the use case diagram **Insert Product Data into List** in the diagram pane.

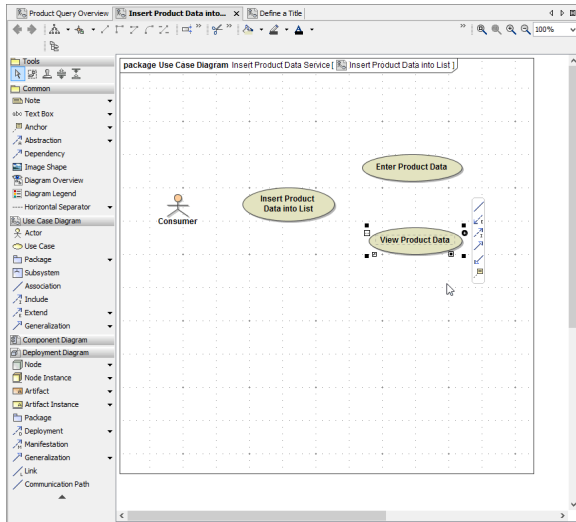


Draw the detailed use case diagram for lesson 2 by choosing the appropriate icons from the diagram toolbar.

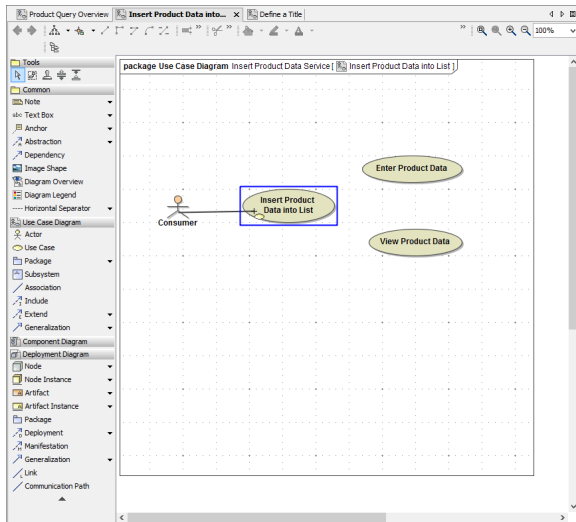
Draw a use case and name it **Insert Product Data into List**.



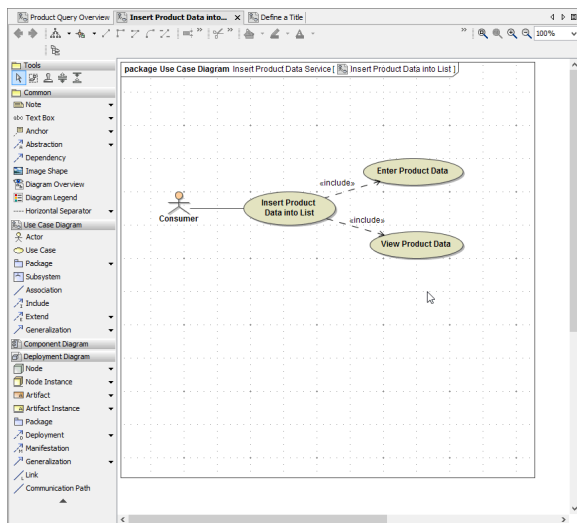
Add the use cases **Enter Product Data** and **View Product Data**.



Draw an **Association** between the actor **Consumer** and the use case **Insert Product Data into List**.



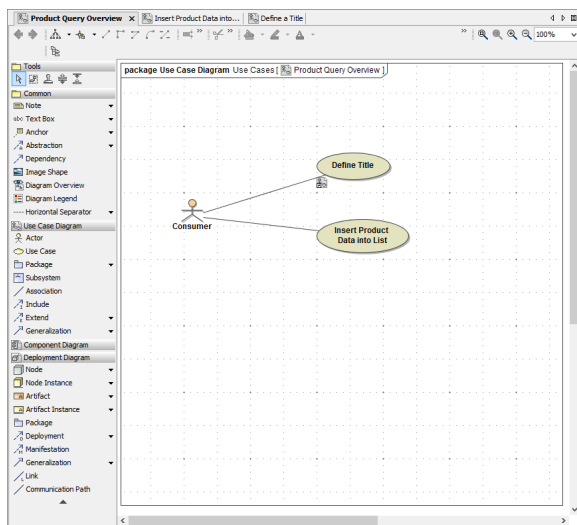
Draw **Include** relations between the use case **Insert Product Data into List** and the other use cases.

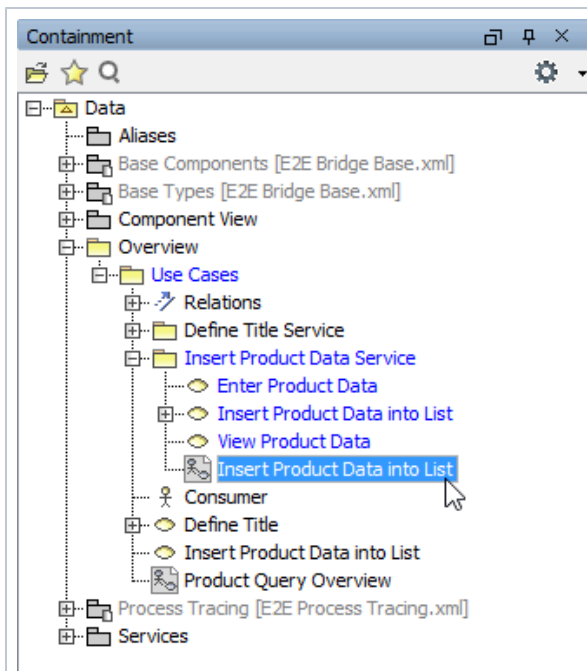


## Linking UML Elements via Drag & Drop

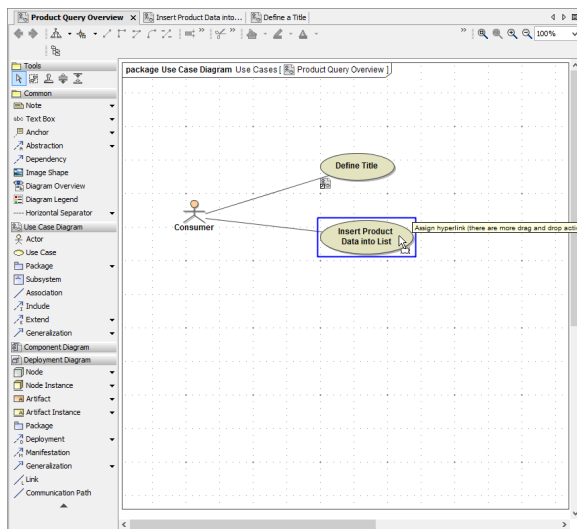
Linking UML Elements is also possible via drag & drop. You will now link the new use case diagram **Insert Product Data into List** to the corresponding use case in the overview diagram **Product Query Overview**.

Switch to the diagram **Product Query Overview**.

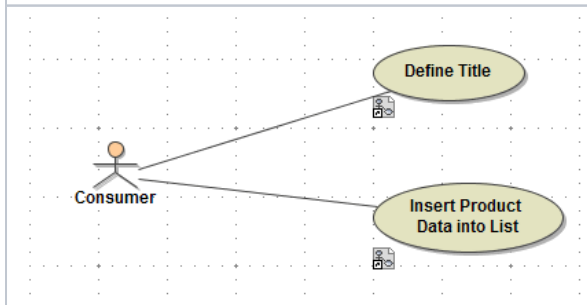




You will now use a different technique to link diagrams. In the containment tree, navigate to the use case diagram **Insert Product Data into List**.



Drag the diagram element from the containment tree to the use case **Insert Product Data into List** on the diagram pane until the UML element gets surrounded by a blue rectangle. Release the mouse button.



The use case **Insert Product Data into List** now is linked to use case diagram **Insert Product Data into List** and shows the icon.

Save the UML model.