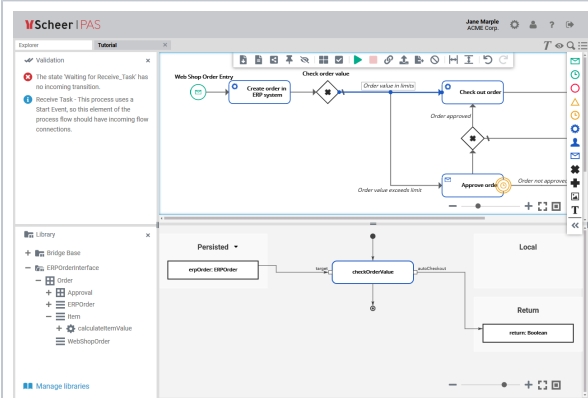


# Home

**Scheer PAS Designer** is the PAS platform's modeling tool for digitization. The easy-to-use, innovative and model-based tool allows you to create processes in BPMN 2.0 format via a graphical user interface. At the same time you can realize the technical implementation into UML by using supplied or self-created libraries. You can use the finished models without further programming as xUML microservices in containers or in the platform's integration component. The use of the Designer also boosts the work of fusion teams: The Designer enables key users, process managers, and IT managers to work simultaneously on the same process and share specific resources, so each team helps to accelerate development across the enterprise.



Your key benefits:

- Design your processes all based on BPMN 2.0 standards within a pleasant UI.
- Import out of the box libraries to use our standard based connectors for nearly 50 use cases e. g. web, database and ERP systems.
- Arrange the UI based on your needs and your work habits.

## Related Pages:

- [Getting Started With Designer](#)
- [PAS Designer User Guide](#)
- [PAS Designer Developer Guide](#)
- [PAS Designer Administration](#)

## Related Documentation:

- [Administration Guide](#)
- [Bridge User's Guide](#)

- Manage all your projects within one UI and share Designer content with other people.
- Transfer your BPMN models into a technical representation to make it executable as a container or within the platform's integration component (Bridge).



### Guidance for Designer Documentation

Creating and running services in Designer consists of several steps, all of which are explained in detail in the documentation:

Working Step in the Designer	Related Documentation
Service Development	<ul style="list-style-type: none"><li>• <a href="#">Creating Connectors</a></li><li>• <a href="#">Modeling BPMN</a></li><li>• <a href="#">Modeling Forms</a></li><li>• <a href="#">Modeling APIs</a></li><li>• <a href="#">Implementing Your Process</a></li><li>• <a href="#">Working With Libraries</a></li><li>• <a href="#">Configuring the Instance List</a></li></ul>
Service Validation and Testing	<ul style="list-style-type: none"><li>• <a href="#">Validating and Testing a Service</a></li></ul>
Service Deployment	<ul style="list-style-type: none"><li>• <a href="#">Deploying a Service</a></li></ul>
Service / Application Execution	<ul style="list-style-type: none"><li>• <a href="#">Running Designer Applications</a></li></ul>