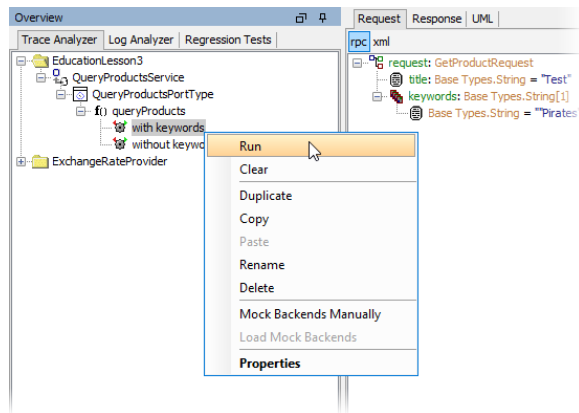


# Running a Test

Click the test case with the right mouse button and select **Run Test Case** from the context menu.



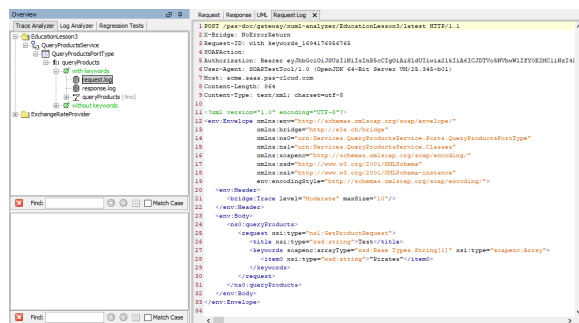
## Related Pages:

- [Inspecting the Test Case Results](#)
- [Browsing through the Execution Path of the Service](#)
- [Creating Test Cases](#)
- [Inserting Test Data](#)
- [Modifying Test Case Properties](#)
- [Importing the Service Description](#)

The color of the test case icon indicates the status of the test case:

Test Case Icon	Description
	The test case has not been run yet.
	The test case has been run, and the last run has been executed successfully.
	The test case has been run, and the last run has not been executed successfully.
	The test case has been run, and the last run exceeded the specified maximum trace size. For more details, see <a href="#">Exceeding Maximum Trace Size</a> .

To inspect the request SOAP message that was sent to the service, select the item **request.log** in the Trace Analyzer tree.



Continue by [inspecting the test case results](#) or [browsing through the execution path of the service](#).