

Fast Draw

Fast Drawing



Fast Draw allows the user to model quickly by avoiding frequent use of **Drag & Drop** functionality.

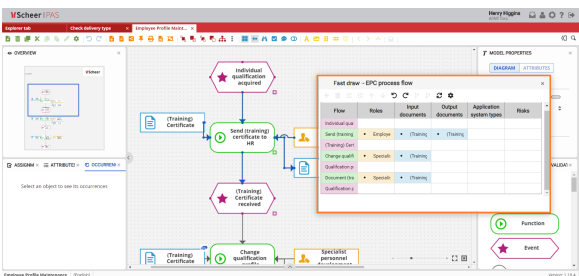
On this Page:

- [Fast Drawing](#)
- [Fast Draw Table](#)
 - [Fast Draw Table Sections](#)
 - [Inserting Condition into Model](#)

Related Pages:

- [Fast Draw Functions](#)
- [Hierarchical Models with Fast Draw](#)
- [Process Flow Models with Fast Draw](#)
- [Permissions](#)
- [Canvases](#)
- [Panels](#)
- [Model Toolbar](#)
- [Export and Import Shortcuts](#)
- [Reusing Objects](#)
- [Messaging](#)
- [Query Wizard](#)

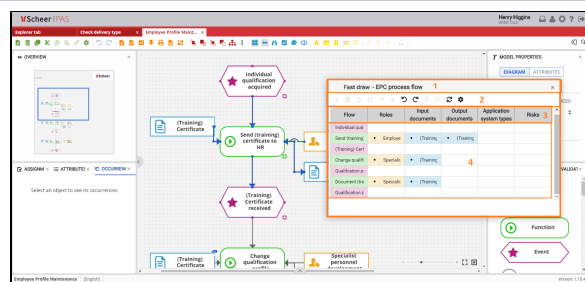
Fast Draw Table



Clicking the **Fast Draw** button within the toolbar while selecting a part of the model opens a table for further entry of objects on the model.

The **Fast Draw Table**, which opens automatically, is positioned so that the model can be seen, and by adding new rows to the table, the state of the model is automatically updated.

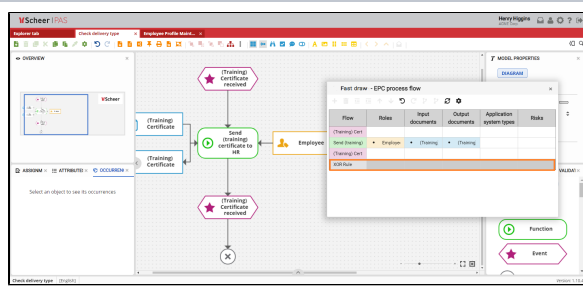
Fast Draw Table Sections



The input table consists of several units marked with numbers in the figure:

1. Model name and diagram type designation
2. Functionalities offered
3. Overview of object types with in a model type
4. Rows with an overview of objects on the model

Inserting Condition into Model



The table for entering model objects can be moved using the arrows on the keyboard. It is possible to **create new objects** or **modify existing** ones by positioning them on the appropriate cell.

Conditional branches can also be added to the model. They are marked in gray color and it is not possible to add related objects to the cells of the row marked by conditional branching.