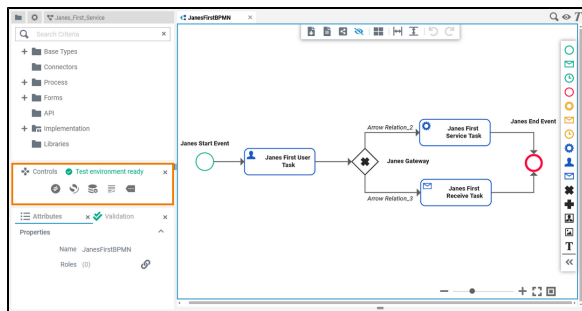


Controls Panel

In the **Controls Panel** you can find the necessary options to execute your service.



If you use the panel preset, the controls panel is displayed below the service panel. To return to the panel preset, go to the [user preferences](#) and use the button **Reset Panels**.

On this Page:






- [Controls Panel Contents](#)
 - [Controls Panel Menu](#)


Related Pages:


- [PAS Designer User Guide](#)
 - [Modeling BPMN](#)
 - [Modeling Forms](#)
 - [Implementing Your Process](#)
 - [Running Designer Applications](#)
- [PAS Designer Developer Guide](#)
 - [Pro-Code Development](#)
 - [Styling Forms With CSS](#)

✔ Refer to Customizing Editors and Panels for detailed information about panel management in general.

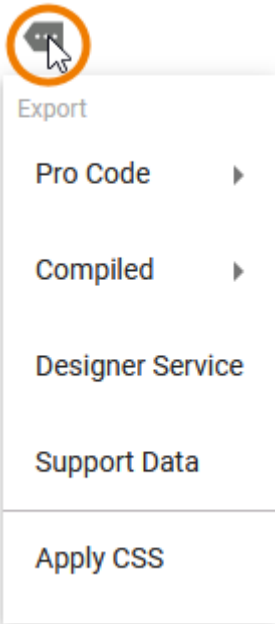
The controls panel contains several quick action icons and an additional menu:


Option	Icon	Description
Start Validation		Use this icon to trigger a validation run (compilation) of the service. This is useful if the automatic validation is disabled.
Log Analyzer		Use this icon to access the service logs of the xUML service and the Angular Application server.
Clear Compiler Cache		Use this icon to clear your Compiler cache. Clearing the Compiler cache is helpful if the validation panel shows errors you cannot solve. Using this option reinitializes the test environment.
Open Application		Use this icon to open the application in a new browser tab. You will then be able to fill your forms.
Open Menu		Use this icon to open the additional menu of the controls panel which gives you access to further options.

 Which icons are enabled depends on the deployment permissions of your user and the deployment status of the respective service.
For more information about which permissions or user profiles are necessary in each case to deploy your service to the two different deployment targets, go to [Editing the Deployment Properties](#).

 If the deployment icon is disabled, you do not have the necessary permissions to deploy a service. Please contact your PAS administrator in this case.

Controls Panel Menu

 <p>The additional menu of the controls panel gives you access to further options.</p>		
Menu Option	Description	Further Information
Pro Code (Export)	<p>If the service contains forms, you can download the source of the generated Angular app project to use the existing version for further Pro-Code development.</p> <p>Select menu option Application to download the source of the Angular app project as a .zip file.</p>	<ul style="list-style-type: none"> Changing the Generated Angular Application

	Forms Library	<p>If the service contains forms, you can download these forms as a pro code angular library. The library already contains the necessary structure and meta-information to directly start coding.</p> <p>Select menu option Forms Library to export the source of the forms as Angular library project (.zip file).</p>	<ul style="list-style-type: none"> • Developing Custom Forms in a Library
Compiled (Export)	Service	<p>Select menu option Service to export the xUML service repository as a .rep file.</p> <p>Use the export:</p> <ul style="list-style-type: none"> • if you want to deploy the repository to another system. • if you want to analyze the service with the Analyzer. <div>  <p>Make sure that you have chosen the correct deployment target in the service properties , because the Compiler provides different .rep files for integration and container deployment.</p> </div>	<ul style="list-style-type: none"> • Bridge User Guide > Deployment of xUML Services
	Library PAS 22.2	<p>Select menu option Library to export the xUML library as .xlib file. All classes and forms which are marked as to be part of the library, and all dependent classes are included.</p>	<ul style="list-style-type: none"> • Working With Libraries
Designer Service (Export)		<p>Select menu option Designer Service to export all contents of the Designer service (processes, forms and implementations) as a .zip file.</p>	<ul style="list-style-type: none"> • Exporting and Importing Explorer Contents
Support Data (Export) PAS 22.2		<p>Select menu option Support Data to export all files generated by the Compiler. Attach the exported file to any support request in case you should have problems with a service. The data helps our support team to analyze and understand errors in your service.</p>	<ul style="list-style-type: none"> • Support • Information to Include in a Support Request
Apply CSS		<p>Select menu option Apply CSS to select one or several CSS files that you want to use in your service.</p>	<ul style="list-style-type: none"> • Styling Forms With CSS • Styling Form Elements