

# Reading the Content of Directories

 This page explains the **Filesystem Adapter** in Bridge context. If you were looking for the same information regarding the [PAS Designer](#), refer to [Filesystem Adapter](#) in the Designer guide.

## On this Page:

- [Parameters of Action "readDirectory"](#)
- [Defining a "readDirectory" Action](#)

## Related Pages:

- [Catching Errors](#)

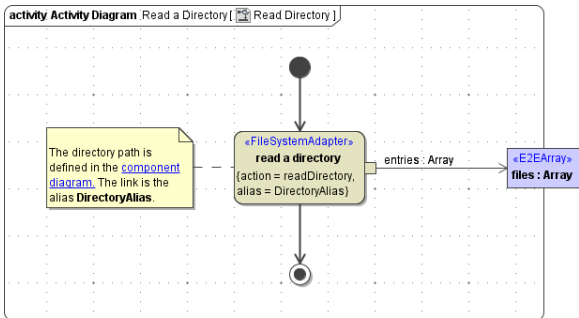
## Parameters of Action "readDirectory"

Name	Type	Direction	Description
name	String	in	Fully qualified path to the directory you want to read. <div><p>When using the Windows style with backward slashes "\" you have to be aware that you have escape this character. The escape character is also the "\".</p><p>To avoid this, use forward slashes with Windows as well.</p></div>
entries	Array of String	out	<b>readDirectory</b> returns an array of Strings containing the directory names. The array elements will not contain the directory prefix (path).

## Defining a "readDirectory" Action

To read the content of a directory with the file system adapter, you need to define a **readDirectory** action on an action having the stereotype `<<FileSystemAdapter>>`. You can do this manually (refer to [Figure: The Specification Dialog of the File System Adapter](#)) or with the help of the E2E Action Wizard (see context menu of the action node).

Figure: Reading the Content of a Directory



The directory entries are stored in an array that must be called **entries**. Each directory entry is of type **String**.

The path of the directory you want to read from is defined in the component diagram.

The link from the activity diagram to the physical information is established by an alias (in the present example: **DirectoryAlias**). See [File System Components](#) for more information on file system aliases. For information on how to access a file or directory dynamically refer to [Dynamic File System Access](#).