

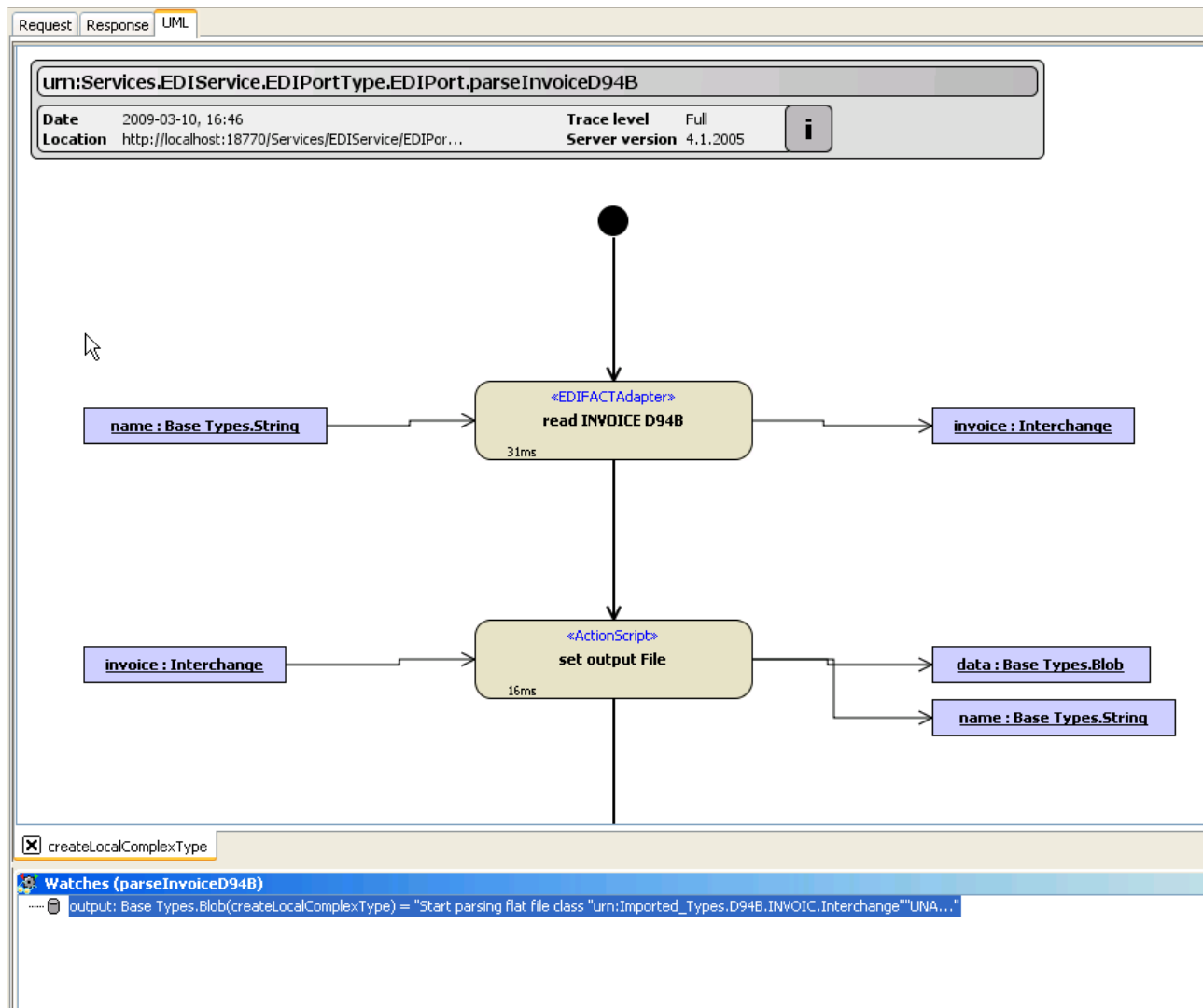
# Debugging a UN EDIFACT Adapter Call

If parsing of an EDIFACT / X12 message fails, an exception is thrown. If the exception does not identify the problem clearly, you can inspect a parsing log to get more details.

The parsing log is only available, if the service is running with trace enabled.

In the Analyzer, go to the **UML** Tab and browse through the execution path. Look for the activity diagram containing the EDIFACT/X12 Adapter action. Clicking the adapter action to display the parsing log file the **Watches** section.

Figure: Debugger Parsing EDIFACT Adapter



Open the parsing log by double-clicking on it or select **Show Value** from the context menu. A text viewer will open and show the log file.

Figure: Debugger EDIFACT Parsing Log File

E2E Text Viewer

Abc 0xFF B64 B64 0xFF XML

Start parsing flat file class "urn:Imported\_Types.D94B.INVOIC.Interchange"  
"UNA:+.?"  
Found record "UNA" (class="urn:Imported\_Types.D94B.segment.UNA"); pattern "^UNA.\*" does match  
"UNB+UNOA:1+00987654:ZZZ+1234556:ZZZ+990831:1617+000244++INVOICE"  
Skipped record "UNA" (class="urn:Imported\_Types.D94B.segment.UNA"); pattern "^UNA.\*" does not match  
Found record "UNB" (class="urn:Imported\_Types.D94B.segment.UNB"); pattern "^UNB.\*" does match  
"UNH+063297+INVOIC:D:94B:UN"  
Skipped record "UNA" (class="urn:Imported\_Types.D94B.segment.UNA"); pattern "^UNA.\*" does not match  
Skipped record "UNB" (class="urn:Imported\_Types.D94B.segment.UNB"); pattern "^UNB.\*" does not match  
Skipped group "FunctionGroup" (class="urn:Imported\_Types.D94B.INVOIC.FunctionGroup"); pattern "^UNG.\*" does not match  
Start group "Message" (class="urn:Imported\_Types.D94B.INVOIC.Message"); pattern "^UNH.\*" does match  
Found record "UNH" (class="urn:Imported\_Types.D94B.segment.UNH"); has offset 0, pattern "^UNH.\*" does match  
"BGM+380:I2::F227221O+083838158"  
Skipped record "UNH" (class="urn:Imported\_Types.D94B.segment.UNH"); offset should be 0 but is 1  
Found record "BGM" (class="urn:Imported\_Types.D94B.segment.BGM"); pattern "^BGM.\*" does match  
"DTM+9:19990831161743:203"  
Skipped record "UNH" (class="urn:Imported\_Types.D94B.segment.UNH"); offset should be 0 but is 2  
Skipped record "BGM" (class="urn:Imported\_Types.D94B.segment.BGM"); pattern "^BGM.\*" does not match  
Found record "DTM" (class="urn:Imported\_Types.D94B.segment.DTM"); pattern "^DTM.\*" does match  
"DTM+3:19990831:102"  
Skipped record "UNH" (class="urn:Imported\_Types.D94B.segment.UNH"); offset should be 0 but is 3  
Skipped record "BGM" (class="urn:Imported\_Types.D94B.segment.BGM"); pattern "^BGM.\*" does not match  
Found record "DTM" (class="urn:Imported\_Types.D94B.segment.DTM"); pattern "^DTM.\*" does match  
"DTM+4:19990825:102"  
Skipped record "UNH" (class="urn:Imported\_Types.D94B.segment.UNH"); offset should be 0 but is 4  
Skipped record "BGM" (class="urn:Imported\_Types.D94B.segment.BGM"); pattern "^BGM.\*" does not match

windows-1252