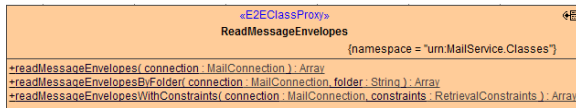


Reading Email Envelopes

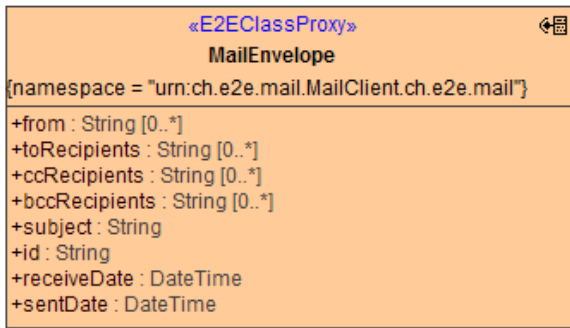
Class **ReadMessageEnvelopes** provides methods for reading message envelopes. This may be beneficial in a scenario where you first have to scan the messages on the server, before to decide which one you really want to read. In contrast to class **ReadMessages**, methods of **ReadMessageEnvelopes** do not read and transfer the whole message content (such as content and attachments, which could be rather large), but only the header fields (sender, recipient etc.). Therefore, these methods will perform better and use less memory in comparison to methods of the **ReadMessages** class.

Figure: The ReadMessageEnvelopes Class



All methods of **ReadMessageEnvelopes** return an Array of **MailEnvelope** objects:

Figure: The MailEnvelope Class

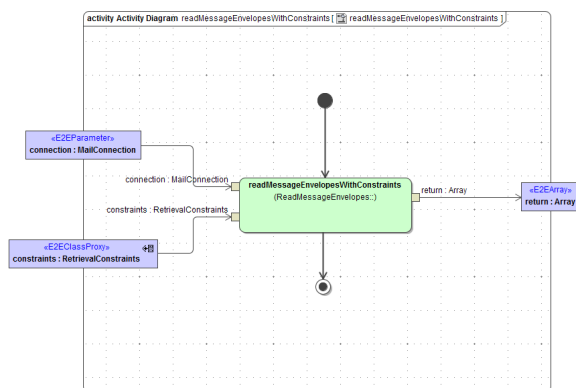


On this Page:

- [Reading Specific Message Envelopes Using Retrieval Constraints](#)
- [Reading all Message Envelopes from the Inbox Folder](#)
- [Reading Message Envelopes from an Arbitrary Folder](#)

Reading Specific Message Envelopes Using Retrieval Constraints

You can specify which message envelopes to retrieve by providing a constraints object to the **readMessageEnvelopesWithConstraints** method:

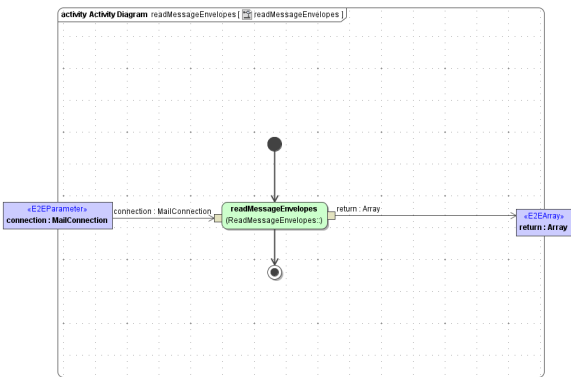


Parameters of method **readMessageEnvelopesWithConstraints** in detail:

Name	Type	Direction	Remarks
connection	MailConnection	In	Specifies connection details such as server name, protocol etc. (see Mail Connection).
constraints	RetrievalConstraints	In	Specifies constraints for mails to retrieve (see Mail Retrieval Constraints).
return	Array of MailEnvelope	Return	An array containing mail envelopes matching the constraints, or an empty array, if no emails were found.

Reading all Message Envelopes from the Inbox Folder

Method **readMessageEnvelopes** reads all message envelopes from the inbox folder:

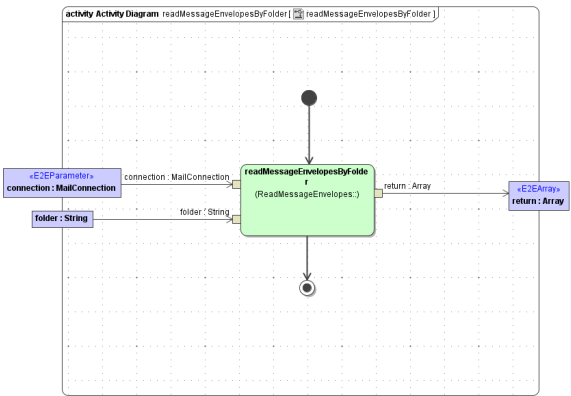


Parameters of method **readMessageEnvelopes** in detail:

Name	Type	Direction	Description
connection	MailConnection	In	Specifies connection details such as server name, protocol etc. (see Mail Connection).
return	Array of MailEnvelope	Return	An array containing mail envelopes from the inbox folder, or an empty array, if no emails were found.

Reading Message Envelopes from an Arbitrary Folder

You can read email envelopes from an arbitrary folder on the mail server by using the **readMessageEnvelopesByFolder** method:



Parameters of method **readMessageEnvelopesByFolder** in detail:

Name	Type	Direction	Description
connection	MailConnection	In	Specifies connection details such as server name, protocol etc. (see Mail Connection).
folder	String	In	Specifies the folder on the mail server.
return	Array of MailEnvelope	Return	An array containing mail envelopes from the specified folder, or an empty array, if no emails were found.