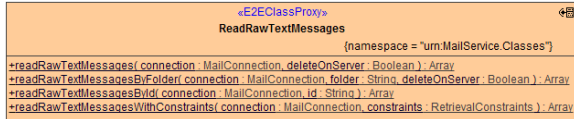


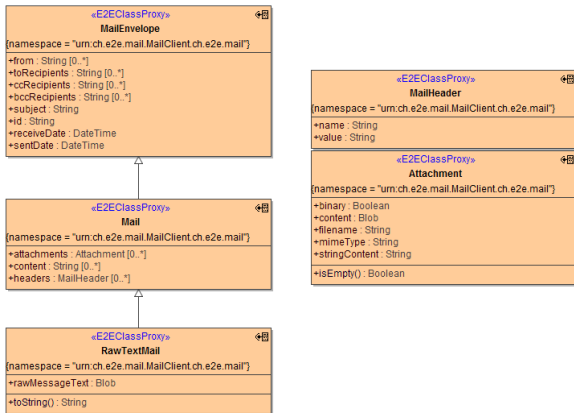
Reading Raw Text Emails

Class **ReadMessages** provides methods for reading messages from the inbox or from arbitrary folders on the server. In addition, in case of multipart/multi-content messages, the messages are parsed and the content and/or attachments are returned in appropriate array attributes of the **Mail** class. This behavior is useful in most cases, but not always. For scenarios that require access to raw (unparsed) content of the message, you should use class **ReadRawTextMessages**.

Figure: The *ReadRawTextMessages* Class



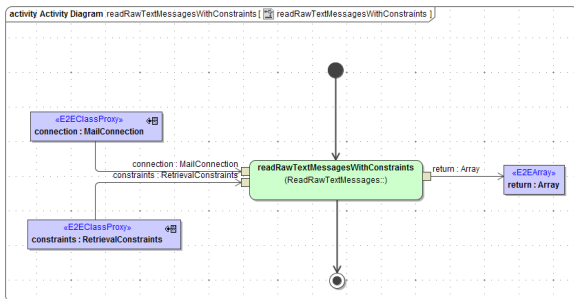
All methods of **ReadRawTextMessages** return an Array of **RawTextMessage** objects:



The **RawTextMail** class contains all attributes from **Mail** and **MailEnvelope** classes and adds an attribute for the raw message text as an instance of Blob.

Reading Specific Raw Text Messages Using Retrieval Constraints

You can specify which raw text messages to retrieve by providing a constraints object to the **readRawTextMessagesWithConstraints** method:



Parameters of method **readMessagesWithConstraints** in detail:

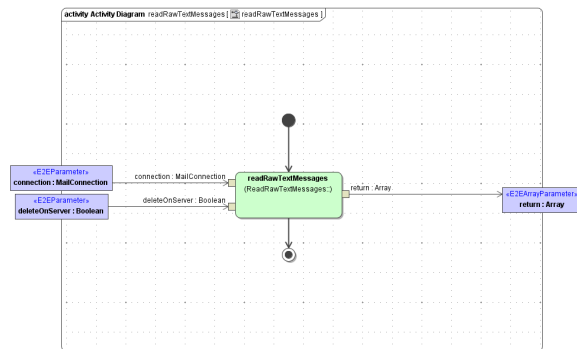
Name	Type	Direction	Description
connect ion	MailConnection	In	Specifies connection details such as server name, protocol etc. (see Mail Connection).
constrai nts	RetrievalConstr aints	In	Specifies constraints for mails to retrieve (see Mail Retrieval Constraints).
return	Array of RawTextMail	Return	An array containing emails matching the constraints, or an empty array, if no emails were found.

On this Page:

- [Reading Specific Raw Text Messages Using Retrieval Constraints](#)
- [Reading All Raw Text Messages from the Inbox](#)
- [Reading Raw Text Messages from Inbox Folder by Id](#)
- [Reading Raw Text Messages from Arbitrary Folders](#)

Reading All Raw Text Messages from the Inbox

To read all raw text messages from the inbox, use the **readRawTextMessages** method:

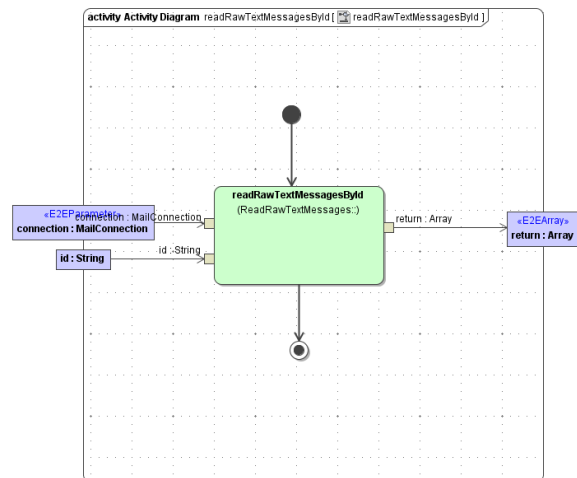


Parameters of method **readRawTextMessages** in detail:

Name	Type	Direction	Description
connection	MailConnection	In	Specifies connection details such as server name, protocol etc. (see Mail Connection).
deleteOnServer	Boolean	In	When true, messages will be deleted on server after reading.
return	Array of RawTextMail	Return	An array containing emails from the inbox folder with the corresponding message id, or an empty array, if no emails were found.

Reading Raw Text Messages from Inbox Folder by Id

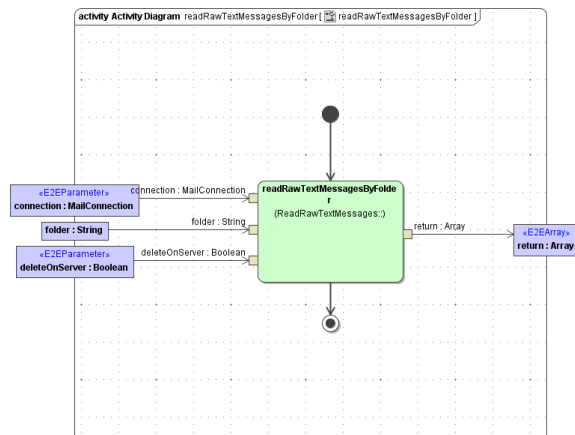
The method **readRawTextMessagesById** provides the means to read a message from the inbox folder by specifying the message id:



Name	Type	Direction	Description
connection	MailConnection	In	Specifies connection details such as server name, protocol etc. (see Mail Connection).
id	String	In	Id of the message
return	Array of RawTextMail	Return	An array containing emails from the inbox folder with the corresponding message id, or an empty array, if no emails were found.

Reading Raw Text Messages from Arbitrary Folders

You can use the **readRawTextMessagesByFolder** method to read raw text messages from arbitrary folders on the mail server:



Name	Type	Direction	Description
connection	MailConnection	In	Specifies connection details such as server name, protocol etc. (see Mail Connection).
deleteOnServer	Boolean	In	When true, messages will be deleted on server after reading.
folder	String	In	Name of the folder to read.
return	Array of RawTextMail	Return	An array containing emails from the inbox folder with the corresponding message id, or an empty array, if no emails were found.