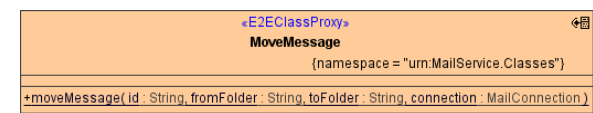


# Moving Emails

You can move messages from one folder to another through calls to methods of the **MoveMessage** class:

Figure: The MoveMessage Class

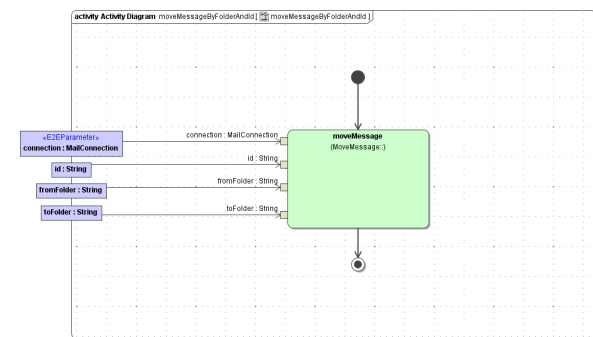


On this Page:

- [Moving a Message](#)

## Moving a Message

A message can be moved from one folder to another by specifying its ID and calling the **moveMessage** method:



Parameters of method **moveMessage** in detail:

Name	Type	Direction	Remarks
connection	MailConnection	In	Specifies connection details such as server name, protocol etc. (see <a href="#">Mail Connection</a> ).
id	String	In	Id of the message.
fromFolder	String	In	Folder in which the message is located.
toFolder	String	In	Folder to which the message should be moved.

Please note that POP3-Protocol does not support usage of folders. Therefore, the **moveMessage** will raise an exception if called when using POP3 protocol.