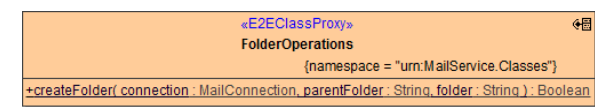


Creating a Folder

The method for creating a folder is provided by the **FolderOperations** class:

Figure: The FolderOperations Class

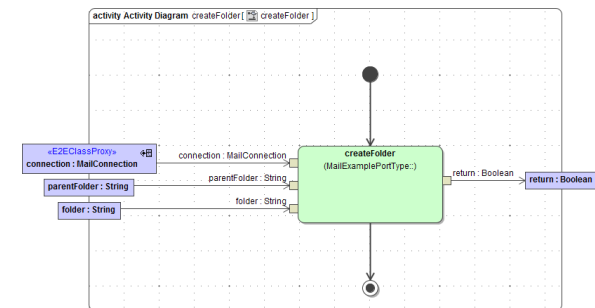


On this Page:

- Creating a folder

Creating a folder

A folder can be created by specifying its name and parent folder and calling the **createFolder** method:



Parameters of method **createFolder** in detail:

Name	Type	Direction	Description
connect ion	MailConn ection	In	Specifies connection details such as server name, protocol etc. (see Mail Connection).
parentF older	String	In	Specifies the name of the parent folder. <div>If the parent folder is omitted (NULL or empty string), the new folder is created in the default folder of the server.</div>
folder	String	In	Specifies the name of the folder.
return	Boolean	Return	True, if the folder has been created. False otherwise.