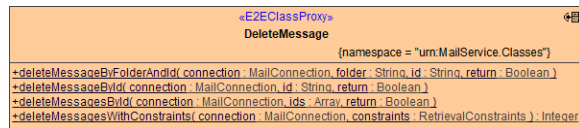


# Deleting Emails

You can delete messages through calls to methods of the **DeleteMessages** class:

Figure: The DeleteMessage Class



You can:

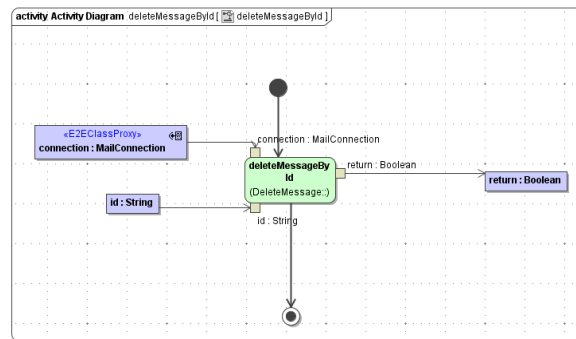
- delete specific messages from the inbox folder by message id
- delete specific messages from arbitrary folders by message id
- delete messages matching retrieval constraints (time window, subject line, unread, etc)

## On this Page:

- [Deleting a Message from the Inbox by its ID](#)
- [Deleting Multiple Messages from the Inbox by their IDs](#)
- [Deleting a Message from an Arbitrary Folder by its ID](#)
- [Deleting Specific Messages Using Retrieval Constraints](#)

## Deleting a Message from the Inbox by its ID

You can delete a message with a known id from the inbox by calling the **deleteMessageById** method:



Parameters of method **deleteMessageById** in detail:

Name	Type	Direction	Remarks
connection	MailConnection	In	Specifies connection details such as server name, protocol etc. (see <a href="#">Mail Connection</a> ).
id	String	In	Id of the message to be deleted.
return	Boolean	Return	True, if the message was found and deleted. False otherwise.

## Deleting Multiple Messages from the Inbox by their IDs

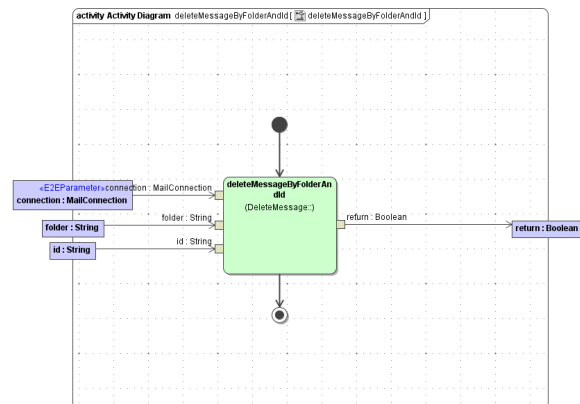
Analogous to **deleteMessageById**, you can delete multiple messages by their ids from the inbox by calling the **deleteMessagesById** method.

Parameters of method **deleteMessagesById** in detail:

Name	Type	Direction	Remarks
connection	MailConnection	In	Specifies connection details such as server name, protocol etc. (see <a href="#">Mail Connection</a> ).
ids	Array of String	In	List of ids of the messages to be deleted.
return	Boolean	Return	True, if the action has been successful. False otherwise.

## Deleting a Message from an Arbitrary Folder by its ID

You can delete a message from an arbitrary folder by its ID by calling the **deleteMessageByFolderAndId** method:

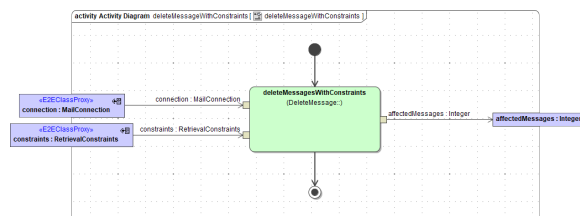


Parameters of method **deleteMessageByFolderAndId** in detail:

Name	Type	Direction	Remarks
<b>connection</b>	MailConnection	In	Specifies connection details such as server name, protocol etc. (see <a href="#">Mail Connection</a> ).
<b>folder</b>	String	In	Folder in which the message is located.
<b>id</b>	String	In	Id of the message.
<b>return</b>	Boolean	Return	True, if the message was found and deleted. False otherwise.

## Deleting Specific Messages Using Retrieval Constraints

You can specify which messages to delete by providing a constraints object to the **deleteMessagesWithConstraints** method:



Parameters of method **deleteMessageWithConstraint** in detail:

Name	Type	Direction	Remarks
<b>connection</b>	MailConnection	In	Specifies connection details such as server name, protocol etc. (see <a href="#">Mail Connection</a> ).
<b>constraints</b>	RetrievalConstraints	In	Class containing the constraints that the records to be deleted must match.
<b>affectedMessages</b>	Integer	Return	Number of messages that have been deleted.