

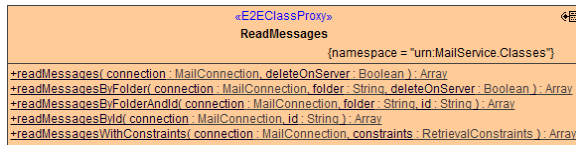
Reading Messages

Methods for reading of email messages are provided by the **ReadMessages** class. You can:

- read messages matching retrieval constraints (time window, subject line, unread, etc)
- read all messages from the inbox folder
- read specific messages from the inbox folder by message id
- read messages from arbitrary folders
- read specific messages from arbitrary folders by message id

Note that it is formally not guaranteed for message ids to be unique, not even within one folder. Therefore retrieval by id always returns an array of objects (which will most likely hold one element only).

Figure: The ReadMessages Class



All methods of this class return an array of objects of class **Mail**, which extends MailEnvelope and retrieves headers, content, and (multipart) attachments in addition.

Figure: The Mail Class

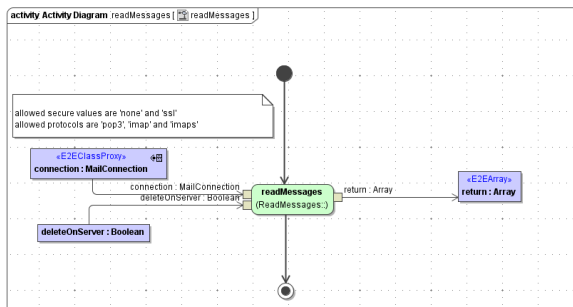


On this Page:

- [Reading All Messages From the Inbox](#)
- [Reading Specific Messages from the Inbox Folder by Id](#)
- [Reading Messages From Arbitrary Folders](#)
- [Reading Specific Messages From Arbitrary Folders by Id](#)
- [Reading Specific Messages Using Retrieval Constraints](#)

Reading All Messages From the Inbox

The following diagram demonstrates how to read all emails from the inbox:

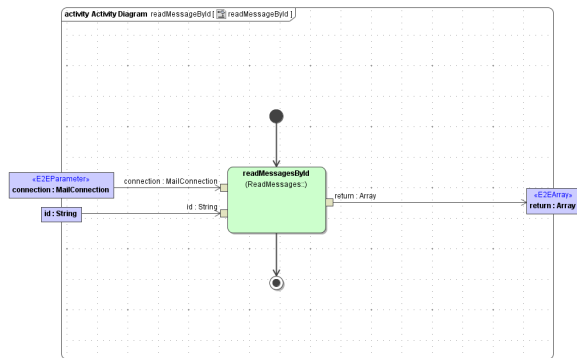


Parameters of method **readMessages** in detail:

Name	Type	Direction	Description
connection	MailConnection	In	Specifies connection details such as server name, protocol etc. (see Mail Connection).
deleteOnServer	Boolean	In	When true, messages will be deleted on server after reading.
return	Array of Mail	Return	An array containing emails from the inbox folder with the corresponding message id, or an empty array, if no emails were found.

Reading Specific Messages from the Inbox Folder by Id

Email messages can be accessed by their id through the **readMessagesById** method:

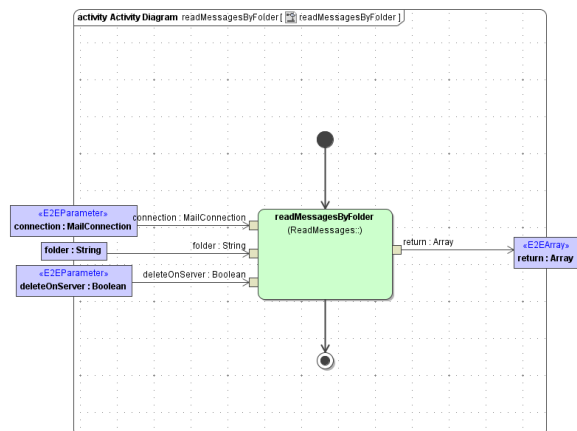


Parameters of method **readMessagesById** in detail:

Name	Type	Direction	Description
connect ion	MailCon nection	In	Specifies connection details such as server name, protocol etc. (see Mail Connection).
id	String	In	Id of the message.
return	Array of Mail	Return	An array containing emails from the inbox folder with the corresponding message id, or an empty array, if no emails were found.

Reading Messages From Arbitrary Folders

In addition to inbox folder, arbitrary folders on the mail server can be read with the **readMessagesByFolder** method:

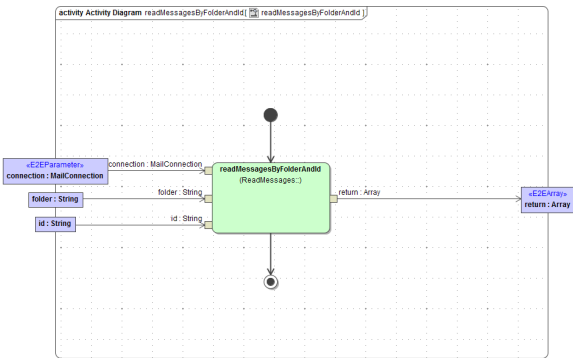


Parameters of method **readMessagesByFolder** in detail:

Name	Type	Direction	Description
connecti on	MailCon nection	In	Specifies connection details such as server name, protocol etc. (see Mail Connection).
folder	String	In	Name of the folder to read.
deleteOn Server	Boolean	In	When true, messages will be deleted on server after reading.
return	Array of Mail	Return	An array containing emails from the inbox folder with the corresponding message id, or an empty array, if no emails were found.

Reading Specific Messages From Arbitrary Folders by Id

In contrast to reading all messages from a folder, you can access a specific message from a folder by specifying its id and calling the **readMessagesByFolderAndId** method:

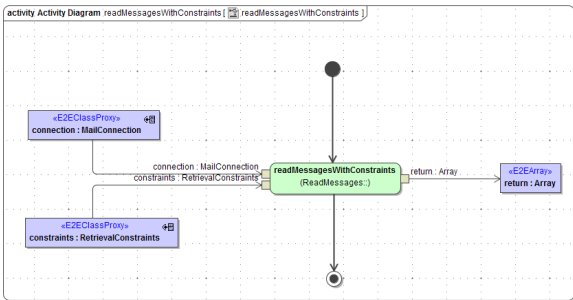


Parameters of method **readMessagesByFolderAndId** in detail:

Name	Type	Direction	Description
connection	MailConnection	In	Specifies connection details such as server name, protocol etc. (see Mail Connection).
id	String	In	Id of the message.
folder	String	In	Folder, in which the message with the specified id is located.
return	Array of Mail	Return	An array containing emails from the inbox folder with the corresponding message id, or an empty array, if no emails were found.

Reading Specific Messages Using Retrieval Constraints

You can specify which messages to retrieve by providing a constraints object to the **readMessagesWithConstraints** method:



Parameters of method **readMessagesWithConstraints** in detail:

Name	Type	Direction	Description
connection	MailConnection	In	Specifies connection details such as server name, protocol etc. (see Mail Connection).
constraints	RetrievalConstraints	In	Specifies constraints for mails to retrieve (see Mail Retrieval Constraints).
return	Array of Mail	Return	An array containing emails from the inbox folder with the corresponding message id, or an empty array, if no emails were found.