

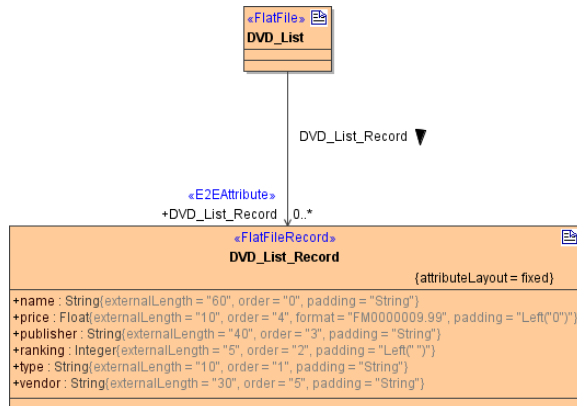
# Defining a Simple Flat File Record



This page explains the **Flat File Adapter** in Bridge context. If you were looking for the same information regarding the **PAS Designer**, refer to [Flat File Adapter](#) in the Designer guide.

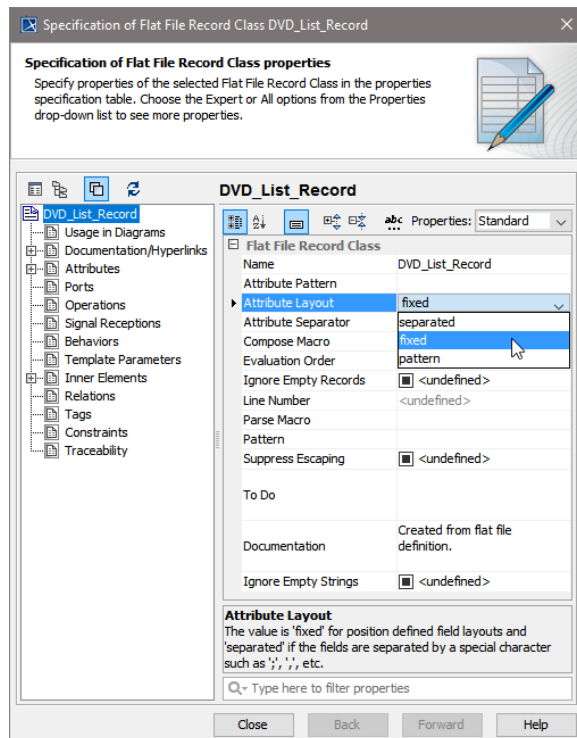
Generally, any flat file record is defined by a class of stereotype **<<FlatFileRecord>>**. All flat file records are part of a class structure that has a **<<FlatFile>>** class being the root element, for example:

Figure: Flat File Record Definition



A **<<FlatFileRecord>>** needs the mandatory tagged value **attributeLayout**. You can choose between **fixed**, **separated** and **pattern**:

Figure: Flat File Class - Definition of the Attribute Layout



If you choose **separated**, you need to specify an **Attribute Separator**, because this tag defines the character sequence separating the record fields. Any character or literal placeholder is valid. For literal placeholders see [Flat File Placeholders](#).

If you choose **pattern**, you need to specify an **Attribute Pattern**, because this tag defines the pattern that is used to separate the record fields. Refer to xxxxxx for more information and an example explaining attribute patterns.

For the definition of the additional optional tagged values see [Flat File Record Settings](#).

## On this Page:

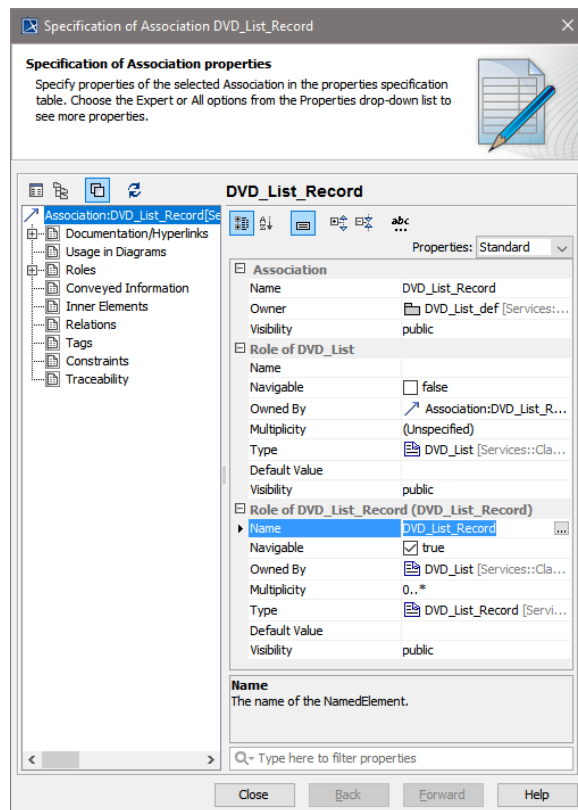
- [Defining Record Fields](#)

## Related Pages:

- [Flat File Placeholders](#)
- [Defining a Flat File](#)

Each <<FlatFileRecord>> class may have associations to other <<FlatFileRecord>> classes. In this case, the association end needs a name and multiplicity. To set these values open the **Specification** menu of the association:

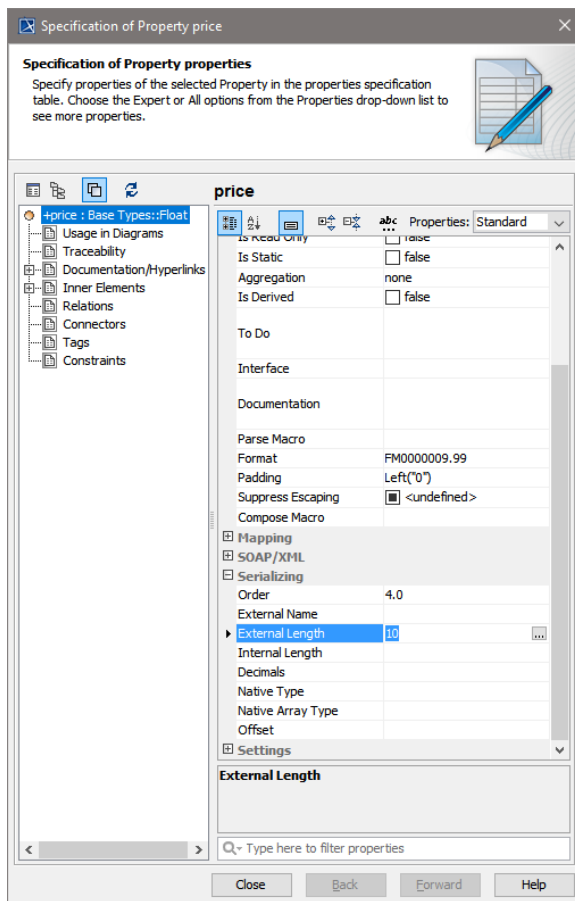
Figure: Association Specification



## Defining Record Fields

The mapping from a record field to a class attribute is defined in additional settings (tagged values) on the class attributes, e.g.:

Figure: Attribute Specification



To see the appropriate tags, make sure that stereotype `<<FlatFileAttribute>>` is applied. This stereotype is inherited from `<<E2EAttribute>>`, so you can use all tagged values from `<<E2EAttribute>>`, too. For records having a **fixed** attribute layout, specify the following mandatory tagged values:

- **externalLength** defines the size of the attribute in the file in characters.
- **order** defines the relative position of the attribute within the record for parsing and composing.

To make all the attribute settings visible in the class diagram, activate the checkbox **Show Attributes Properties** to true. This setting is in the attributes section in the **Symbol(s) Properties** (shortcut **ALT-Enter**) dialog.