

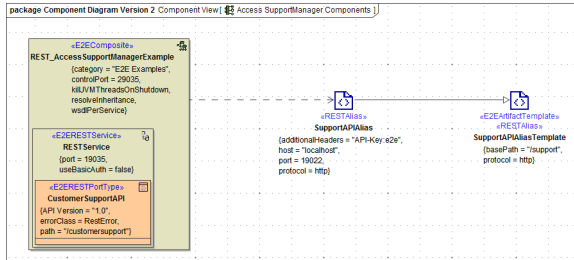
Setting REST Request Options



This page explains the **REST Adapter** in Bridge context. If you were looking for the same information regarding the **PAS Designer**, refer to **REST Adapter** in the Designer guide.

Using the REST Adapter, you can overwrite the settings coming from the component diagram dynamically.

Figure: REST Adapter Components

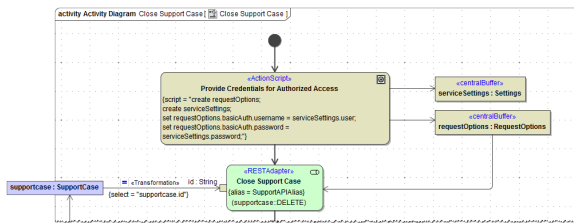


You can do this by

- creating an object of type **RequestOptions**, ...
- setting the attributes and ...
- providing this to the adapter call.

The figure below shows an example adapter call with request options.

Figure: Setting the Request Options Dynamically



Overview of Request Options Attributes and Elements

Attribute	Type	Description	Values /Example
additionalHeaders	Array of HeaderField	All REST request header fields as an array of HeaderField classes containing name/value pairs.	
options	Array of Option	Specify native cURL options as listed in Setting cURL Options on the URL Adapter . Use one of the following syntax rules: <ul style="list-style-type: none">• values separated by ' , ' in one line• values separated by ' ' in one line• list of tagged values	
ssl	SSL	Use this parameter to supply SSL information.	
proxy	Proxy	Use this parameter to supply necessary proxy information.	
additionalQueryParameters	Array of Parameter	Use this parameter to provide additional query parameters to the REST service call.	
followRedirects	Integer	Specify here the maximum number of redirects to follow.	any integer
basicAuth	Authentication	This parameter provides an object of type Authentication containing the user and the password.	
basePath	String	Overwrite here the base path of the REST service.	a valid path, e.g. /support
host	String	Overwrite here the host running the REST service that has been defined in the component diagram.	

On this Page:

- [Overview of Request Options Attributes and Elements](#)

port	Integer	Overwrite here the port through which the REST service is accessible.	
protocol	String	Overwrite here the protocol through which the REST service is accessible.	http , https
ignoreHttpErrors	Boolean	If true, HTTP error codes >= 400 will not cause an exception in the model. This implies, that the response body is accessible even if HTTP errors occur. Default value is true.	true / false
jsonComposerOptions	ComposerOptions	Use this parameter to specify JSON composer options on the REST call. You can use these options to e.g. overwrite jsonKeepNulls from the REST alias.	