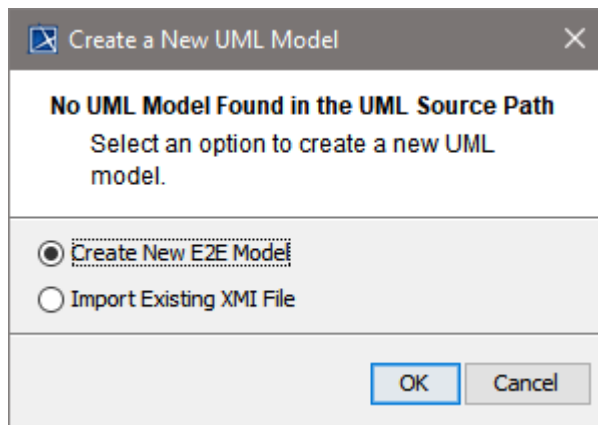
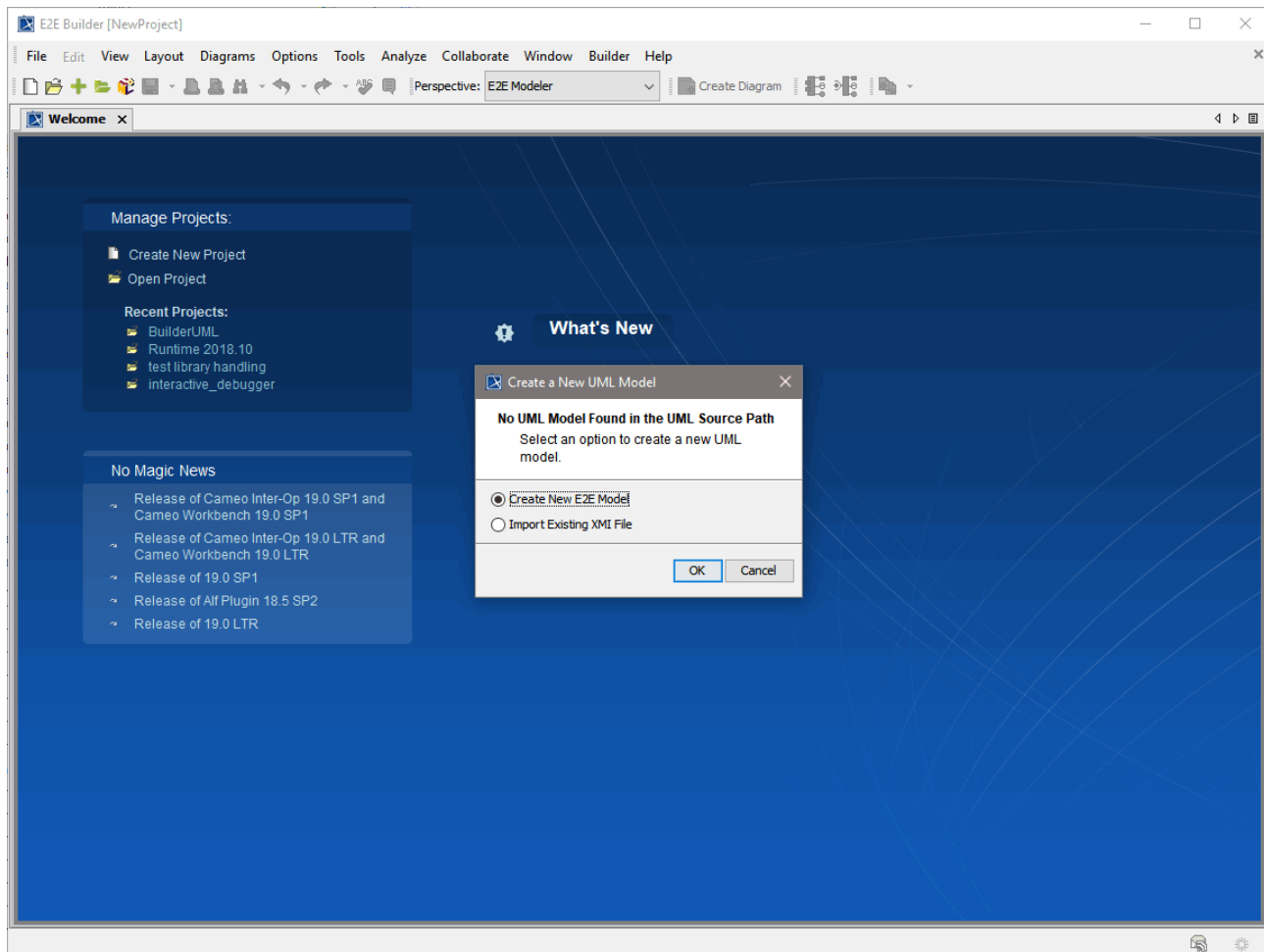
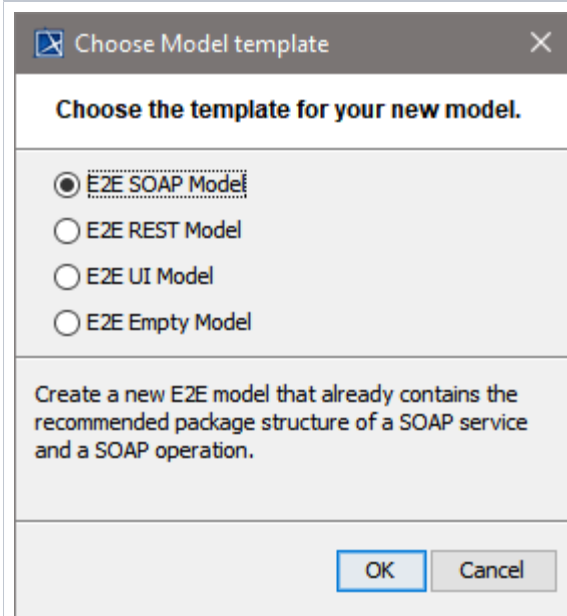


xUML Service Template

If the Builder project you are trying to open contains no UML model in the UML source path (or if you are creating a new Builder project), the Builder asks you to create or import an XML file.

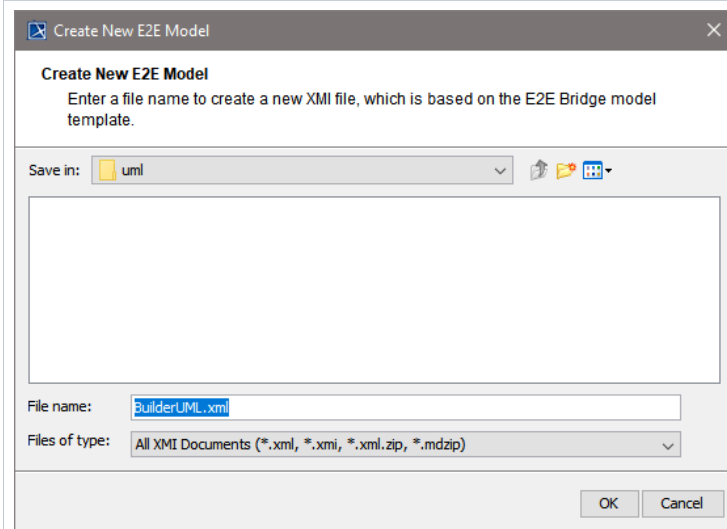


If you want to build a UML model from scratch, choose option **Create New E2E Model**. The Builder then will create a new model from an xUML service template.



The Builder provides several templates for different purposes. Each template contains predefined UML elements that are necessary to create the corresponding services with the Bridge. It also provides a default package structure for your services and a frontend interface as a starting point.
The empty model template contains the E2E profile and base modules.

Select a template (e.g. **E2E SOAP Model**) and click **OK**.



After having created a new model from a template, the new XML file will be ready to work with. Replace the suggested file name by a descriptive name (e.g. **myFirstUMLmodel**).

The new XMI file **myFirstUMLmodel.xml** containing the UML model has been saved in the Builder project **Example** and is displayed in MagicDraw.

