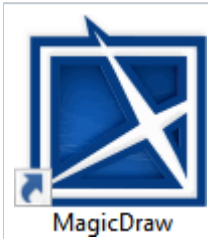
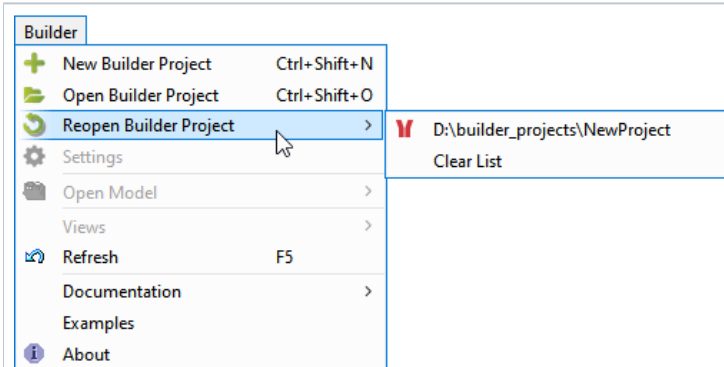


Starting the Builder After an Update

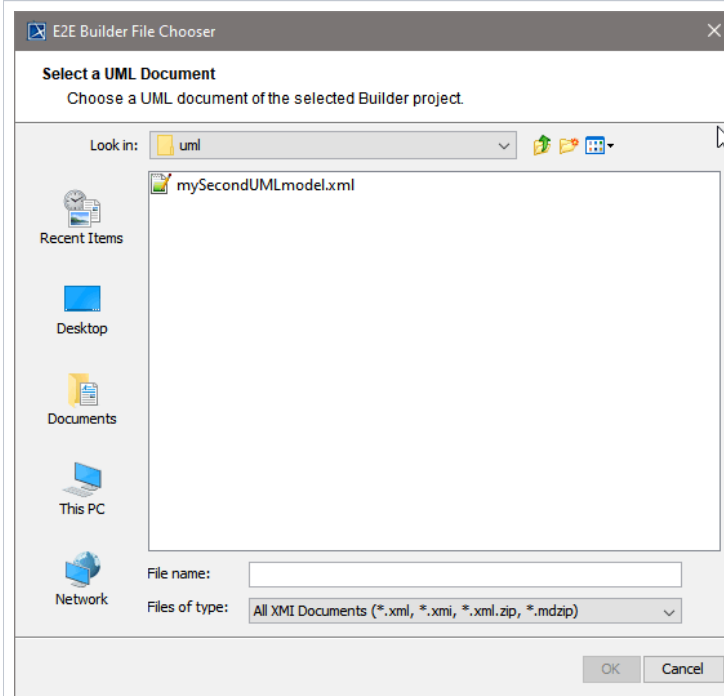


After the update of the Builder has been installed, you can open MagicDraw by using the shortcut on the desktop. As an alternative, you can also open it from the Windows Start Menu (**MagicDraw UML**).

The MagicDraw window will open as usual.



You can continue working on your recent projects by selecting **Builder > Reopen Builder Project**. The Builder Projects you have been working on before will be suggested.



If the XML file, which was saved last, exists in the selected Builder project, it will be opened after clicking **OK**. Otherwise, the dialog shown below will open, giving you the alternative to select another XML file of this Builder project.

You can now continue working with the UML model.