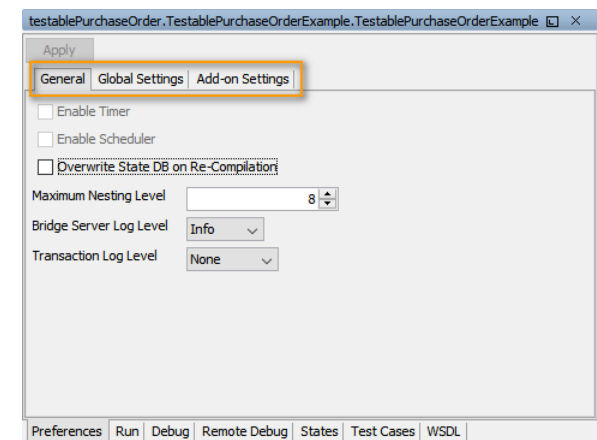


Changing the Service Preferences

The Preferences View consists of three tabs: **General**, **Global Settings** and **Add-on Settings**.



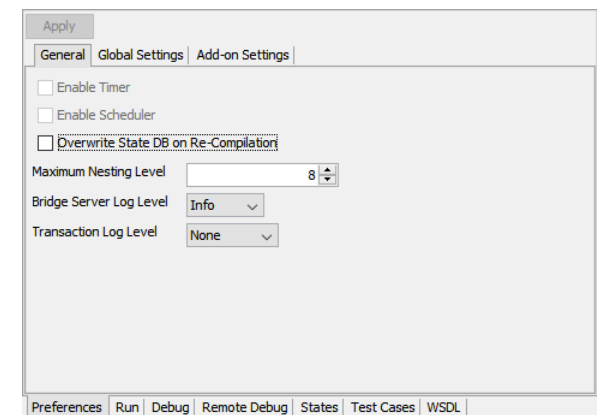
On this Page:

- [General Service Preferences](#)
- [Global Settings](#)
- [Add-on Settings](#)

Related Pages:

- [xUML Service Details](#)
- [xUML Service Settings](#)

General Service Preferences



The General Preferences tab allows to maintain the following settings:

Setting	Description
Enable Timer	Select this checkbox to enable or disable timer services that are part of the service. <div>This checkbox will only be enabled, if there is a timer service defined in the service.</div>
Enable Scheduler	Select this checkbox enable or disable scheduler services that are part of the service. <div>This checkbox will only be enabled, if there is a scheduler service defined in the service.</div>
Overwrite State DB on Re-Compilation	Select this checkbox to reset the persistent state database on each compilation.
Bridge Server Log Level	Use this drop-down list to adjust the bridgeserver log level. For more information on the bridgeserver log levels refer to xUML Service Standard Log .

Transaction Log Level	Use this drop-down list to adjust the transaction log level. For more information on the transaction log levels refer to xUML Service Transaction Log .
------------------------------	--

Click **Apply** to apply the settings to the service.

Global Settings

In this dialog, maintain the global settings of the xUML service as described in [xUML Service Settings](#). Apply changes by clicking **Apply**.

Running a service means deploying it to the Embedded xUML Runtime and starting it. As the global setting information is build up at deployment time, the global settings will only be available if the service has been run at least once.

The screenshot above is taken from E2E Education Lesson 3.

Add-on Settings

In this dialog, maintain the Add-on settings of the xUML service as described in [xUML Service Settings](#).