

Combo Box

The Combo Box element is able to display a list of options where the end user can choose an option from the list. Each option usually holds an id or code value and a corresponding human readable description text. Modeling a Combo Box needs a binding of these up to three variables.

Example File (Builder project Advanced Modeling/UI):



<your example path>\Advanced Modeling\UI\uml\ui.JavaScript.xml

On this Page:

- [Combo Box Bindings](#)

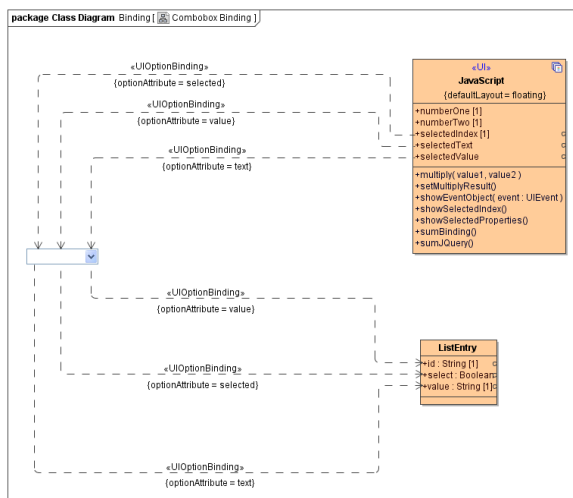
Related Pages:

Usage of the UI Widgets:

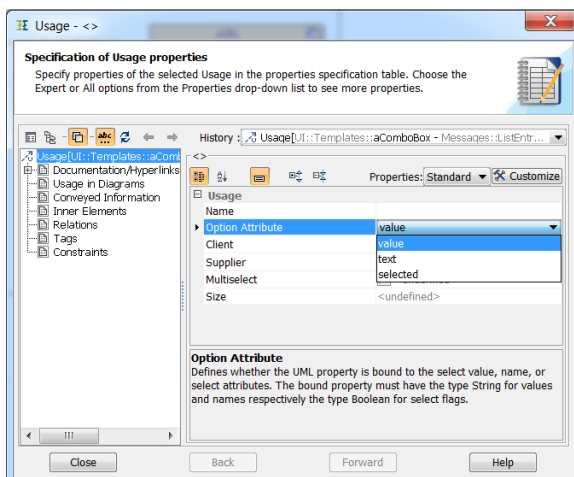
- [Autocomplete](#)
- [Checkbox](#)
- [Combo Box](#)
- [Date Chooser](#)
- [Multi-select Lists](#)
- [Radio Button Group](#)
- [Tables](#)
- [Tabs](#)

Combo Box Bindings

In this example we show bindings from a Combo Box to a `<<UI>>` controller and from a `ListEntry` message to the Combo Box. Of course, it is also possible to bind the other way round. In the controller binding the variables **selectedIndex**, **selectedText** and the **selectedValue** are bound to the Combo Box by drawing usage dependencies between the Combo Box and the controller attributes. For the message binding we do the same using the attributes of the `ListEntry` class:



The binding is configured using the `<<UIOptionBinding>>` stereotype:



This stereotype holds tagged values to define which property of the Combo Box should be set:

Option	Description
--------	-------------

value	The value holds the options non-visible value.
text	The text attribute holds the visible human readable text for descriptive purpose. This is also the default binding.
selected	Defines if a specific option from the options list is selected. Possible values are true or false.

If no stereotype is defined, the attribute value is bound to the text property of the Combo Box.