

# Troubleshooting Proxies

## Proxy Service Cannot be Started

Problem	Possible Reason	Solution
Deploying an xUML service with defined proxy server, the deployment error message <b>Could not start server!</b> is returned.	The port of the proxy service instance defined in the component diagram is used by another process.	Correct the port number accordingly and redeploy the xUML service.
The proxy start log in the file system (default: <b>&lt;your bridge data directory&gt;\proxies\logs\start.log</b> ) reads <b>Access denied</b> .	The user (possibly the domain user) that runs the Bridge has no permission to start the proxy.	Either assign the user to the local administrator group (not recommended) or grant permissions to allow starting services (e.g. for Windows as described here: <a href="#">How to Grant Users Rights to Manage Services (Start, Stop, Etc.)</a> ).
The proxy start log in the file system (default: <b>&lt;your bridge data directory&gt;\proxies\logs\start.log</b> ) reads  The E2E Proxies xxx service could not be started. A service specific error occurred: 1. More help is available by typing NET HELPMSG 3547.	Your proxy configuration is not compatible with the current Apache installation.  With Bridge 7, Apache has been updated to version 2.4. It may be that your proxy configuration is still based on the templates of Apache version 2.2.	Re-apply your modifications of the proxy configuration to the new templates. For more information refer to the <a href="#">Bridge 7 Migration Guide</a> .
The proxy start log in the file system (default: <b>&lt;your bridge data directory&gt;\proxies\logs\start.log</b> ) reads httpd (pid xxxx) already running  but no corresponding httpd process is running.	File <b>&lt;your bridge data&gt;\proxies\logs\httpd.pid</b> has not been automatically deleted, when the proxy has been stopped last time.	Remove the mentioned file <b>&lt;your bridge data&gt;\proxies\logs\httpd.pid</b> and start the proxy once again.
In the Windows event log it reads <b>Invalid address or port</b> .	You have deployed services that use <b>0</b> as proxy port. You can check this in file <b>&lt;your Bridge data directory&gt;\proxies\conf\httpd.conf</b> .	Delete the related services and redeploy them with a correct proxy port (or none).

### On this Page:

- [Proxy Service Cannot be Started](#)
- [Proxy Service Cannot be Stopped](#)
  - [Problem](#)
  - [Solution](#)
- [Proxy Entry Cannot Be Deleted](#)
  - [Problem](#)
  - [Solution](#)
- [Permission Denied when Starting the Proxy on Unix Systems](#)
  - [Problem](#)
  - [Reason](#)
  - [Solution](#)
- [Proxied Service Has Bad Response Time](#)
  - [Problem](#)
  - [Solution](#)
- [Proxy Certificate Problems](#)

## Proxy Service Cannot be Stopped

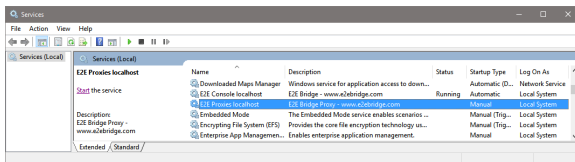
### Problem

When trying to stop the proxy service with the E2E Bridge, the proxy service keeps running.

### Solution

You can stop the proxy service manually as described below:

1. When a proxy service is running, you will find the entry **E2E Proxies** in the Services list of your Windows operating system. If the service is still running, stop it.



2. If the E2E Bridge still displays the proxy in status running, check the Windows Task Manager for Apache processes that are still running and stop them, too.
3. If the E2E Bridge displays the proxy in status running, but you are not able to stop the proxy, check if the proxy port is used by another program (e.g. Skype). Port conflicts as well as all used ports are listed in the **Ports** tab (see [xUML Service Ports](#)). Compare the used ports with the [Proxy Entries](#).

## Proxy Entry Cannot Be Deleted

### Problem

A proxy entry cannot be deleted for any reason.

### Solution

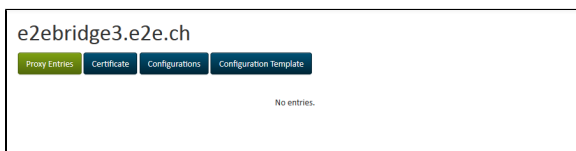
A proxy entry cannot be deleted without deleting the corresponding xUML service it is connected to (see also [Deleting a Proxy Entry](#)). For example, the node instance, to which the xUML service has been deployed, has been disposed, and the proxy deployed to a dedicated node instance is still running. You need to remove the proxy entry manually as described below (Windows platforms).

Now, remove the proxy entries manually as described in the following steps:

1. Stop the proxy service via the E2E Bridge (see [Starting and Stopping Proxy Services](#)).
2. Remove file proxies.xml, which resides in the data directory of the Bridge installation (default: **<your bridge data directory>\proxies**).

Note, that all proxy nodes and proxy entries will be removed, if you delete **proxies.xml**. If you wanted to remove only some proxy entries, you would have to edit the file.

3. In the Bridge, select the proxy node instance. Check that there is no proxy service entry anymore.



4. If you didn't remove all proxy entries, restart the proxy service (see [Starting and Stopping Proxy Services](#)).

Now, the deleted proxy entry is not visible anymore (see step 3). However, the Apache still runs with the old configuration. The Apache configuration only will be changed next time you deploy an xUML service using proxies.

## Permission Denied when Starting the Proxy on Unix Systems

### Problem

The problem only concerns Linux systems: When starting the proxy server via the Bridge, the error message **Could not start server!** is displayed.

Examining the proxy startup log file (**<your bridge data directory>\proxies\logs\start.log**), the following error message can be found:

```
(13)Permission denied: make_sock: could not bind to address 0.0.0.0:885
no listening sockets available, shutting down
Unable to open logs
```

## Reason

If E2E Bridge has not been installed with the root user and a low port number for the proxy service (< 1025) has been used, the permission for starting up the Bridge will be denied due to the system's security policy.

## Solution

Either re-deploy the proxy service with a higher port number, or allow starting a proxy for ports below 1025 for the Bridge user as described in [Changing the Proxy Service Preferences](#).

# Proxied Service Has Bad Response Time

## Problem

This issue concerns Bridges with xUML Runtime version lower than 2018.5.

Transaction log shows a good response time (`SERVICE_EXIT`). If detailed logging is enabled in **httpd.conf** to display also time, the situation changes.

This is a IPv6/IPv4 problem: By default, Apache tries to proxy to IPv6 addresses and (after some timeout) tries on IPv4. This can slow down services severely, if IPv6 is enabled.

## Solution

As of Runtime 2018.5 the E2E Bridge supports IPv6.

If a Runtime update is not possible, you can workaround this problem by adding the IPv4 to your **hosts** file on the system the Bridge is running on:

- Windows: C:\Windows\System32\drivers\etc\hosts
- Linux: etc/hosts

# Proxy Certificate Problems

Problem	Possible Reason	Solution
Proxy certificate expired.	The self-signed Bridge proxy certificate has expired.	Create a new self-signed certificate as described on <a href="#">Renewing the Self-signed Proxy Certificate</a> .
	You have renewed the self-signed proxy certificate but did not restart the proxy service to apply it.	Restart the proxy service as described on <a href="#">Starting and Stopping the Proxy Service</a> .