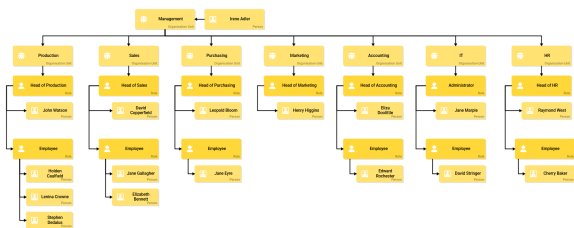


# The Processes of ACME Corp

The functionalities of **Scheer PAS BPaaS** are described in the online documentation and explained in more detail using concrete examples. There are many step-by-step instructions to help users model business processes and create executable business apps.

## ACME Corp.

ACME Corp. serves as an example company: Managing director **Irene Adler** has decided to use the **Scheer Process Automation Suite** in her company. She wants to digitize the company's business processes with the BPaaS digitization module. To familiarize herself with modeling, **Irene** first creates an **organization chart** of ACME Corp.:



The departments of ACME Corp. are created as **organizational units**:

- **Management**
- **Production**
- **Sales**
- **Purchasing**
- **Marketing**
- **Accounting**
- **IT**
- **HR**

The organization chart not only shows the departments with their hierarchies. Each **person** is also already assigned a **role**. The roles are later reused in process modeling.

## The Processes of ACME Corp.

**Irene Adler** wants to use BPaaS to digitize the business processes of various departments in her company:

- With the **Bidding** app customer inquiries are managed. Offers can be created faster and new customers can be added directly to the customer database.
- The **Procurement** app enables all employees to order required office supplies quickly and easily via a business app. An approval process ensures that cost-intensive orders are checked in advance.
- **Irene Adler** trusts in the innovative ideas of her employees and provides them with the app **Idea Management** a possibility to report improvement suggestions and optimization potential to the management.
- The start of new employees is supported by the **Onboarding** app. This ensures that all necessary preparations are made when the new colleague joins the company. This minimizes the time spent on administrative and logistical tasks.
- The employees of ACME Corp. travel a lot. **Irene Adler** wants therefore to enable her employees to report damage to vehicles directly from the road. **Irene Adler** therefore creates the **Damage Reporting Process** in **Scheer PAS Mobile** and provides her employees with the app for their mobile devices.

On the following pages these sample processes are explained individually. For each process you will find an overview of the complete EPC model, illustrations of the individual sub-processes, detailed process descriptions and illustrations of all forms used in the respective process.

### On this Page:

- [ACME Corp.](#)
- [The Processes of ACME Corp.](#)

### Related Pages:

- [EPC Elements](#)
  - [Organization Model](#)
  - [Organization Unit](#)
  - [Person](#)
  - [Role](#)

### Related Documentation:

- [MOBILE](#) (German)